



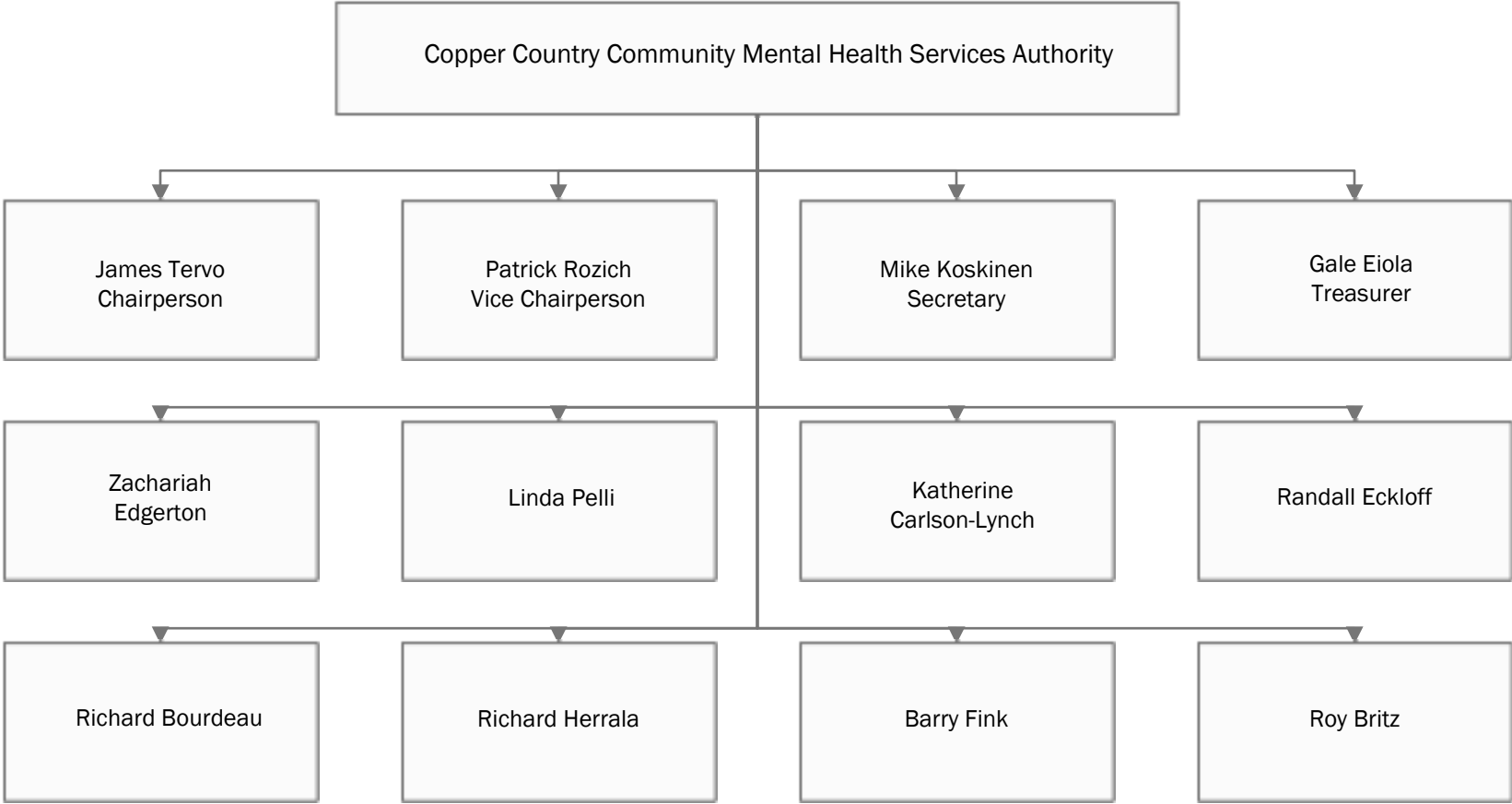
Organizational Chart

It is the mission of the Copper Country Mental Health Services Board to ensure that appropriate, cost-efficient, and quality behavioral health services are accessible to eligible persons in Baraga, Houghton, Keweenaw, and Ontonagon counties. Copper Country Mental Health Services provides an array of services intended to increase independence, improve quality of life, and support community integration and inclusion of the persons served.

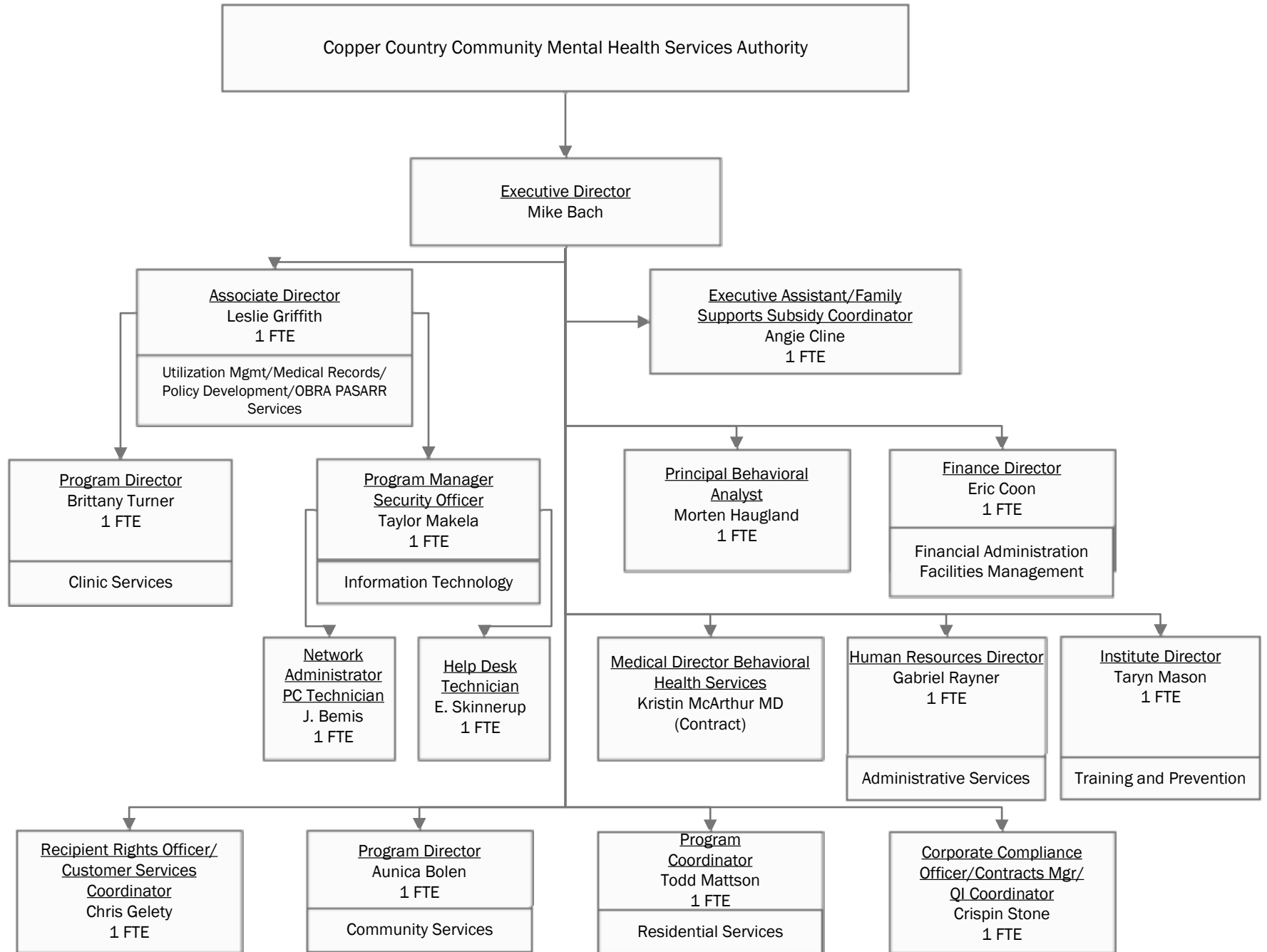
TABLE OF CONTENTS

Board of Directors	3
Management Structure	4
Recipient Rights/Customer Services	5
Behavioral Services	6
Financial Administration/Maintenance/IT	7
Administrative Services	8
Residential Services	9
Community Services I	10
Community Services II	11
Clinic Services	12
The Institute	13
Psychiatric Services	14

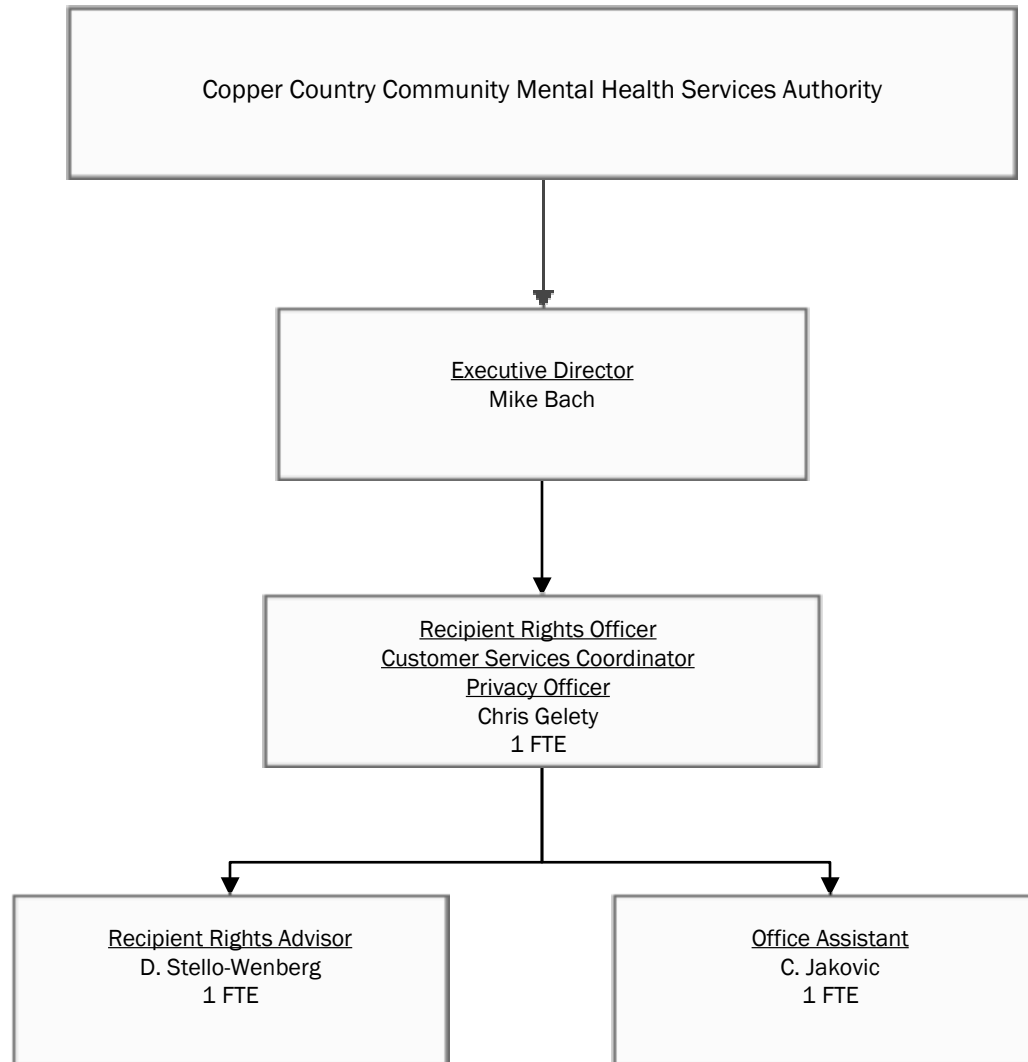
Board Structure



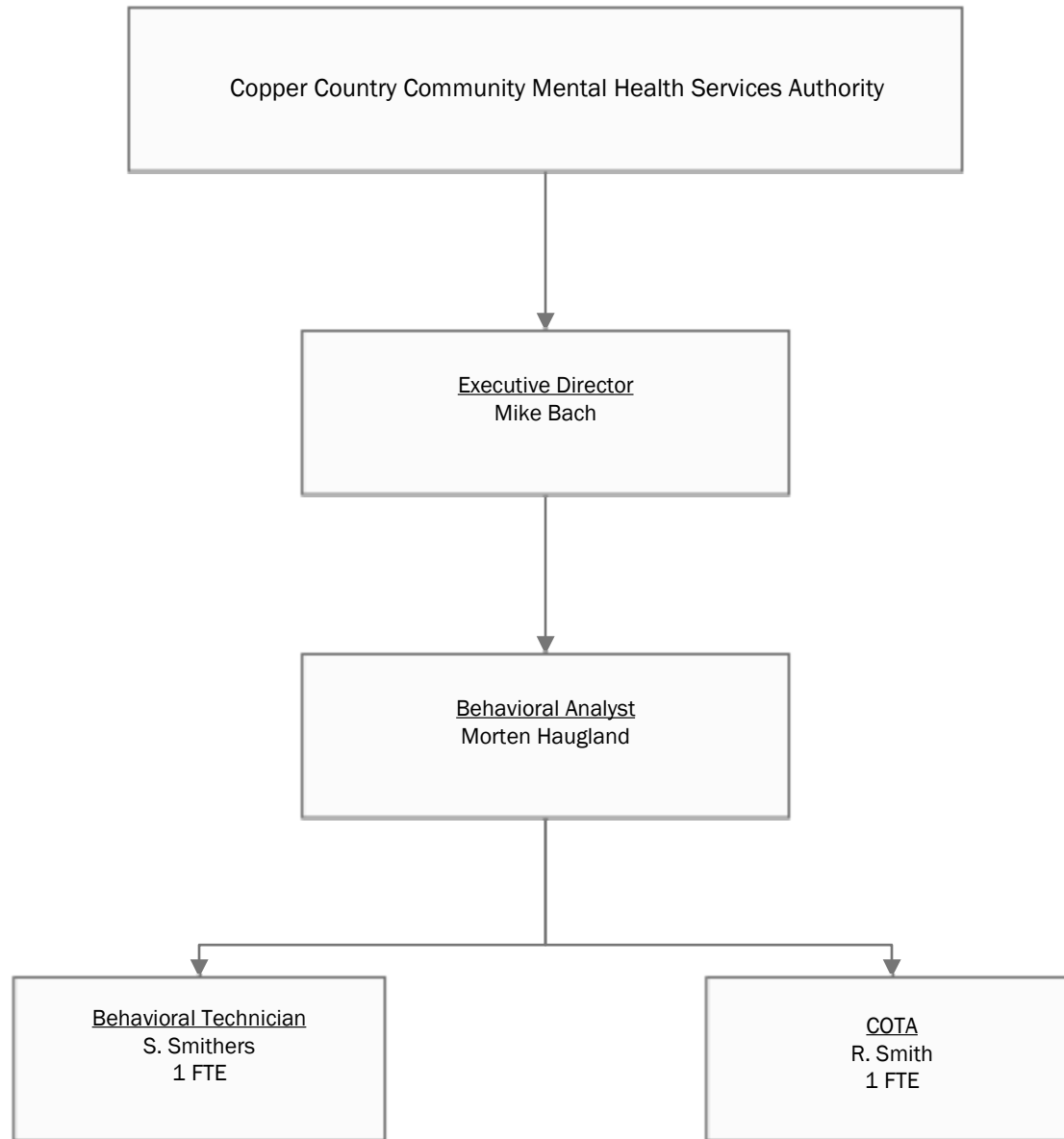
Management Structure



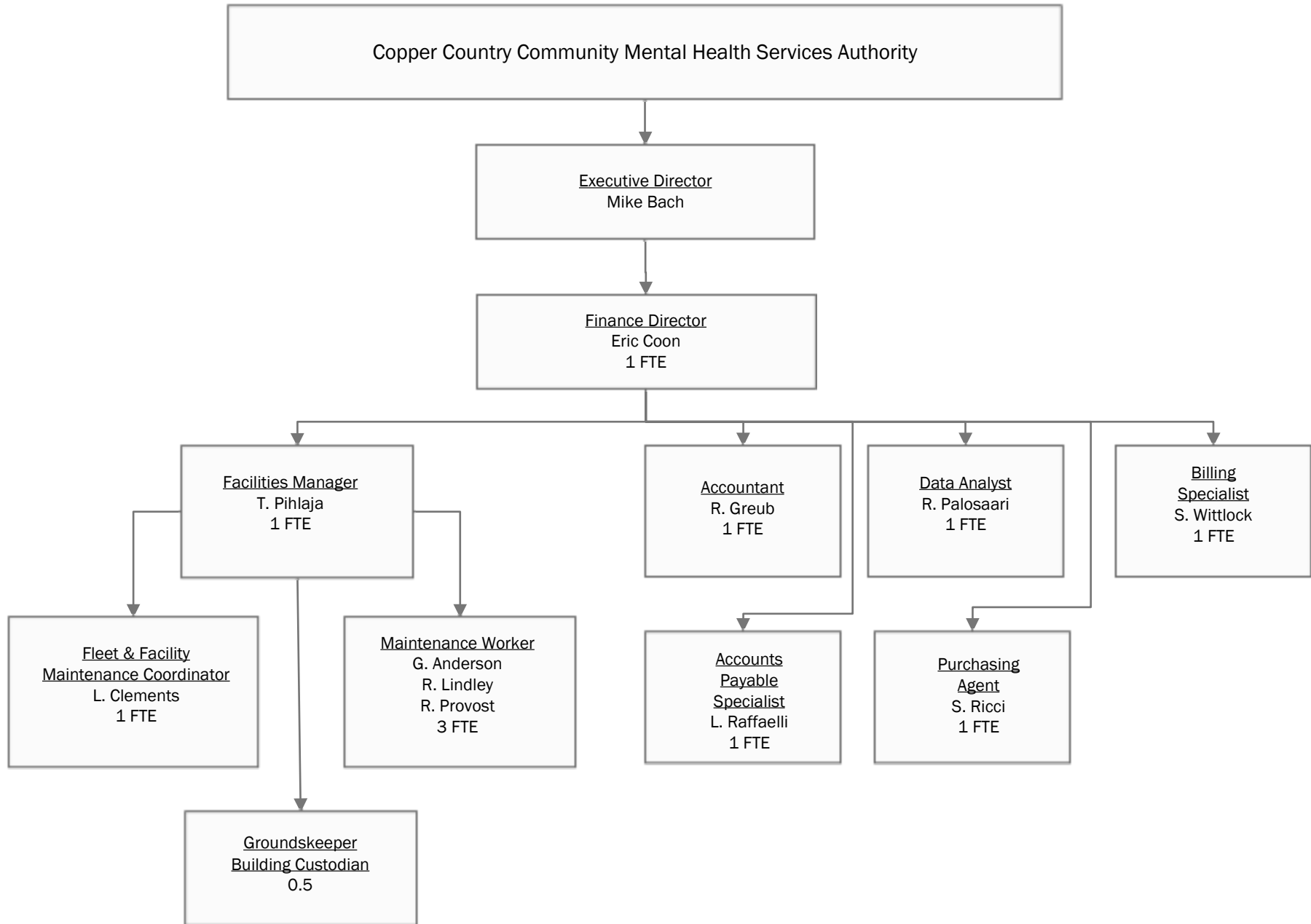
Recipient Rights/Customer Service



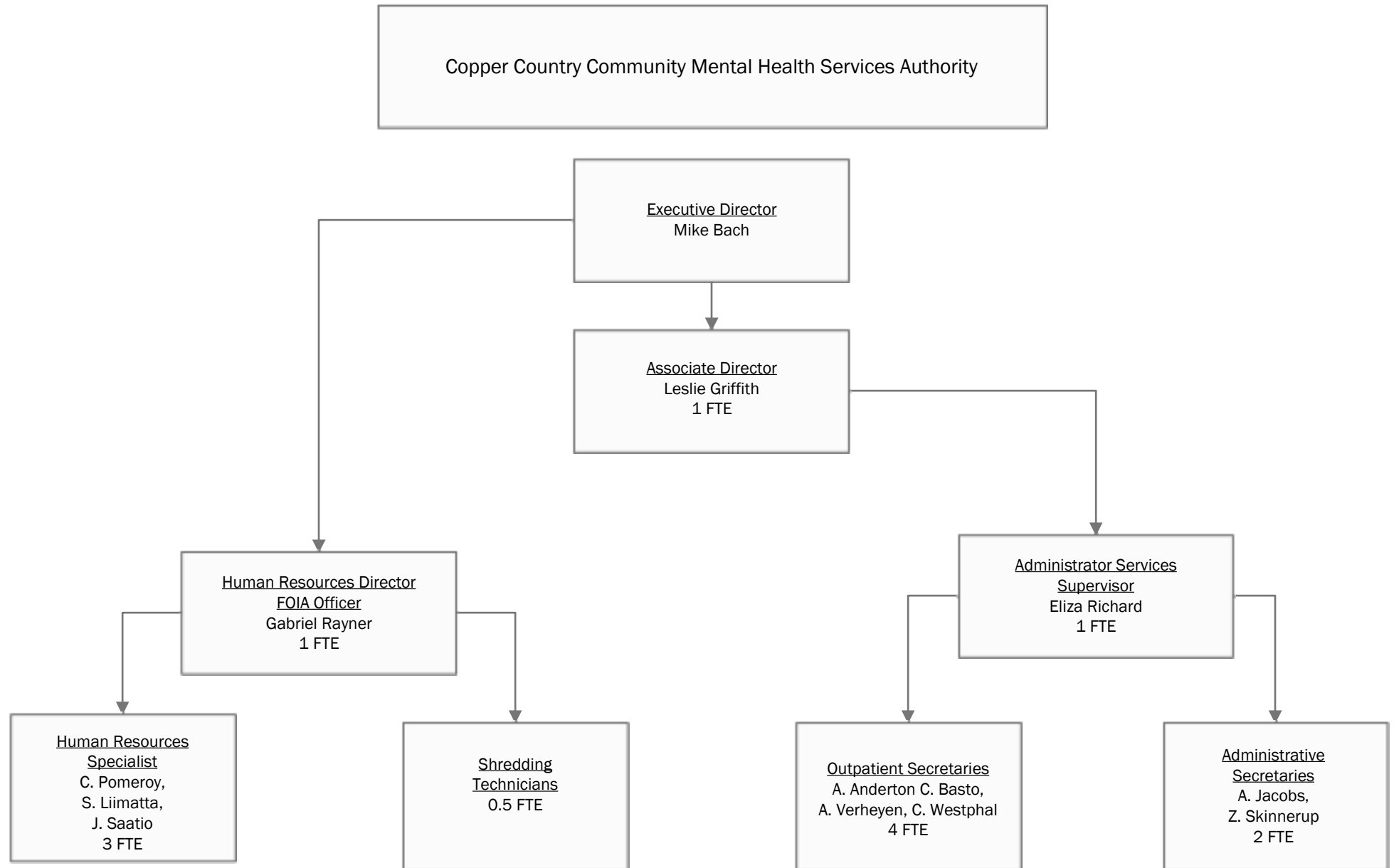
Behavioral Services



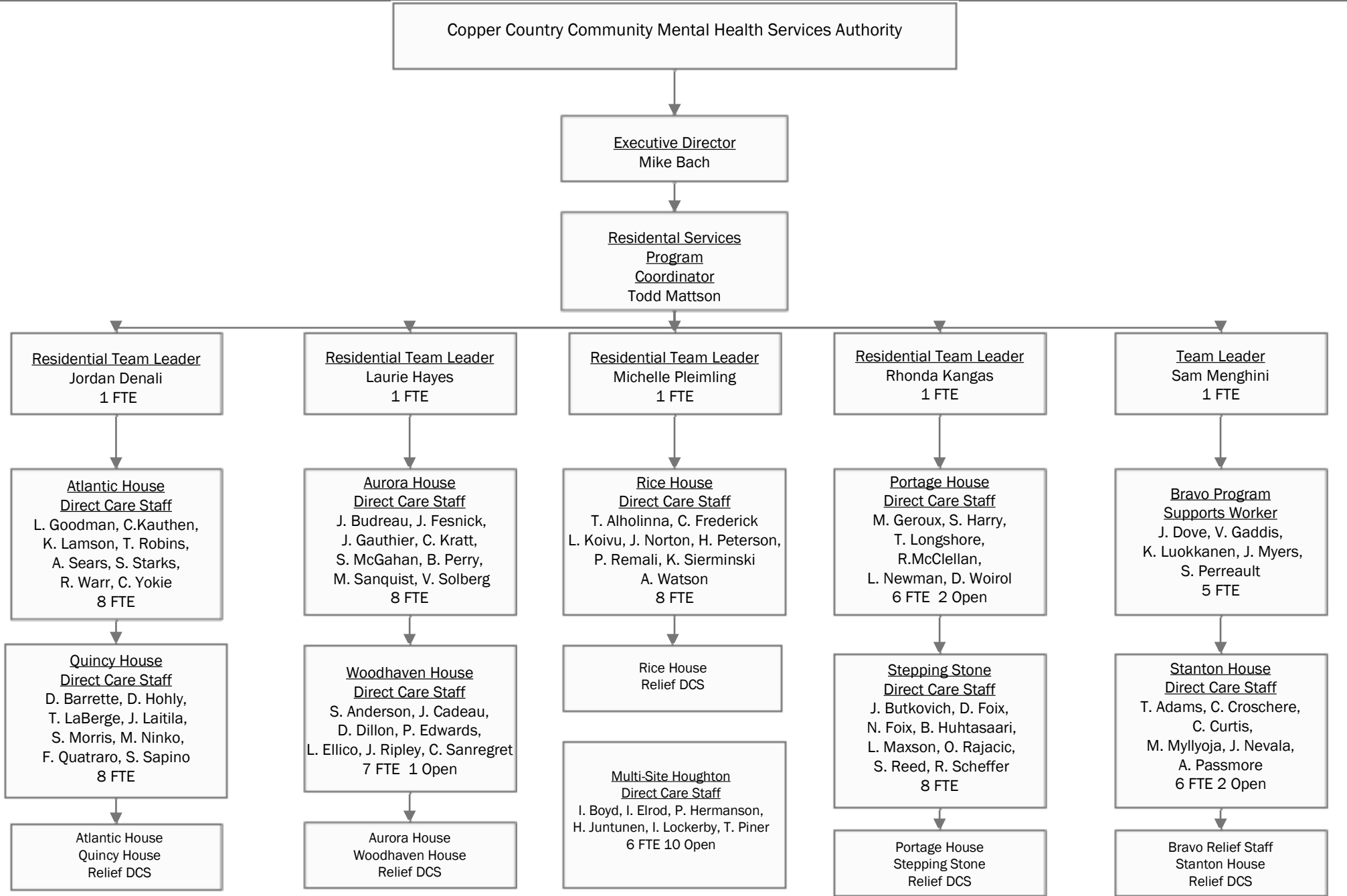
Financial Administration/Maintenance



Administrative Services



Residential Services

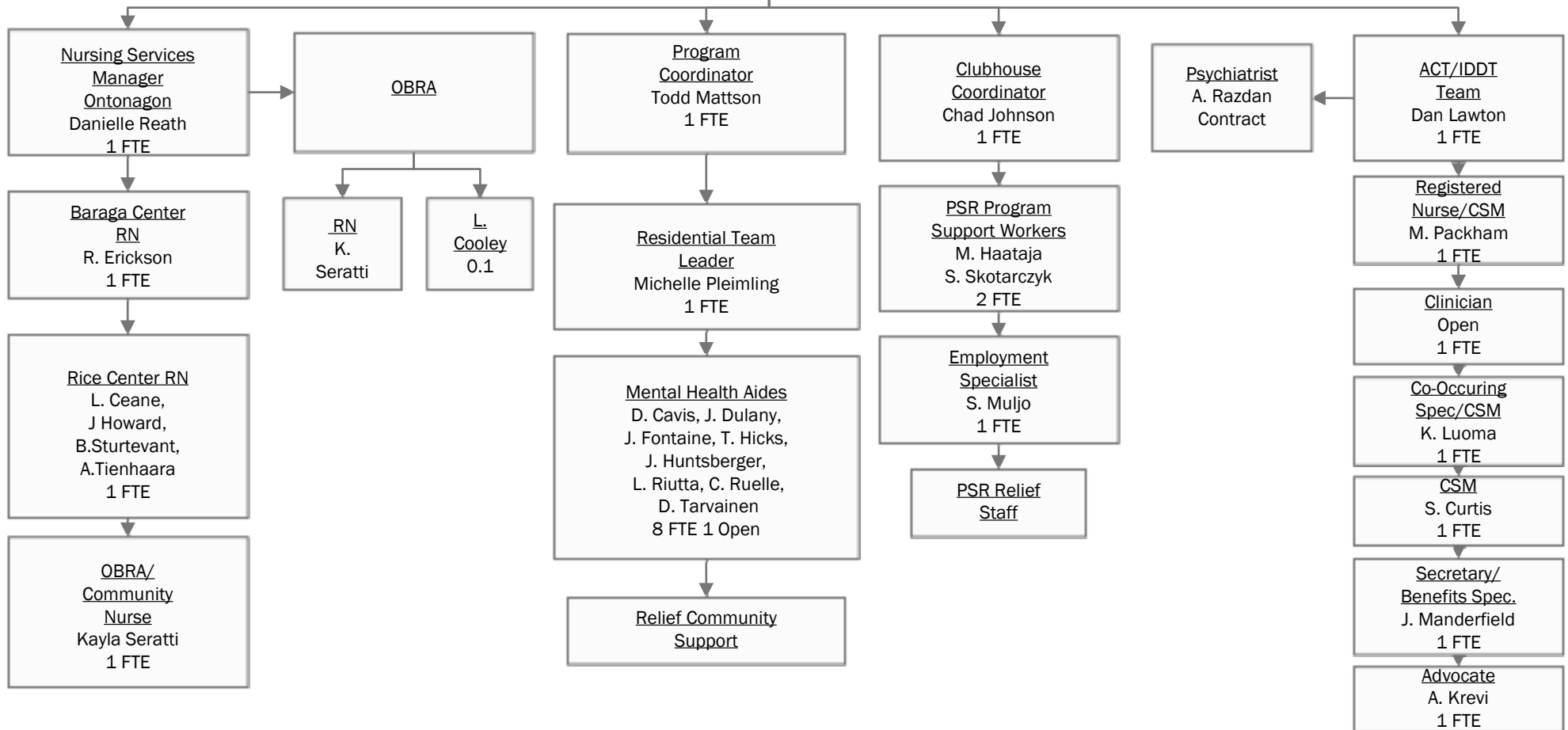


Community Services I

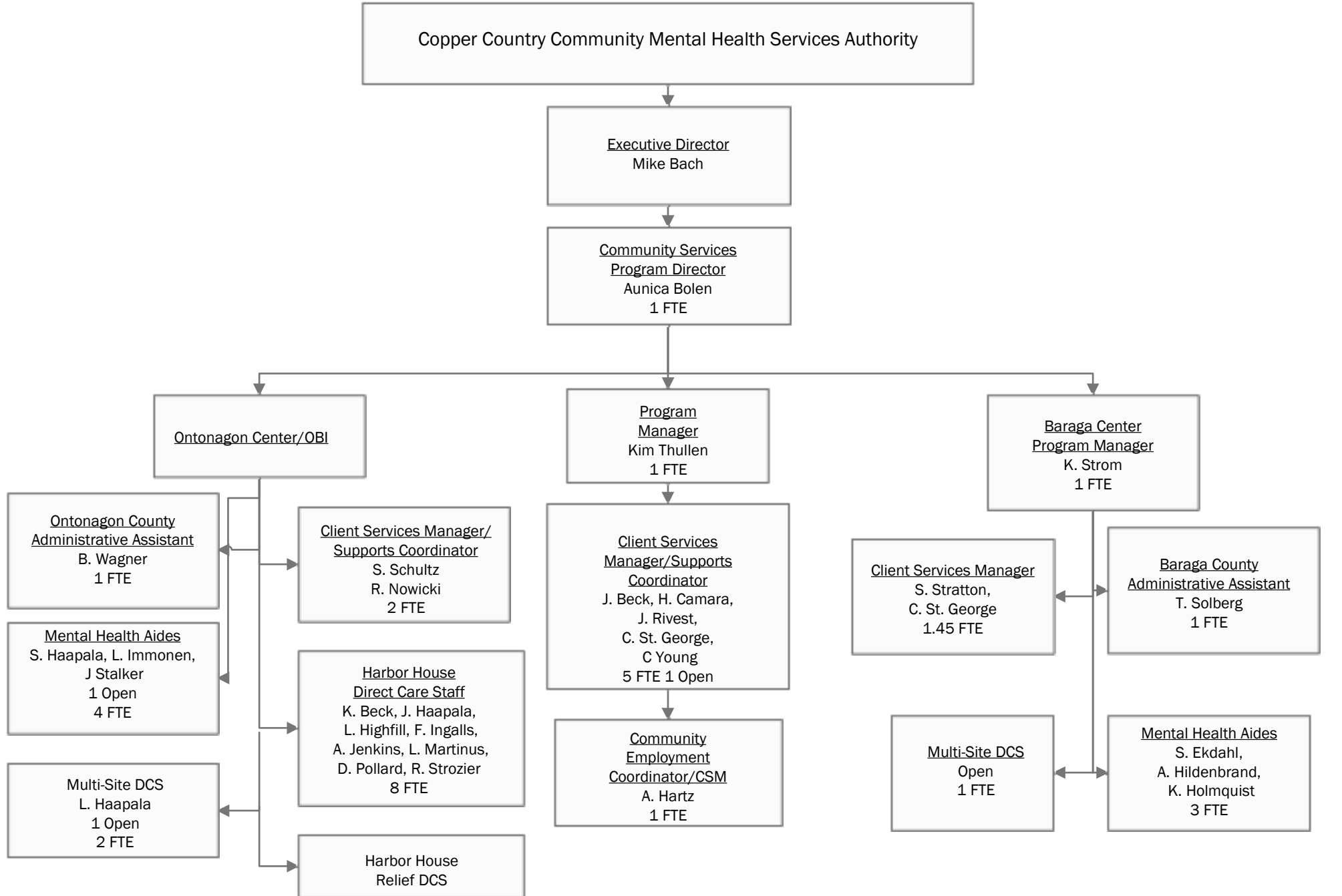
Copper Country Community Mental Health Services Authority

Executive Director
Mike Bach

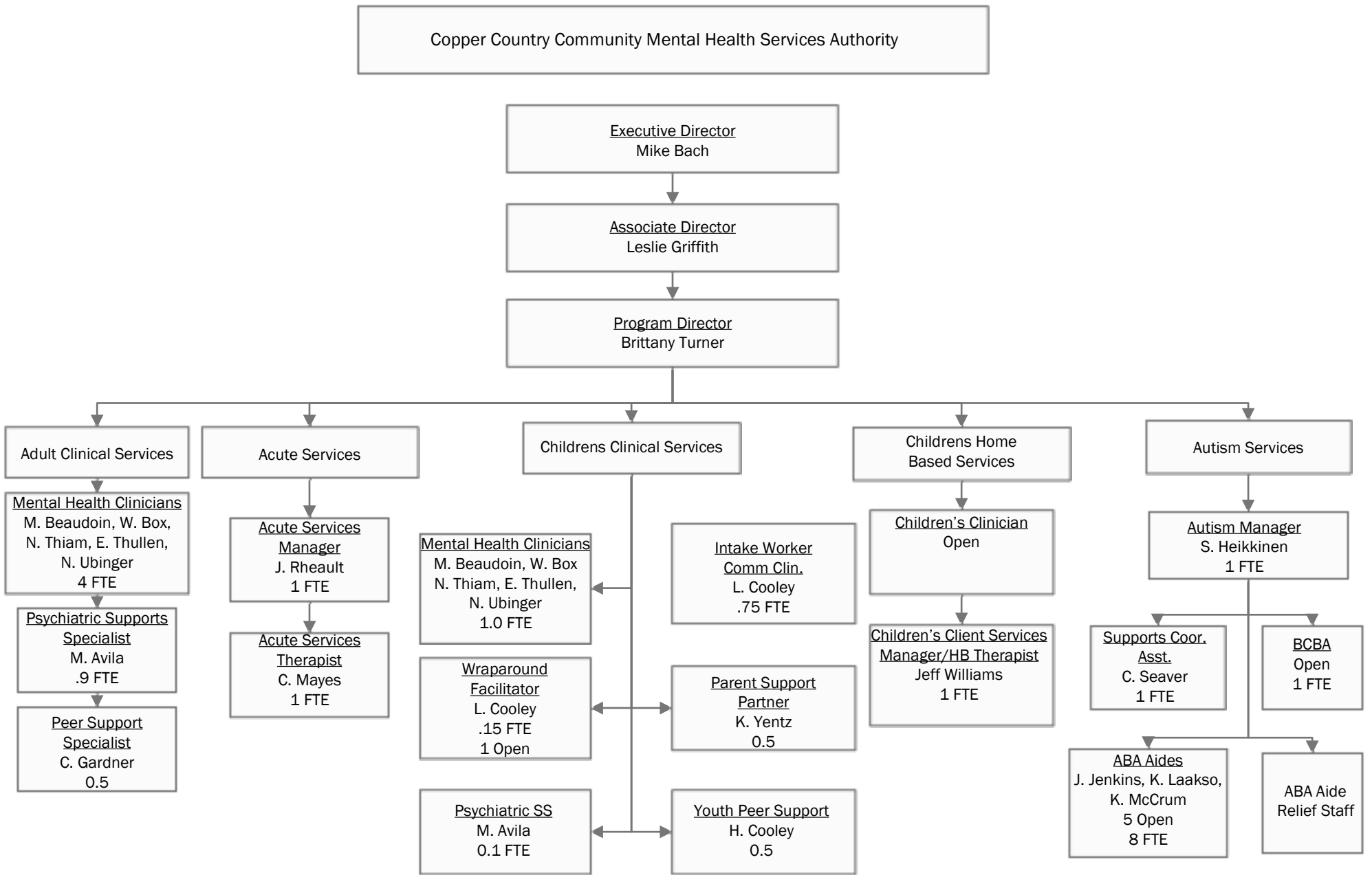
Associate Director
Leslie Griffith



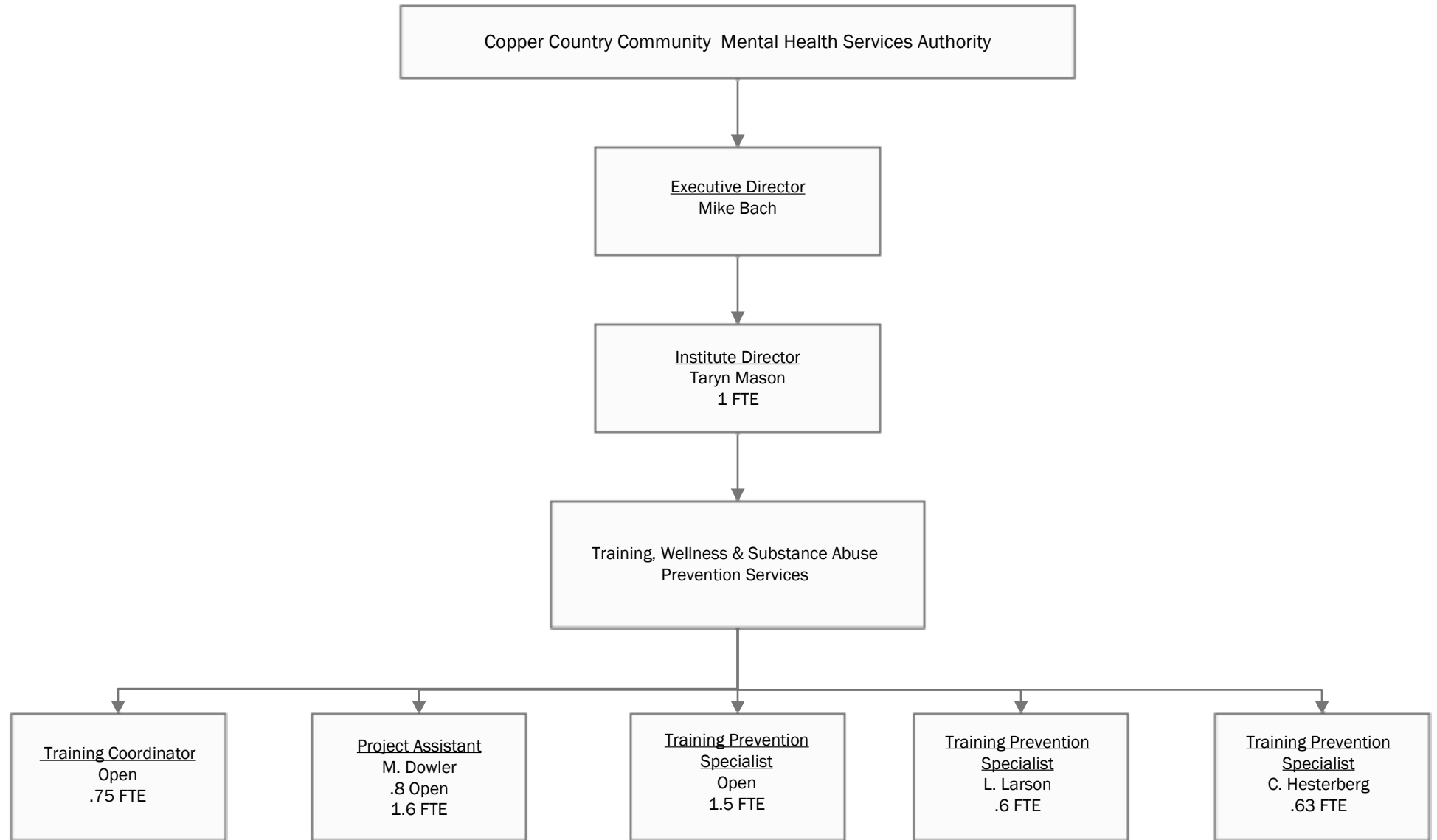
Community Services II



Clinic Services



The Institute



Psychiatric Services

