



# **Organizational Chart**

**June 2022**

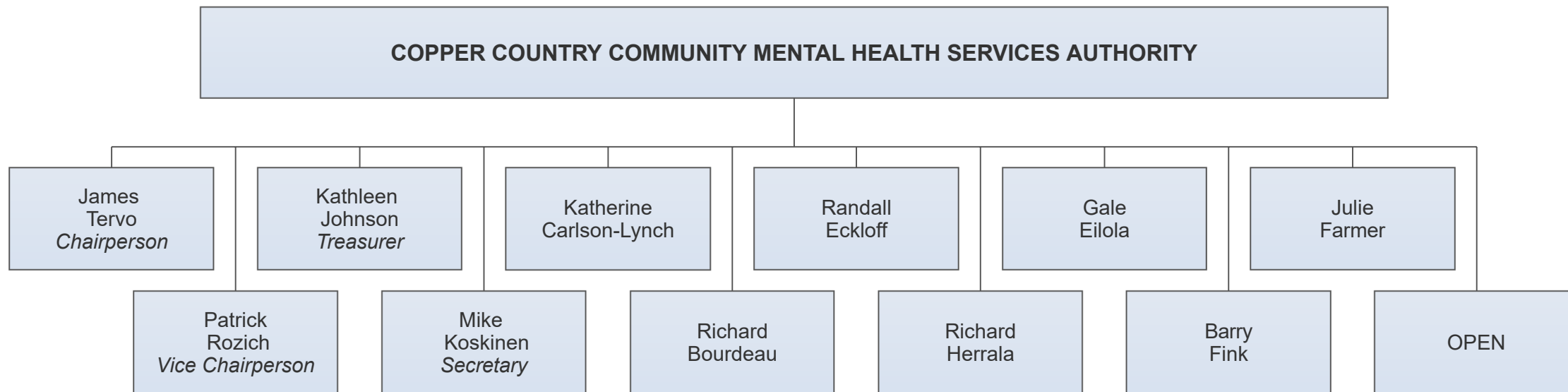
**It is the mission of the Copper Country Mental Health Services Board to ensure that appropriate, cost-efficient, and quality behavioral health services are accessible to eligible persons in Baraga, Houghton, Keweenaw and Ontonagon counties. Copper Country Mental Health Services provides an array of services intended to increase independence, improve quality of life, and support community integration and inclusion of the persons served.**

# CCMHSA ORGANIZATIONAL CHART TABLE OF CONTENTS

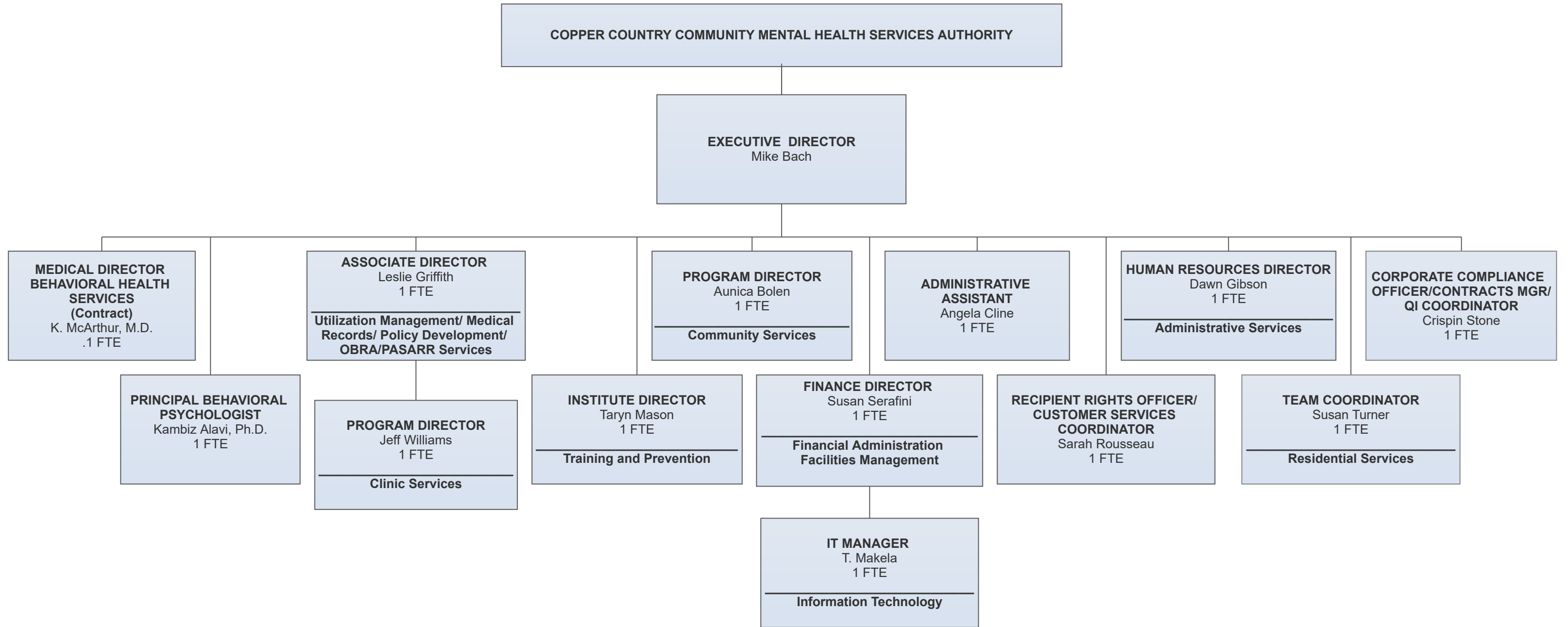
BOARD STRUCTURE .....	3
MANAGEMENT STRUCTURE .....	4
RECIPIENT RIGHTS/CUSTOMER SERVICE .....	5
BEHAVIORAL SERVICES .....	6
FINANCIAL ADMIN/MAINTENANCE/IT .....	7
ADMINISTRATIVE SERVICES .....	8
RESIDENTIAL SERVICES .....	9
COMMUNITY SERVICES I .....	10
COMMUNITY SERVICES II .....	11
CLINIC SERVICES .....	12
THE INSTITUTE .....	13
PSYCHIATRIC SERVICES .....	14

# CCCMHSA ORGANIZATIONAL CHART - JUNE 2022

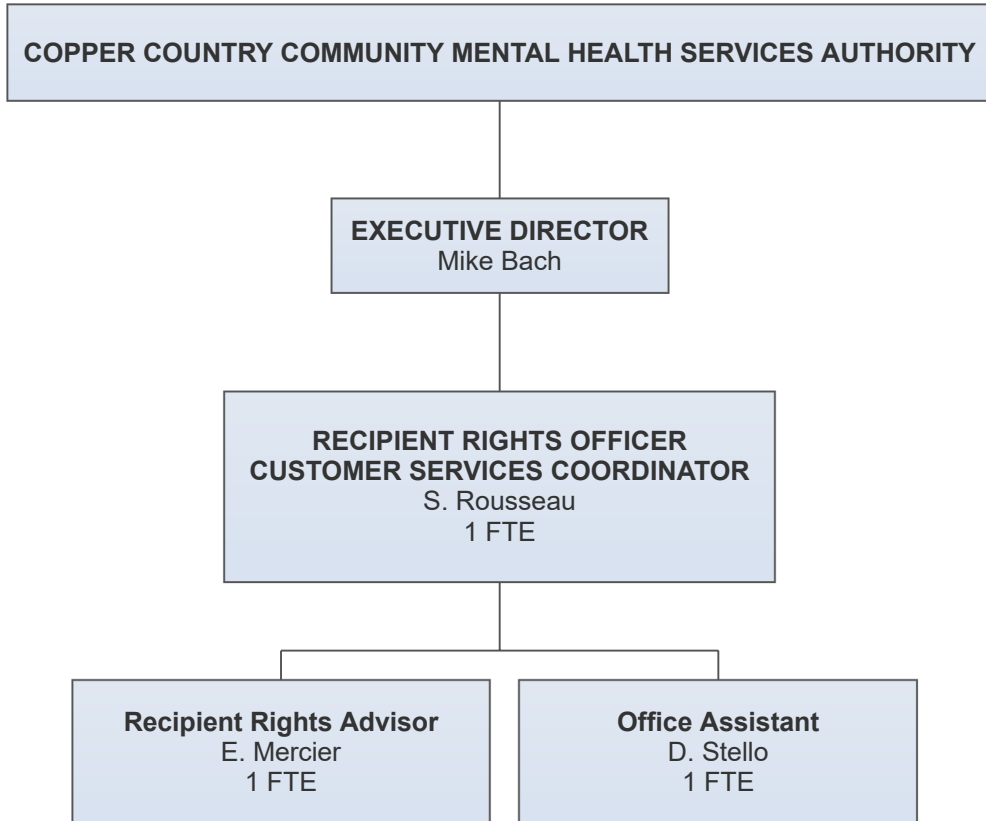
## BOARD STRUCTURE



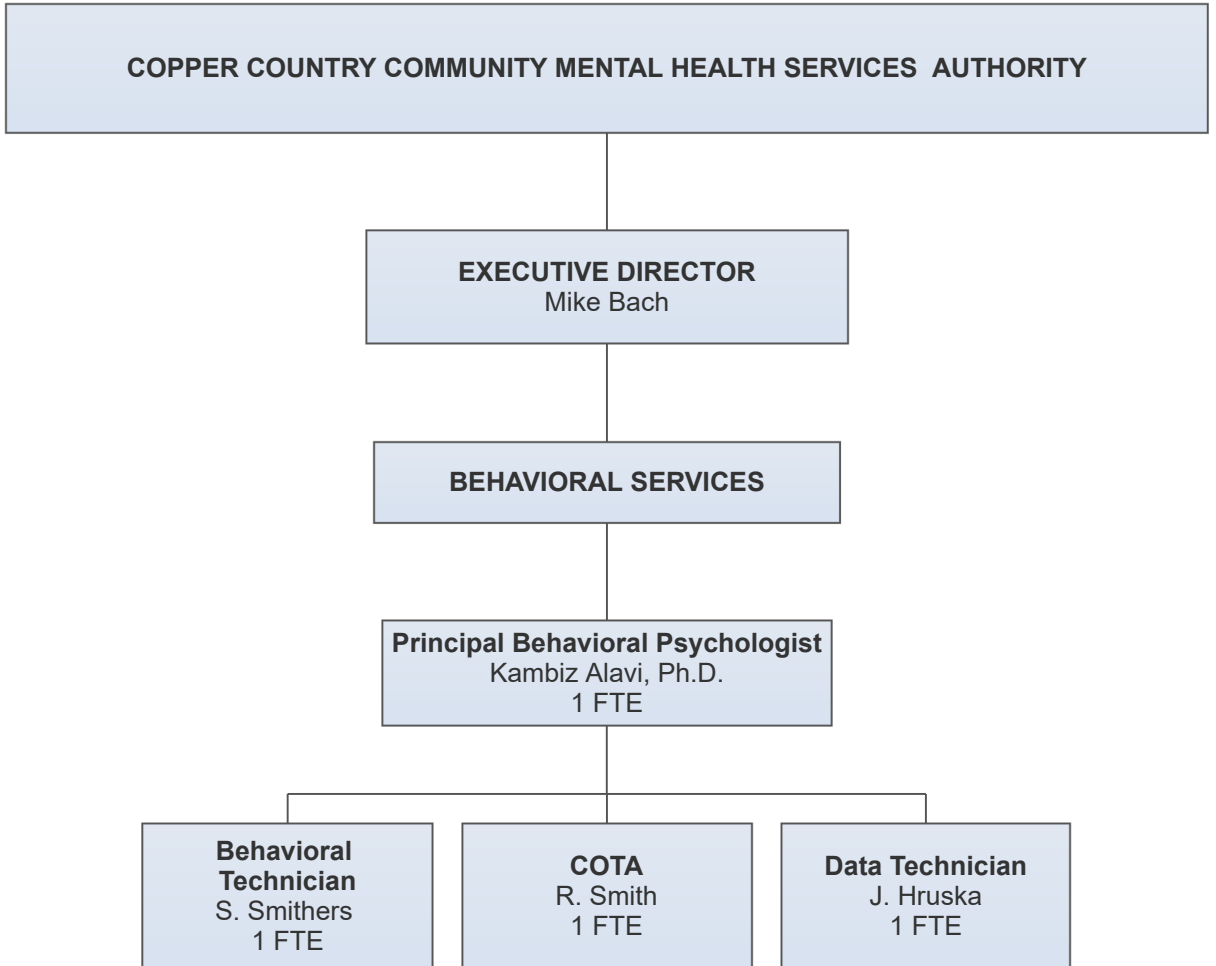
# CCCMHSA ORGANIZATIONAL CHART - JUNE 2022 MANAGEMENT STRUCTURE



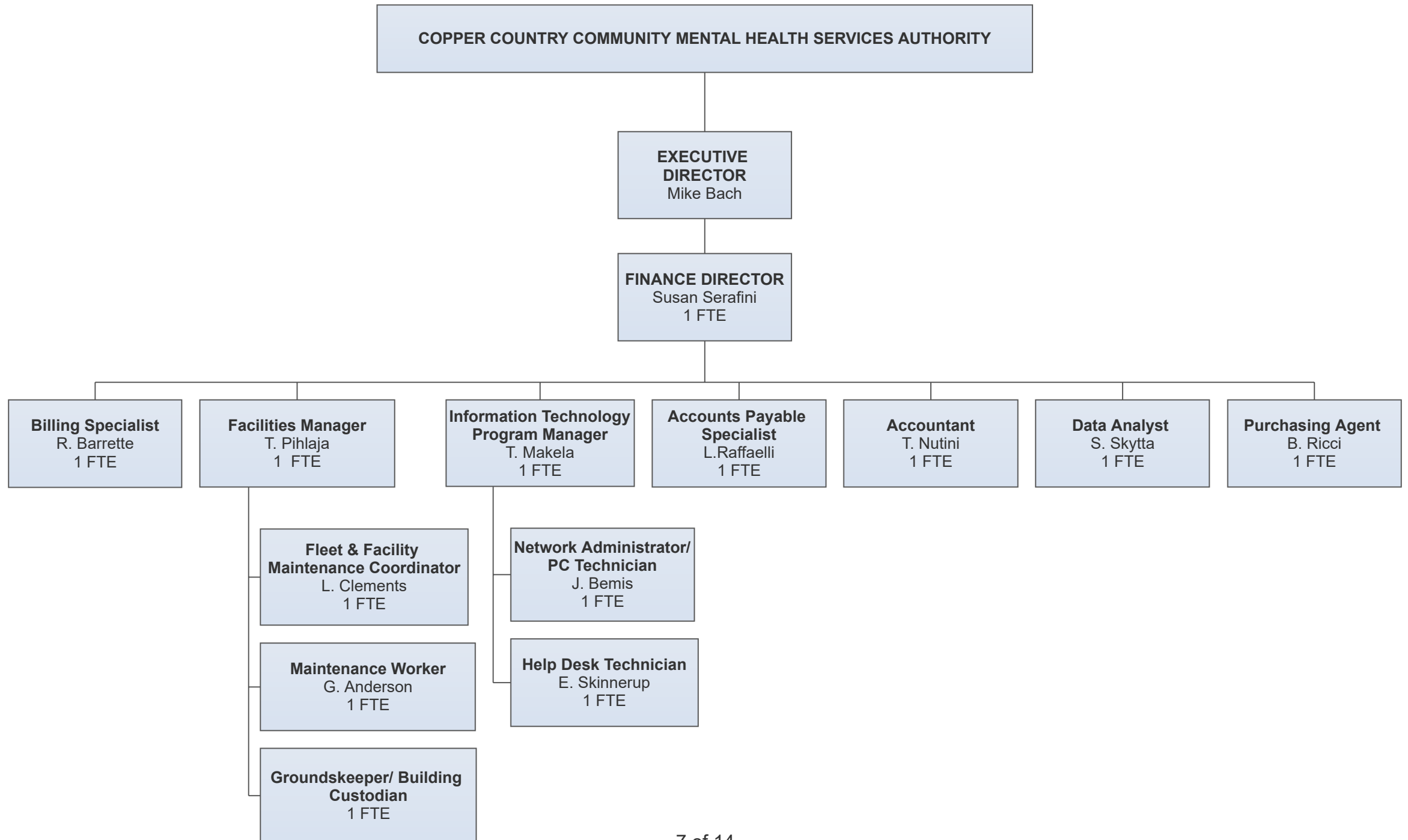
**CCCMHSA ORGANIZATIONAL CHART - JUNE 2022  
RECIPIENT RIGHTS/CUSTOMER SERVICE**



**CCCMHSA ORGANIZATIONAL CHART- JUNE 2022  
BEHAVIORAL SERVICES**

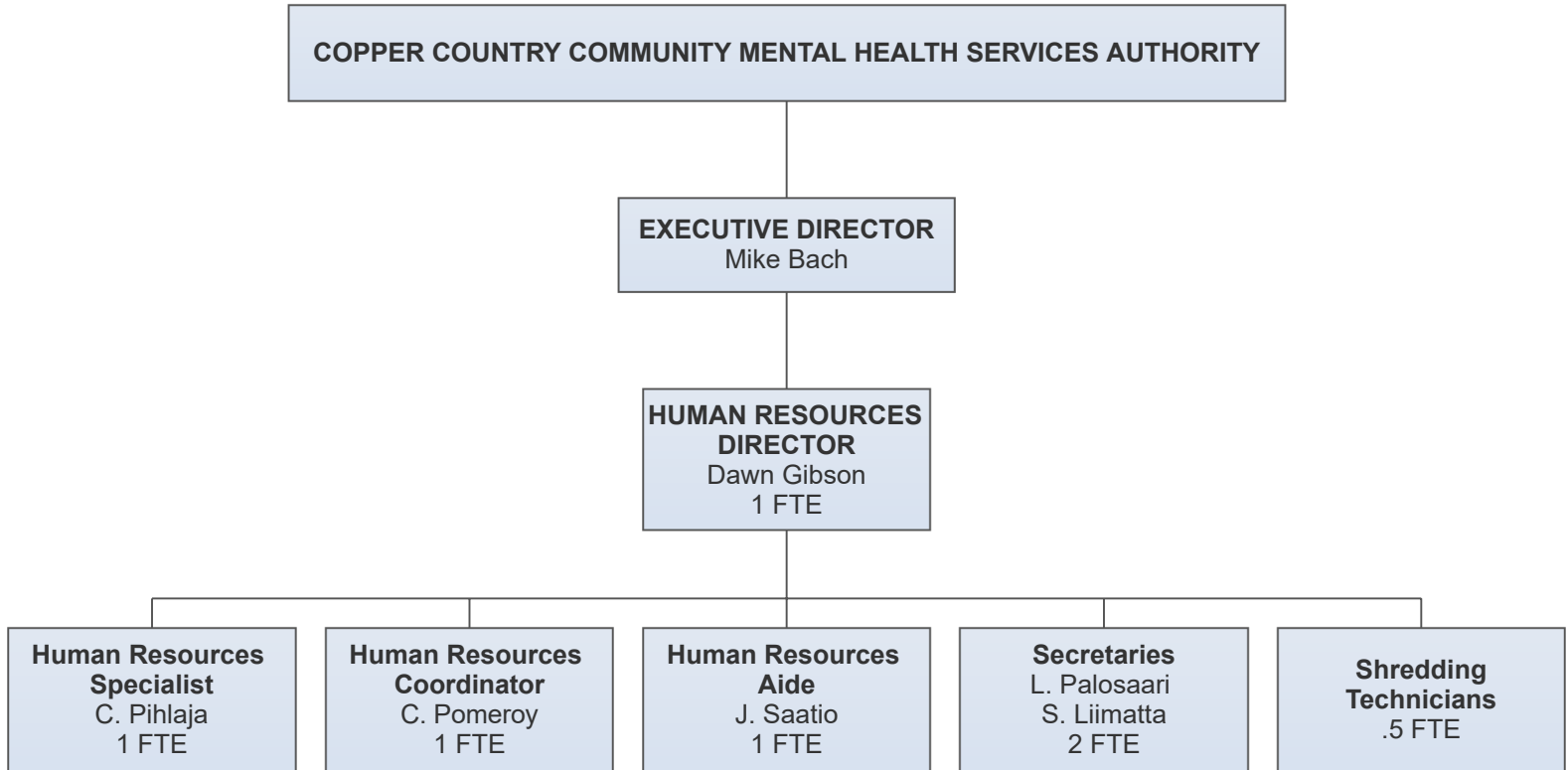


**CCCMHSA ORGANIZATIONAL CHART - JUNE 2022**  
**FINANCIAL ADMINISTRATION/ MAINTENANCE/ INFORMATION TECHNOLOGY**



# CCCMHSA ORGANIZATIONAL CHART - JUNE 2022

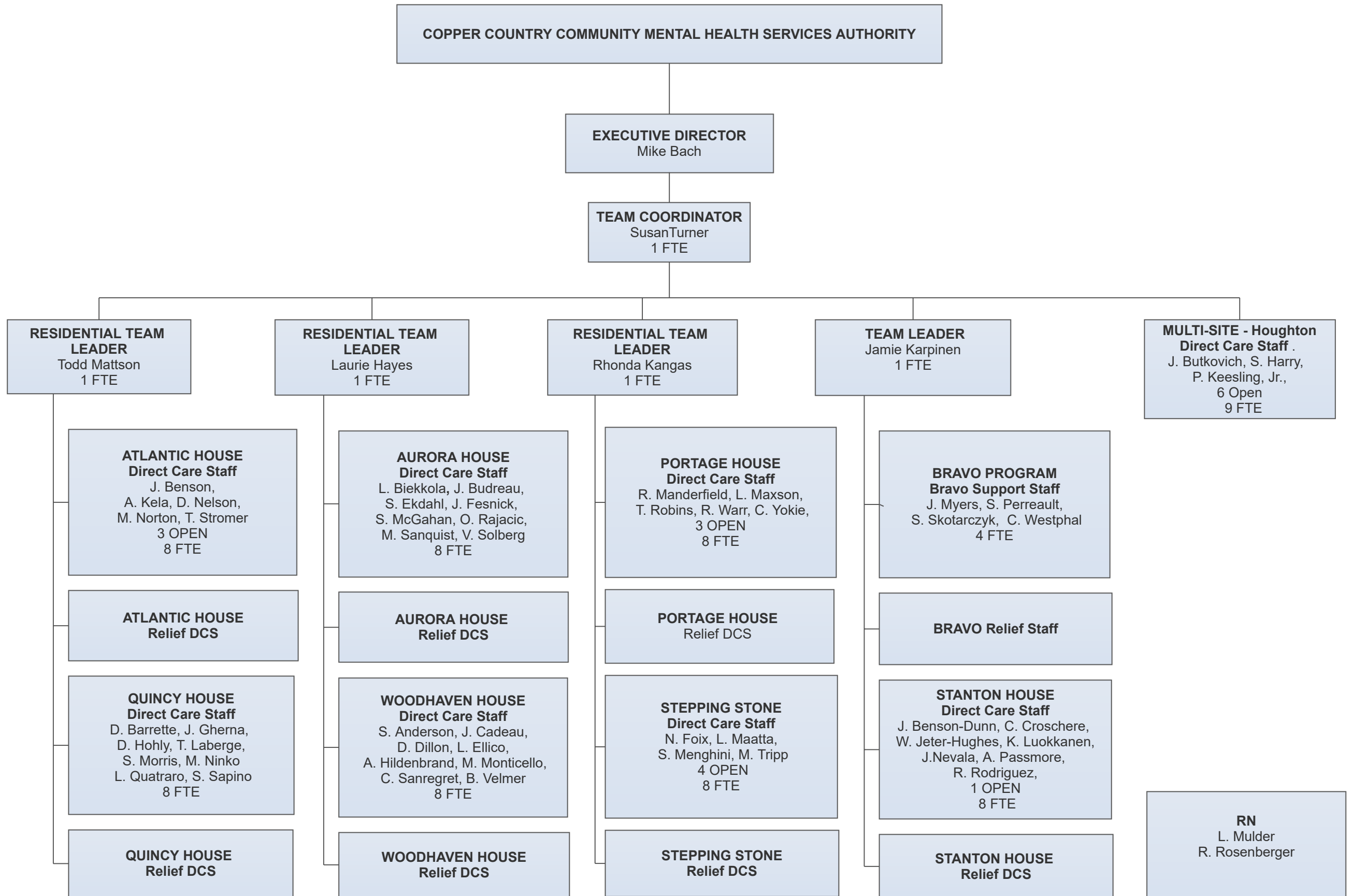
## ADMINISTRATIVE SERVICES





# CCCMHSA ORGANIZATIONAL CHART - JUNE 2022

## RESIDENTIAL SERVICES



# CCCMHSA ORGANIZATIONAL CHART - JUNE 2022

## COMMUNITY SERVICES I

**COPPER COUNTRY COMMUNITY MENTAL HEALTH SERVICES AUTHORITY**

**EXECUTIVE DIRECTOR**  
Mike Bach

**ASSOCIATE DIRECTOR**  
Leslie Griffith  
1 FTE

**PROGRAM MANAGER**  
Jamie Rheault  
1 FTE

**ADMINISTRATIVE COORDINATOR**  
Eliza Richard  
1 FTE

**NURSING SERVICES MANAGER**  
Danielle Reath (Ontonagon)  
1 FTE

**CLUBHOUSE COORDINATOR**  
Chad Johnson  
1 FTE

**ACT/ IDDT TEAM COORDINATOR**  
1 Open  
1 FTE

**OBRA/PSARR SERVICES**

**Client Services Manager/ Supports Coordinator**  
J. Rivest  
1 Open  
2 FTE

**Mental Health Aides**  
D. Cavis, J. Fontaine,  
B. Huhtasaari, J. Huntsberger,  
L. Riutta, C.Ruelle,  
D. Tarvainen, D. Williamson  
1 Open  
9 FTE

**Relief Community Support**

**Community Employment Coordinator/CSM**  
1 Open  
1 FTE

**RICE HOUSE Residential Team Leader**  
Michelle Pleimling

**RICE HOUSE - Direct Care Staff**  
T. Alholinna, J.Berryman, M. Hillstrom,  
M Joyal, L. Koivu, H. Peterson,  
P. Remali, C. Stromer, M. Yokie  
3 Open  
12 FTE

**RICE HOUSE Relief DCS**  
2 FTE

**Registered Nurses**  
K. Bosen (Baraga)  
L. Ceane (Rice Center)  
L. Mulder (Rice Center)  
R. Rosenberger (Rice Center)  
1 Open  
5 FTE

**RN**  
L. Ceane

**PSR Program Support Workers**  
V. Paavo, A. Utneher  
2 FTE

**PSR Relief Staff**

**Clubhouse Employment Specialist**  
S. Muljo  
1 FTE

**Registered Nurse/ CSM**  
M. Packham  
1 FTE

**Clinician**  
D. Lawton  
M. Kleinbrook  
2 FTE

**Co-Occurring Specialist/CSM**  
1 Open  
1 FTE

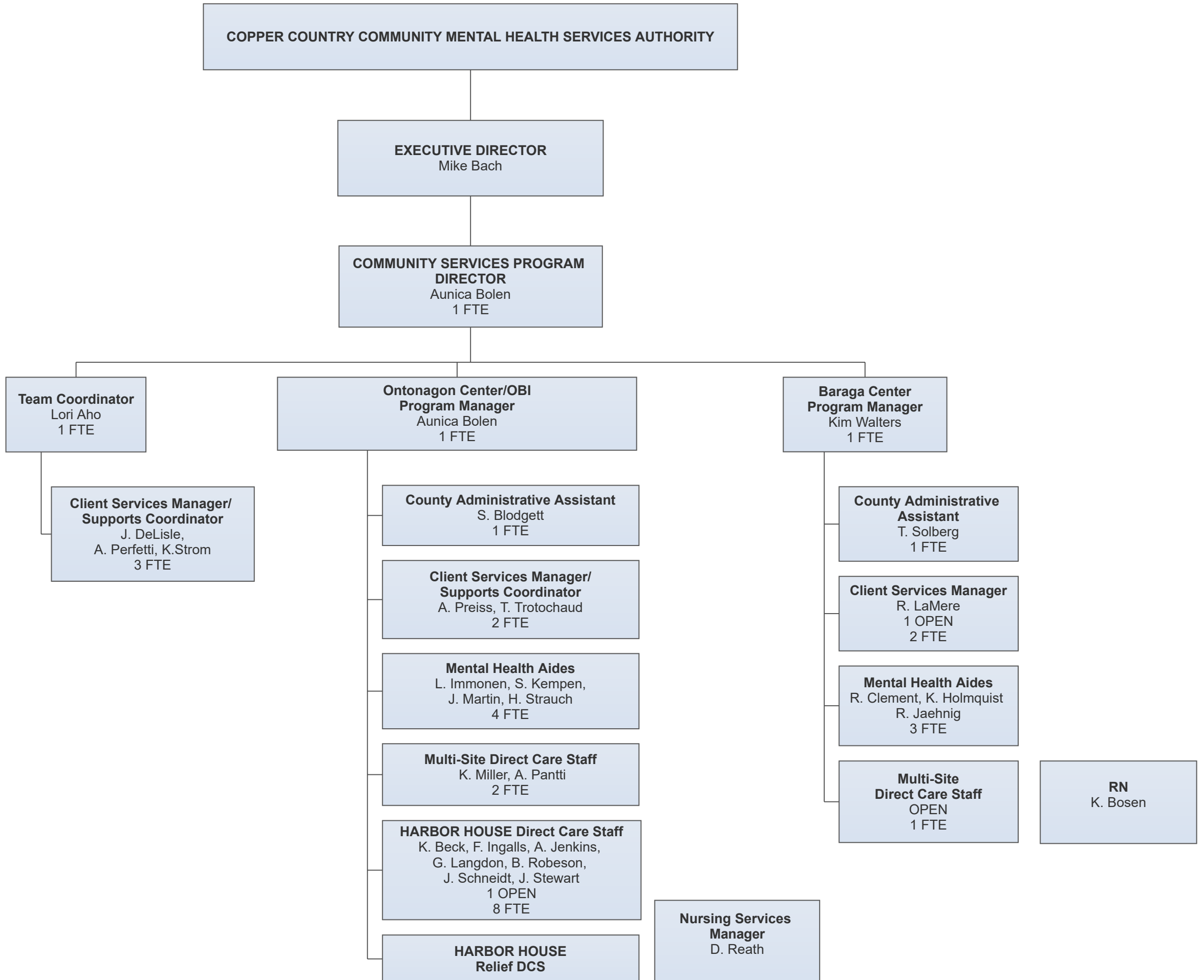
**Secretary/ Benefits Specialist**  
K. Niemi  
1 FTE

**Advocate**  
A. Kievi  
1 FTE

**OBRA Team Coordinator/RN**  
D. Haataja  
1 FTE

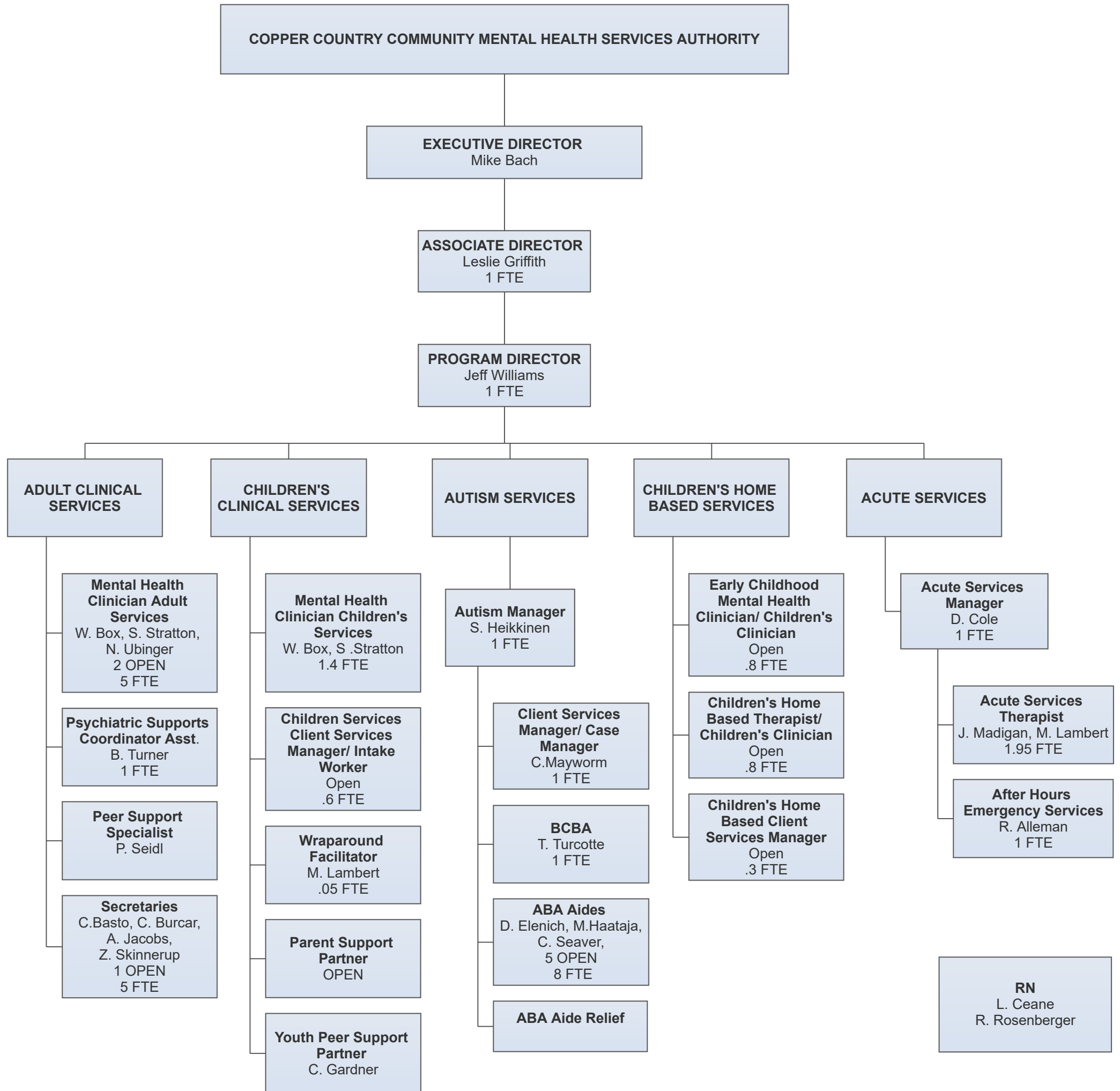
# CCCMHSA ORGANIZATIONAL CHART - JUNE 2022

## COMMUNITY SERVICES II

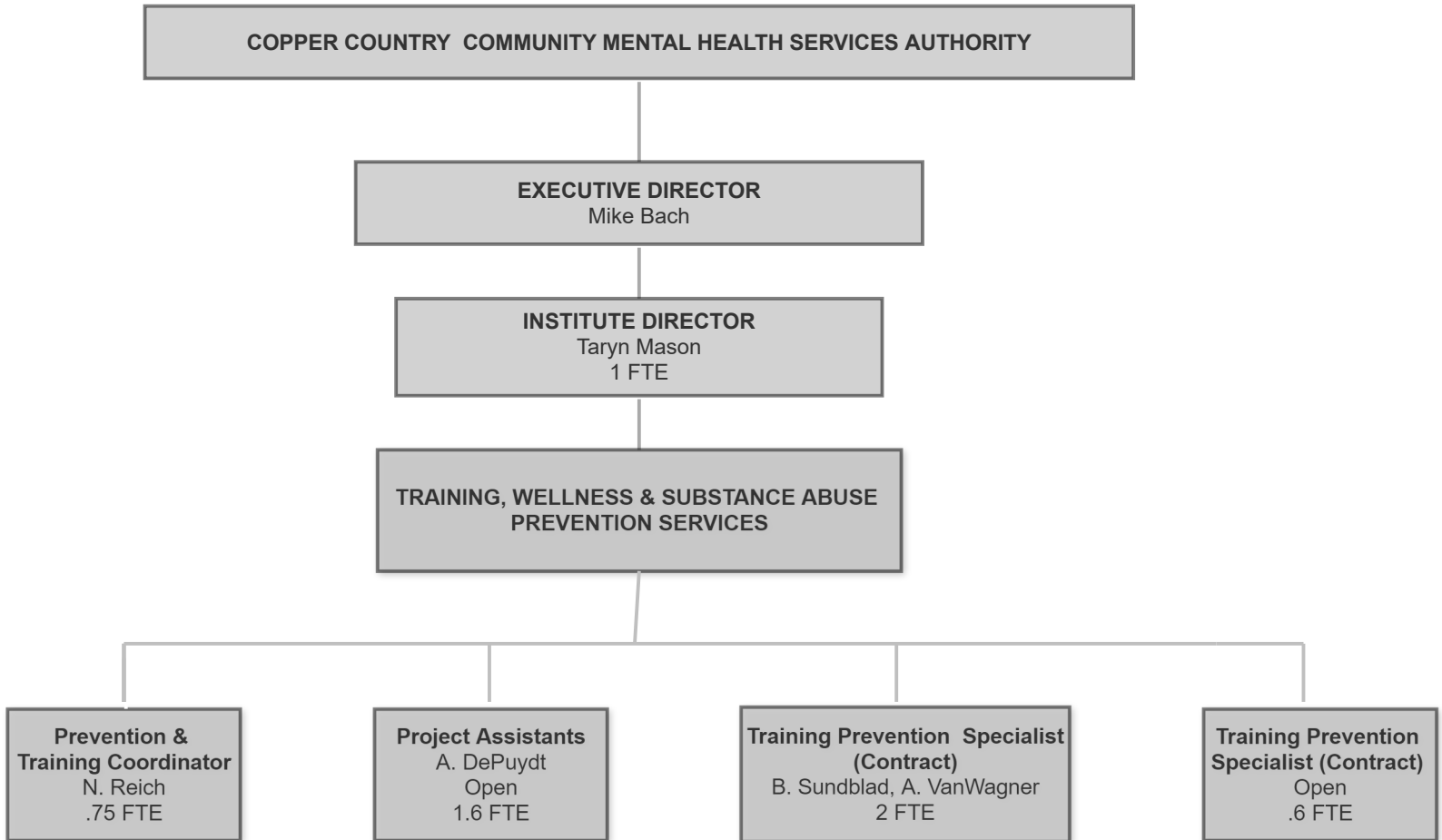


# CCCMHSA ORGANIZATIONAL CHART - JUNE 2022

## CLINIC SERVICES



**CCCMHSA ORGANIZATIONAL CHART - JUNE 2022  
THE INSTITUTE**



**CCCMHSA ORGANIZATIONAL CHART- JUNE 2022  
PSYCHIATRIC SERVICES**

