



Copper Country Community Mental Health Services Authority

ORGANIZATIONAL CHART

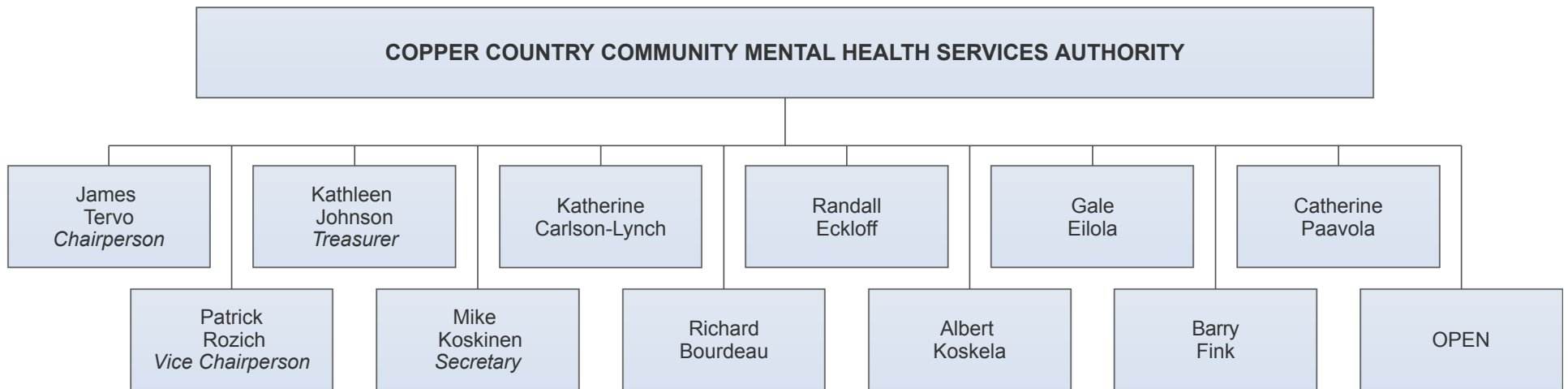
July 2021

The mission of Copper Country Community Mental Health Services Authority is to ensure that appropriate, cost-effective, and quality behavioral health services are accessible to eligible persons in Baraga, Houghton, Keweenaw and Ontonagon counties.

In service of its mission, Copper Country Community Mental Health will strive to provide a comprehensive array of behavioral health services for persons living within its four county catchment area. The continuum of services are intended to increase independence, improve quality of life, and support community integration and inclusion. Service is tailored to the needs and strengths of the consumers.

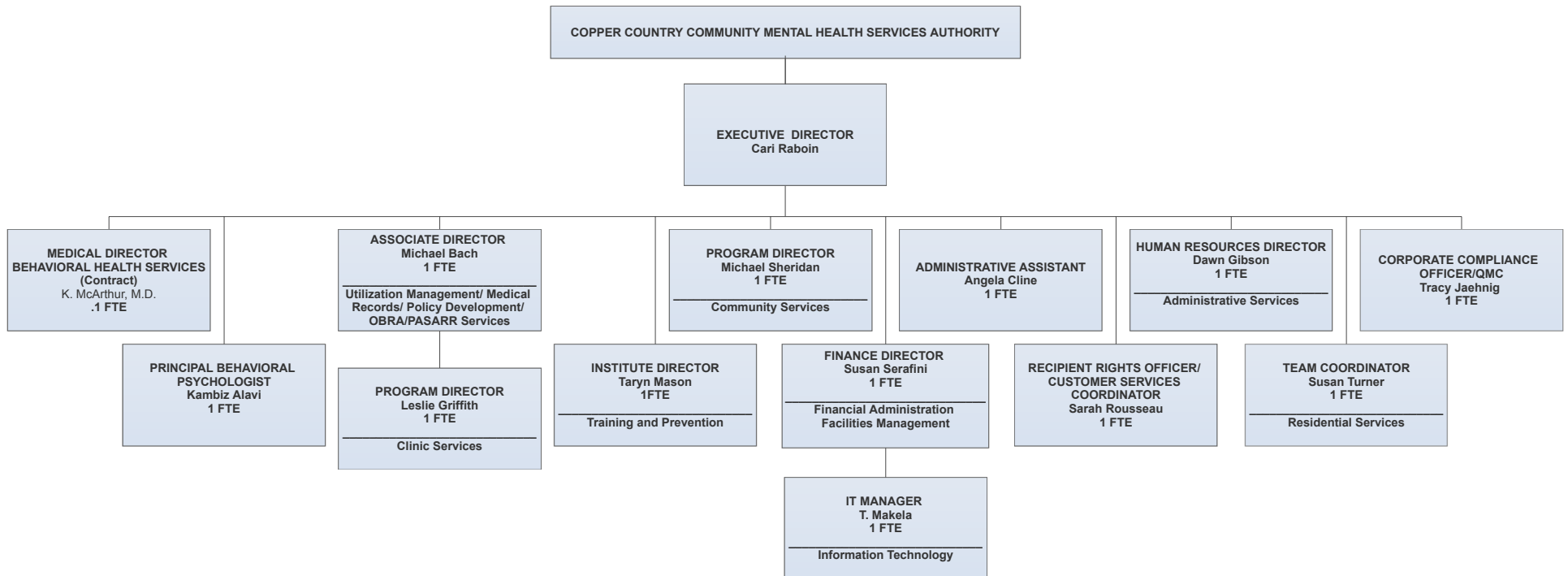
CCCMHSA ORGANIZATIONAL CHART - JULY 2021

BOARD STRUCTURE

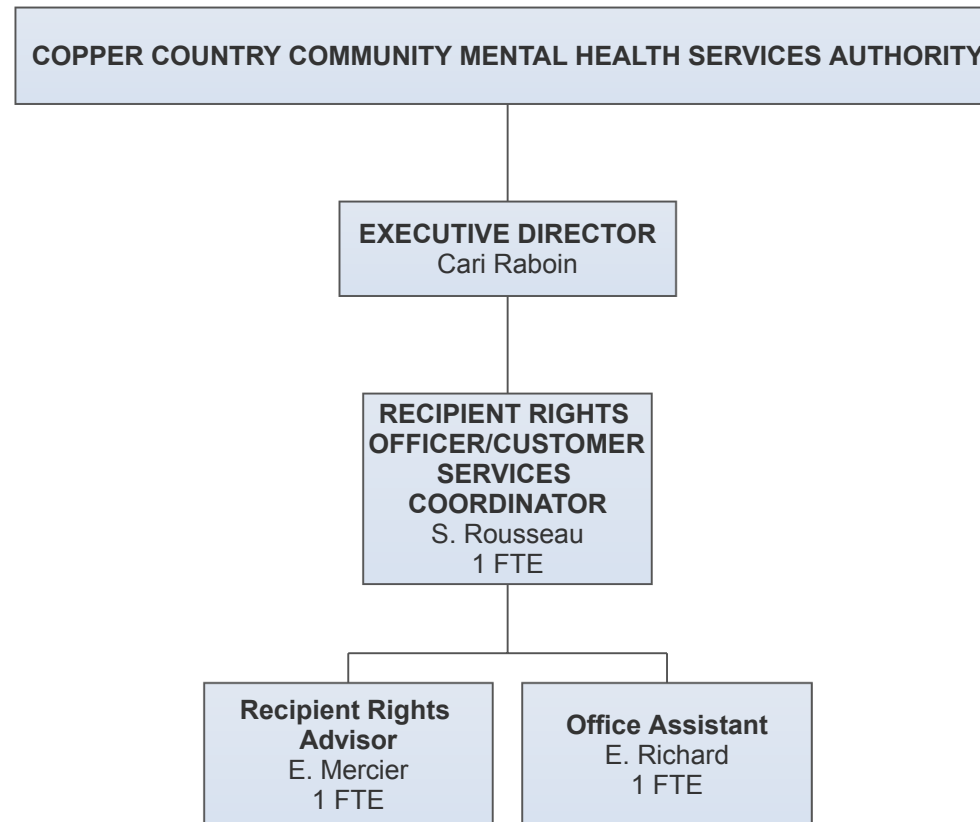


CCCMHSA ORGANIZATIONAL CHART- JULY 2021

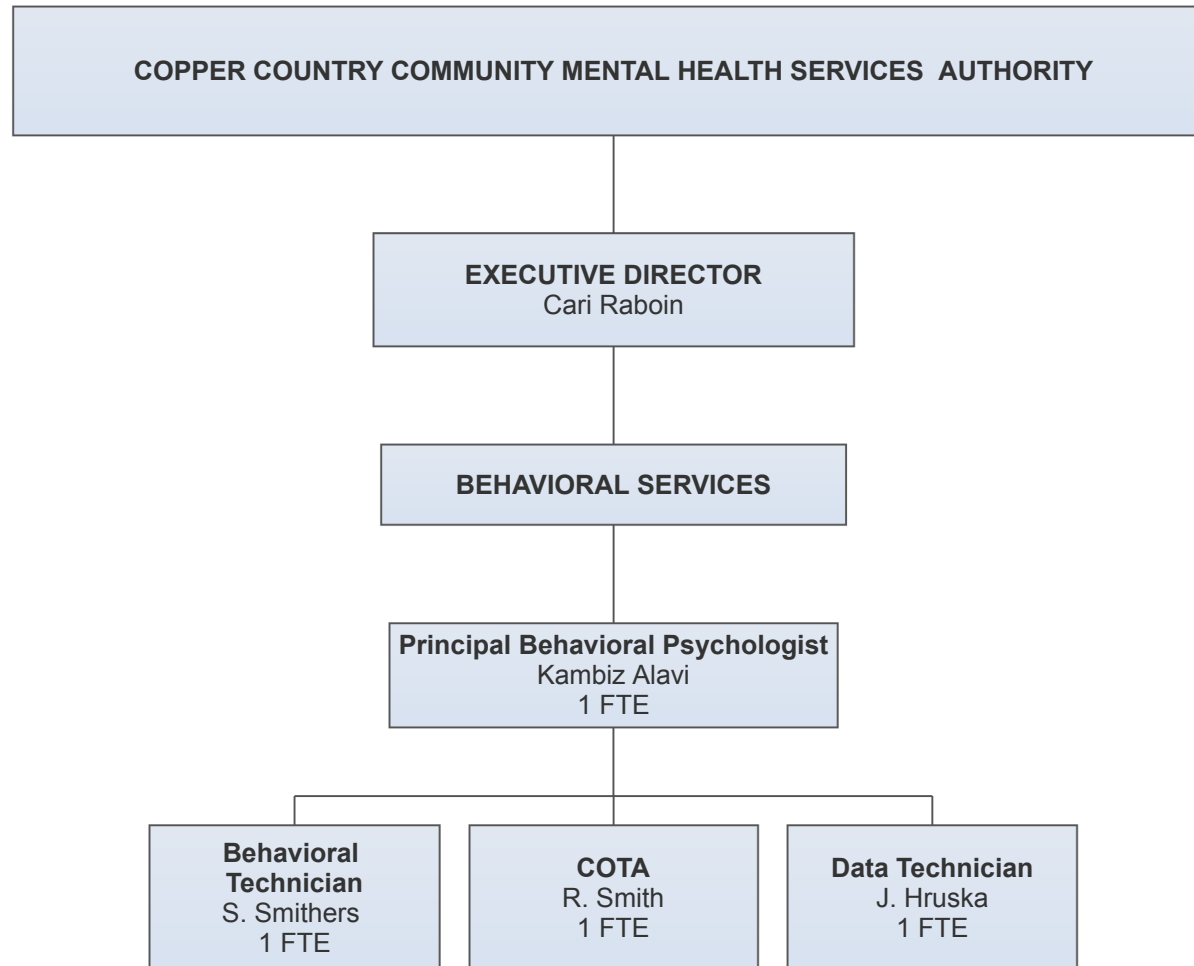
MANAGEMENT STRUCTURE



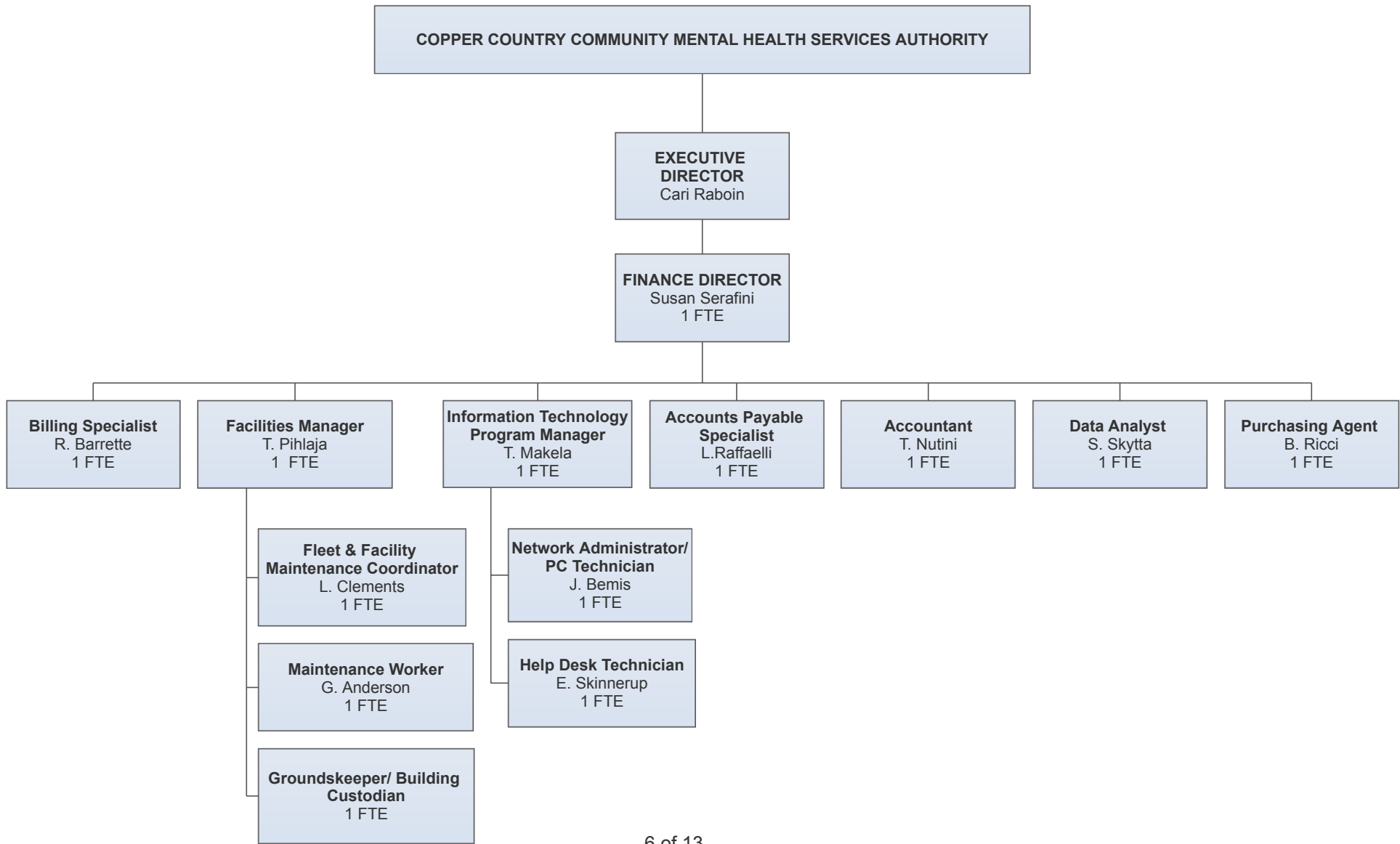
CCCMHSA ORGANIZATIONAL CHART - JULY 2021 RECIPIENT RIGHTS/CUSTOMER SERVICE



CCCMHSA ORGANIZATIONAL CHART- JULY 2021 BEHAVIORAL SERVICES

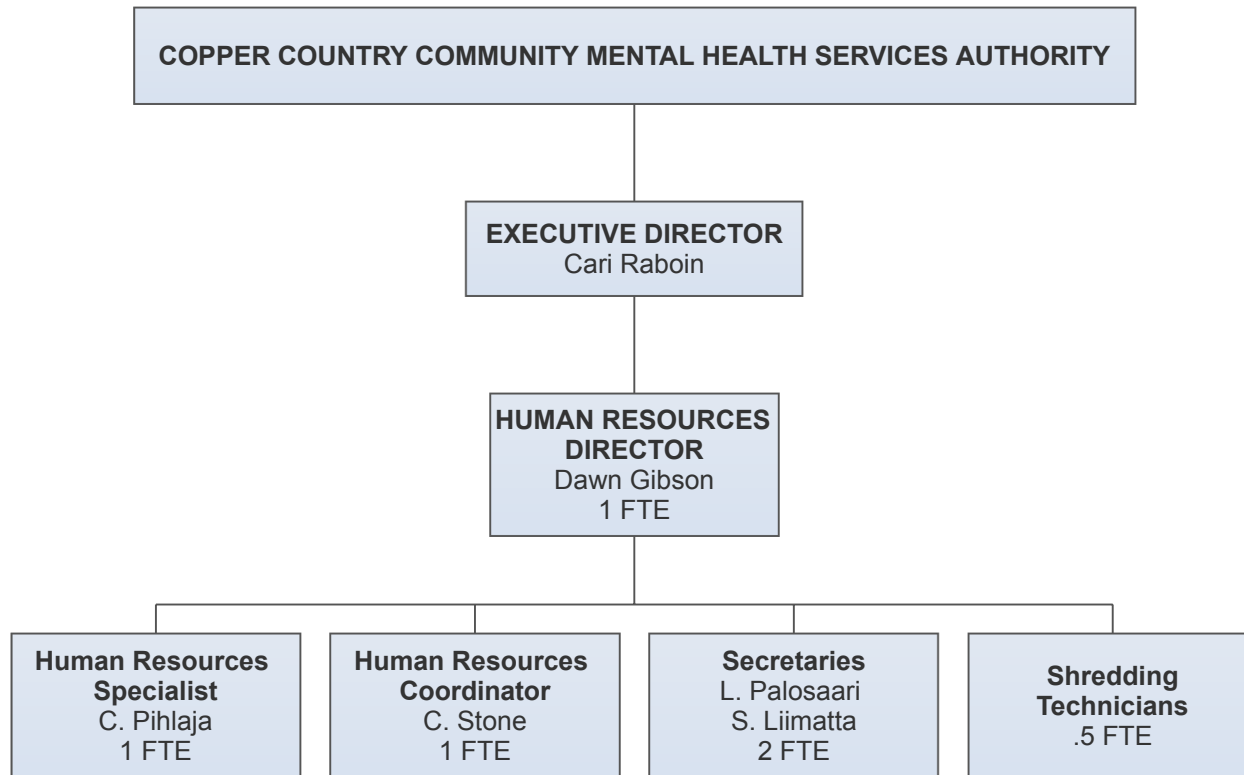


CCCMHSA ORGANIZATIONAL CHART - JULY 2021
FINANCIAL ADMINISTRATION/ MAINTENANCE/ INFORMATION TECHNOLOGY



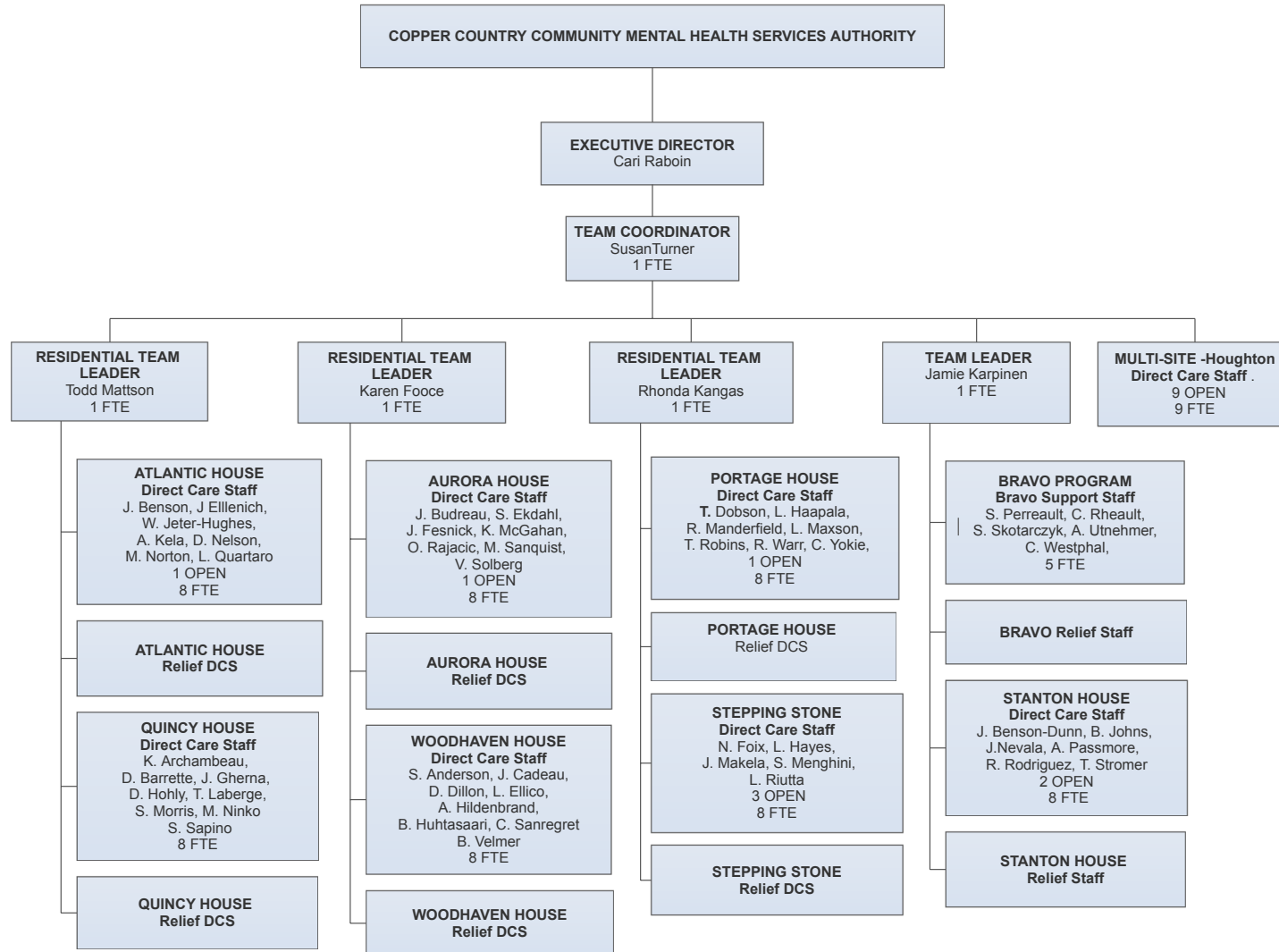
CCCMHSA ORGANIZATIONAL CHART - JULY 2021

ADMINISTRATIVE SERVICES



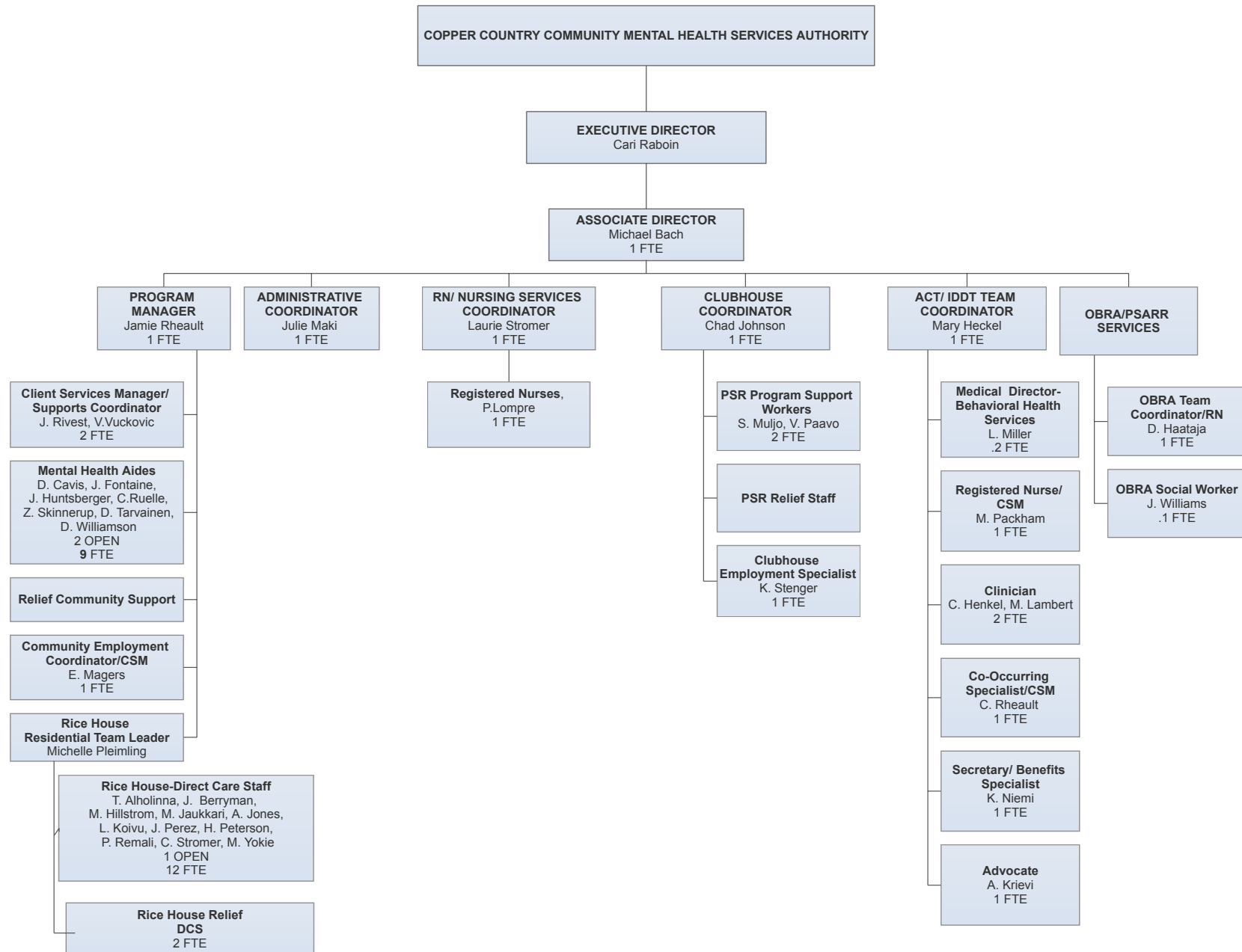
CCCMHSA ORGANIZATIONAL CHART- JULY 2021

RESIDENTIAL SERVICES



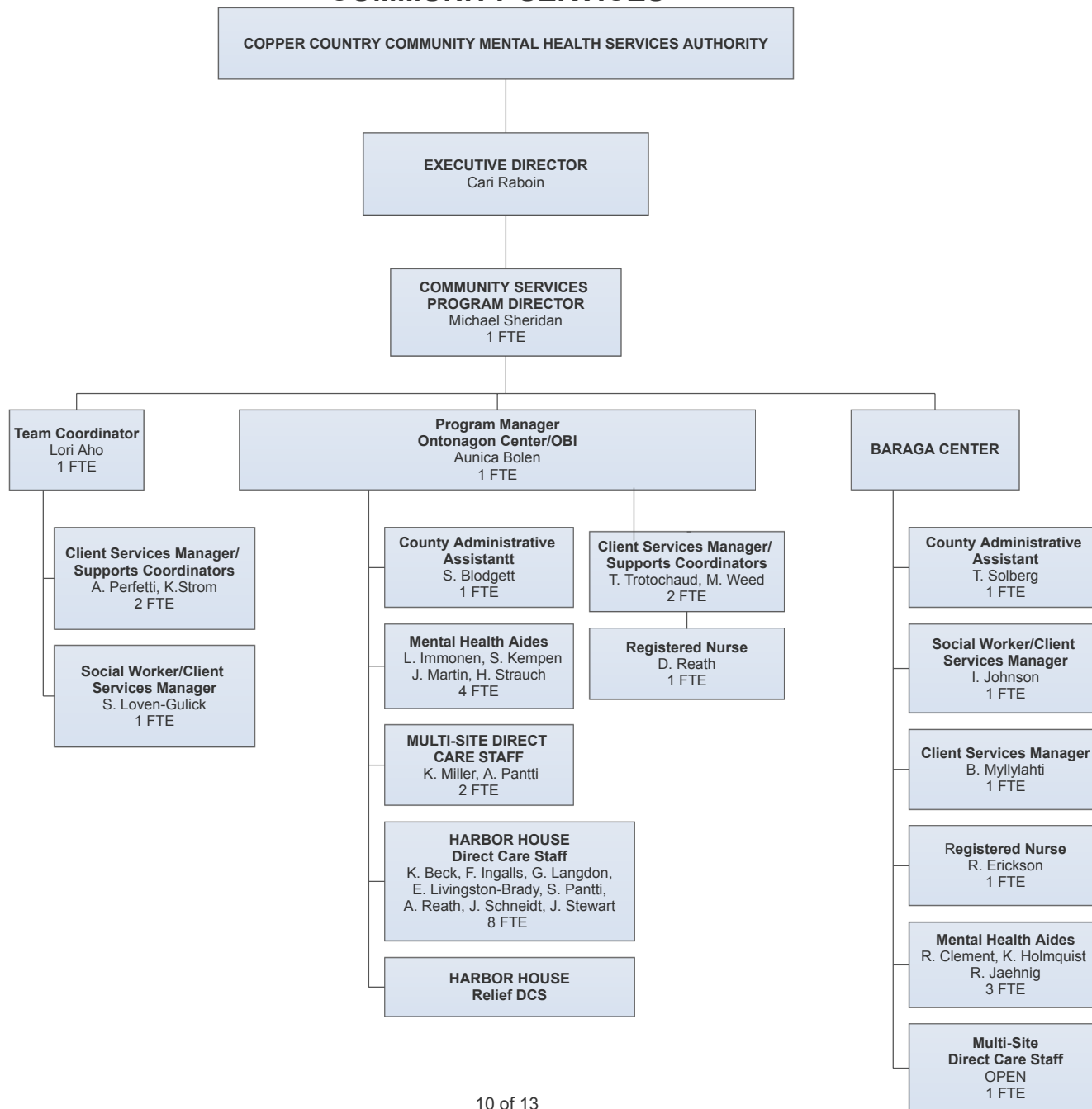
CCCMHSA ORGANIZATIONAL CHART - JULY 2021

COMMUNITY SERVICES



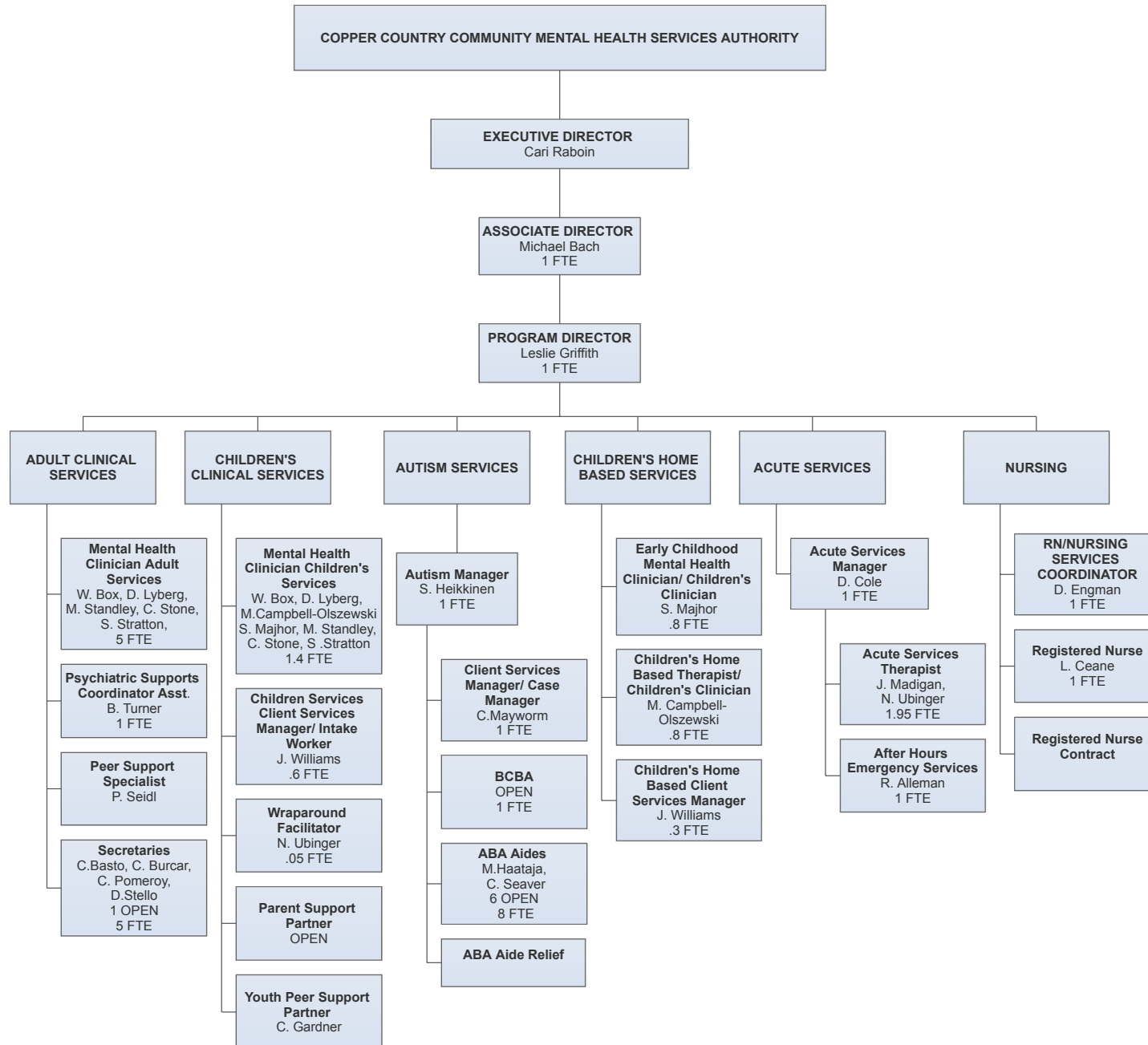
CCCMHSA ORGANIZATIONAL CHART - JULY 2021

COMMUNITY SERVICES



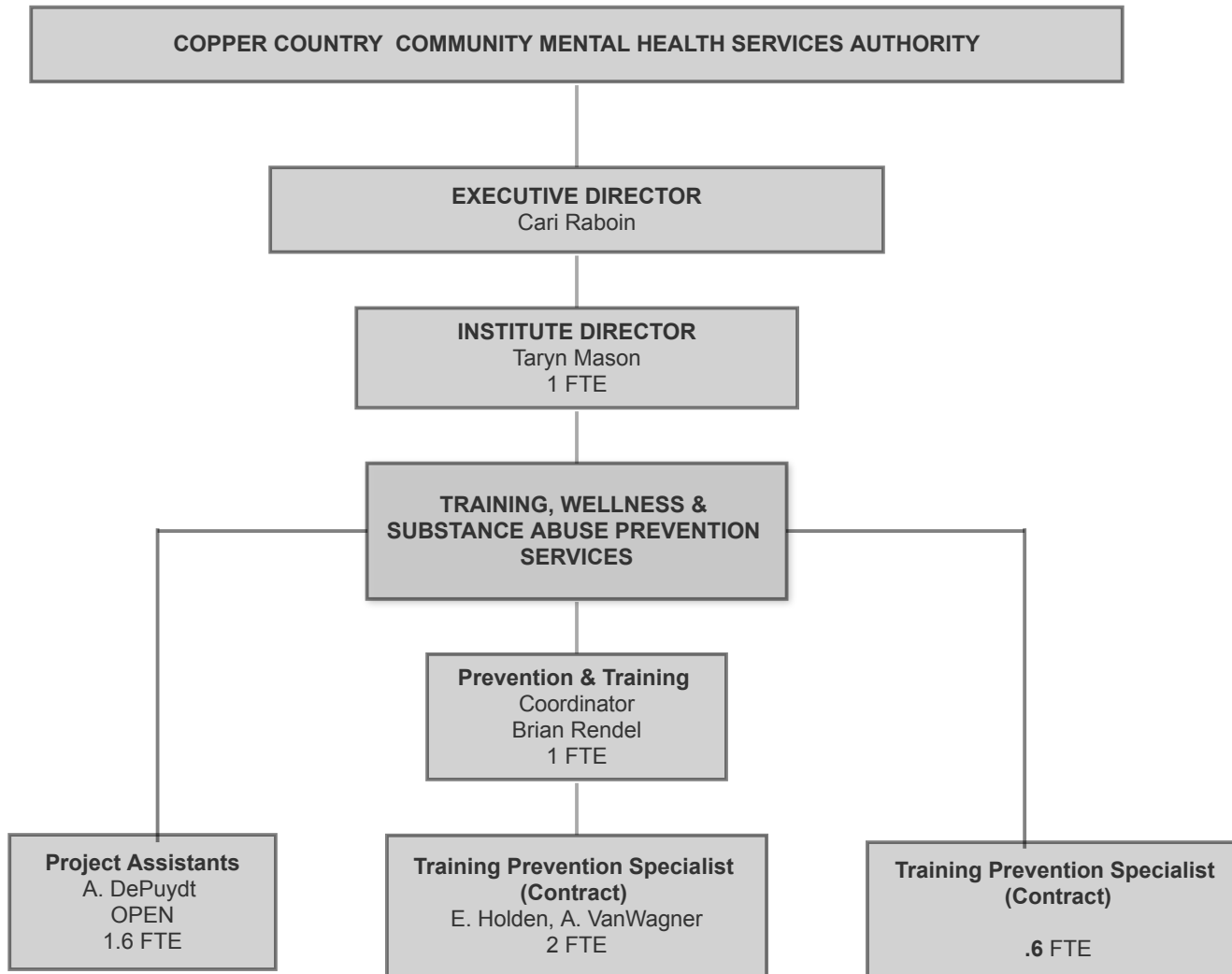
CCCMHSA ORGANIZATIONAL CHART- JULY 2021

CLINIC SERVICES



CCCMHSA ORGANIZATIONAL CHART - JULY 2021

THE INSTITUTE



CCCMHSA ORGANIZATIONAL CHART- JULY 2021

PSYCHIATRIC SERVICES

