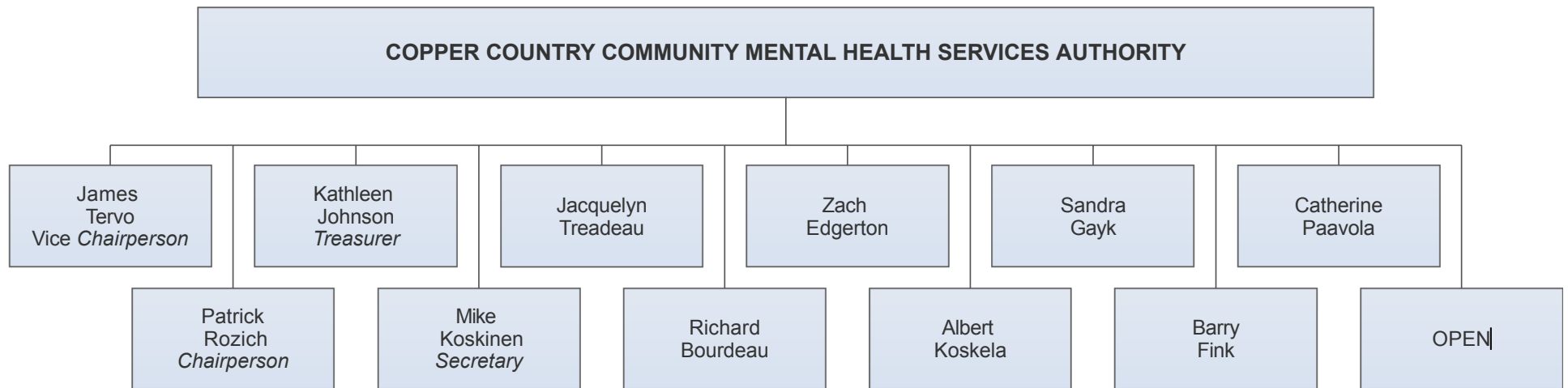


**Copper Country
Mental Health
Services Authority
ORGANIZATIONAL
CHART
June 2020**

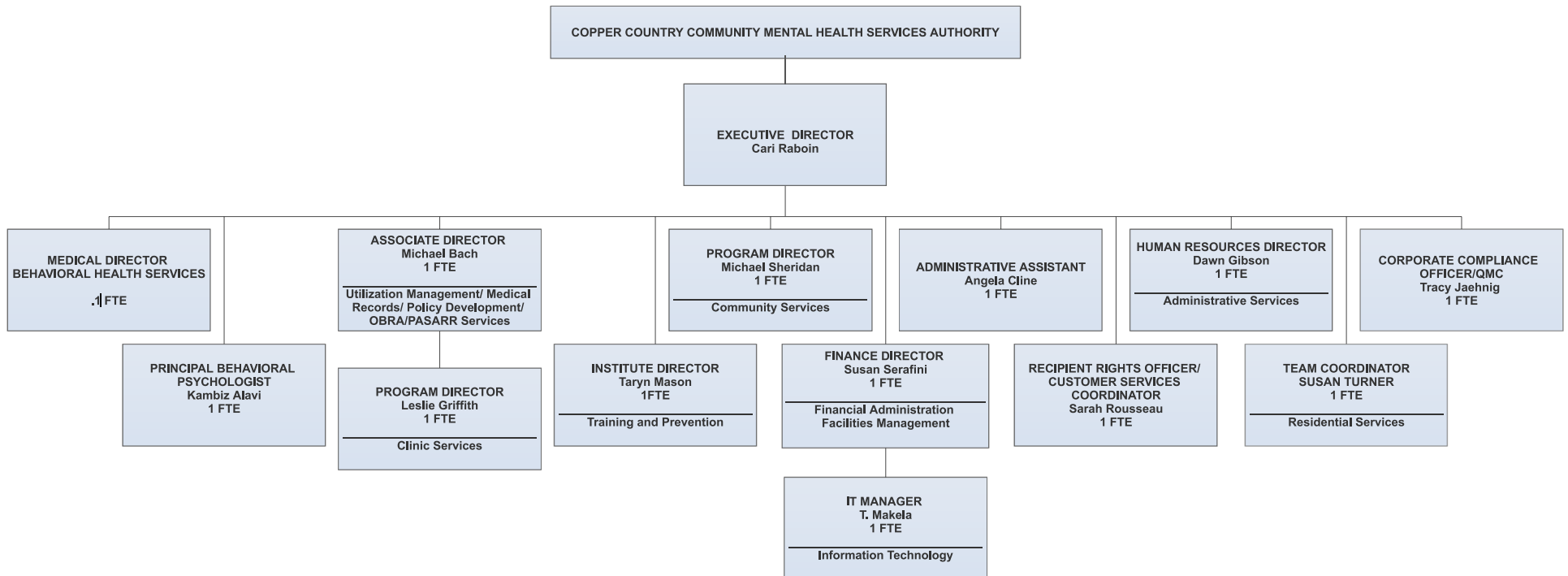
The mission of Copper Country Mental Health Services Authority is to ensure that appropriate, cost-effective, and quality behavioral health services are accessible to eligible persons in Baraga, Houghton, Keweenaw and Ontonagon counties.

In service of its mission, Copper Country Mental Health will strive to provide a comprehensive array of behavioral health services for persons living within its four county catchment area. The continuum of services are intended to increase independence, improve quality of life, and support community integration and inclusion. Service is tailored to the needs and strengths of the consumers.

CCCMHSA ORGANIZATIONAL CHART - JUNE 2020 BOARD STRUCTURE

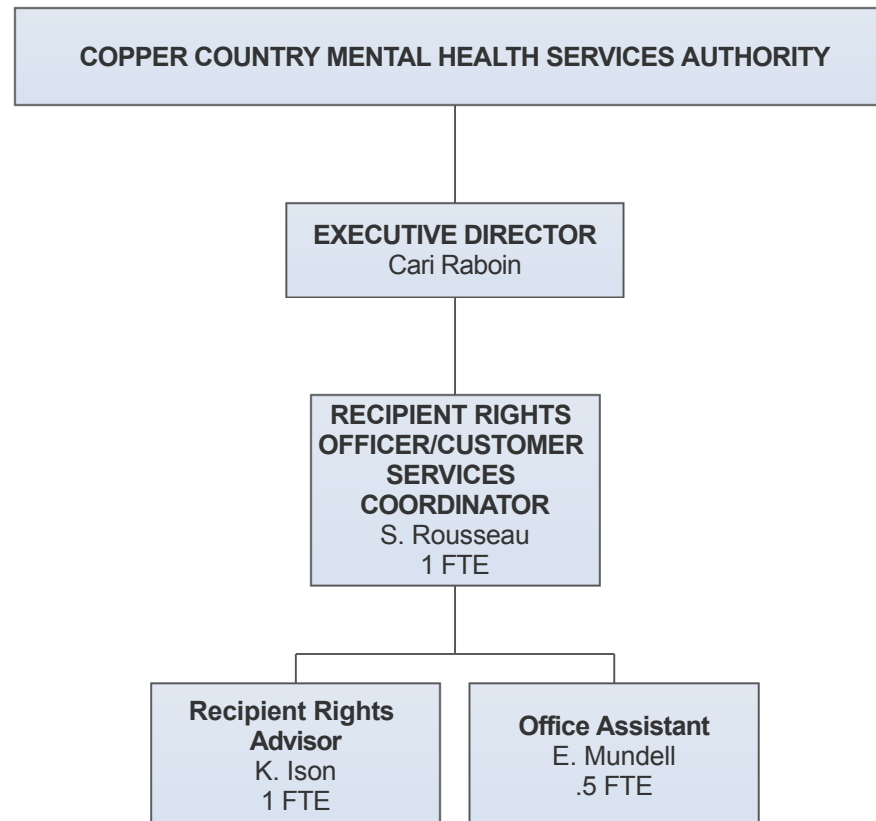


CCCMHSA ORGANIZATIONAL CHART- JUNE 2020 MANAGEMENT STRUCTURE

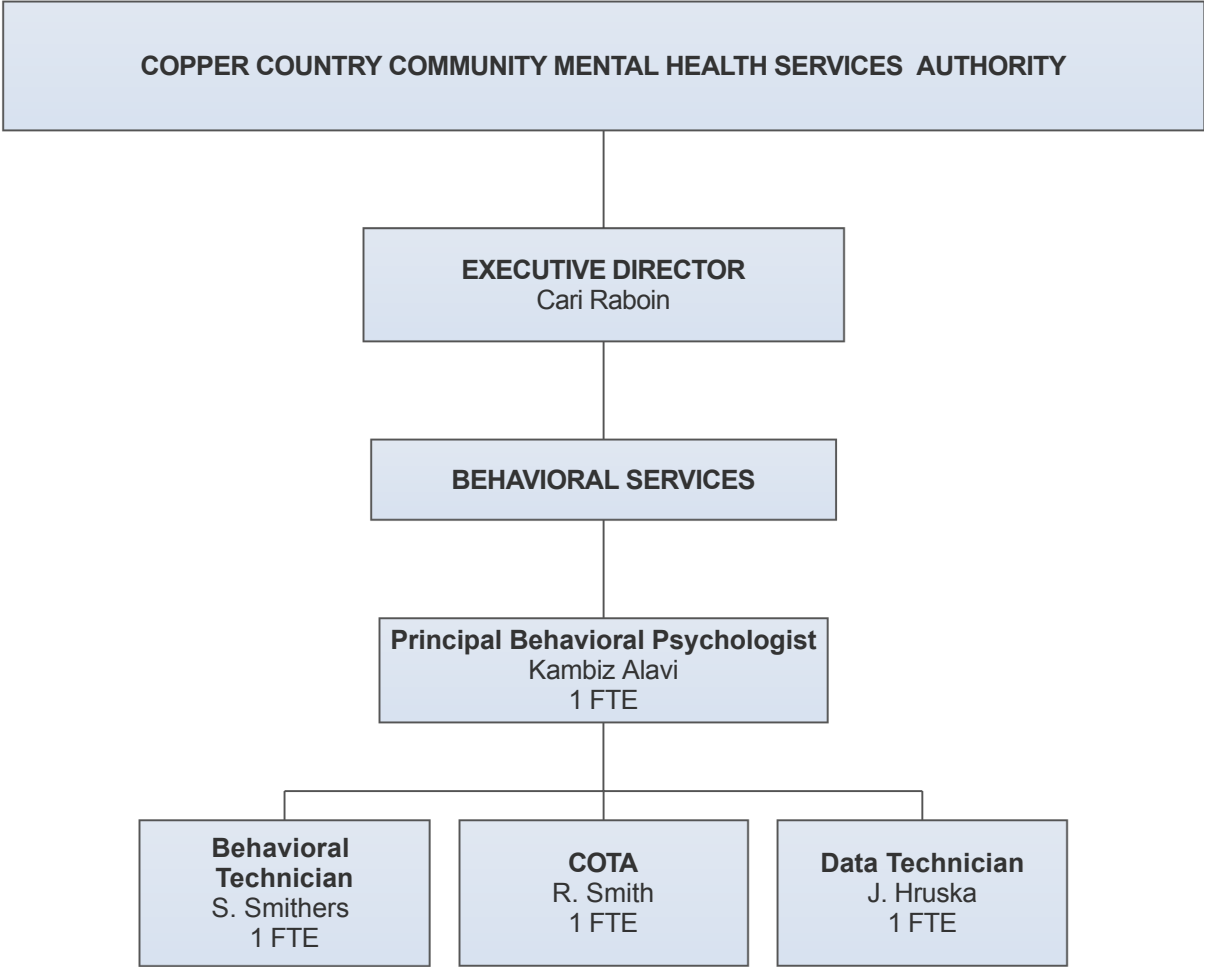


CCCMHSA ORGANIZATIONAL CHART - JUNE 2020

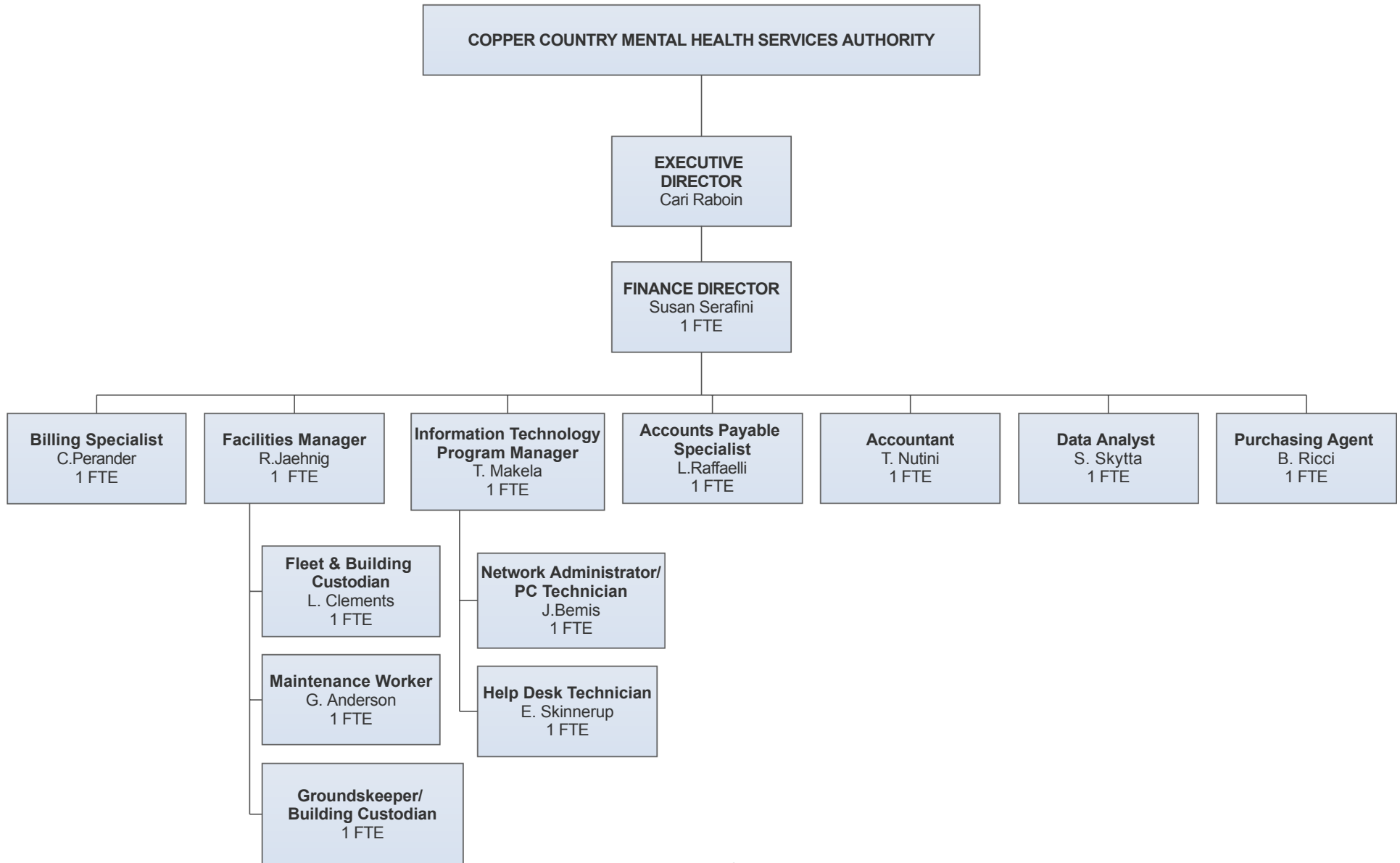
RECIPIENT RIGHTS/CUSTOMER SERVICE



CCCMHSA ORGANIZATIONAL CHART- JUNE 2020
BEHAVIORAL SERVICES

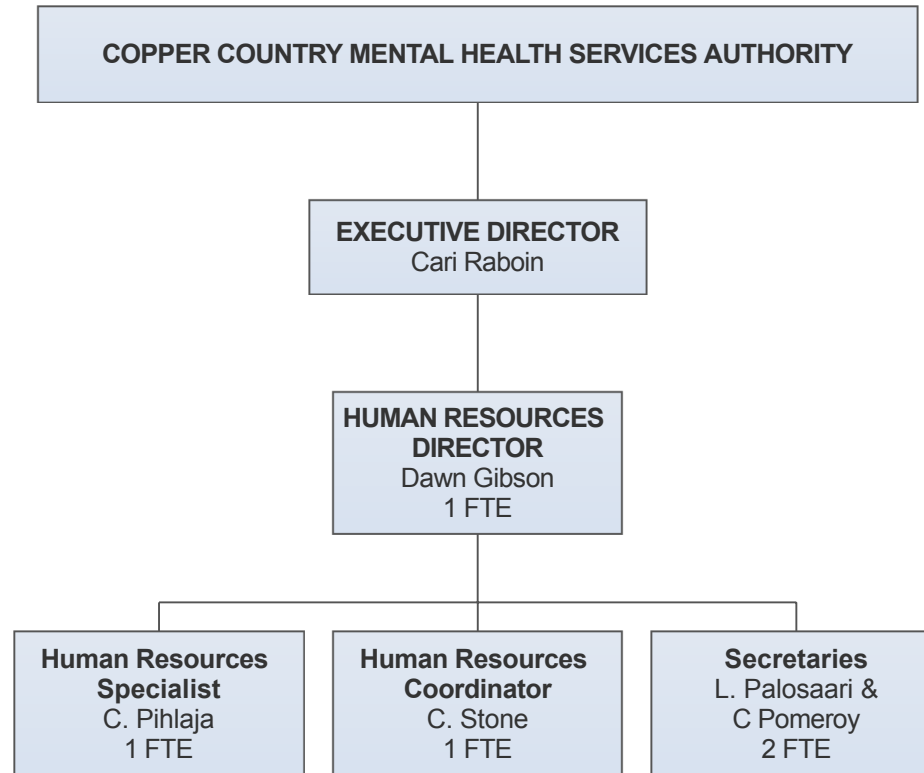


CCCMHSA ORGANIZATIONAL CHART - JUNE 2020
FINANCIAL ADMINISTRATION/ MAINTENANCE/ INFORMATION TECHNOLOGY



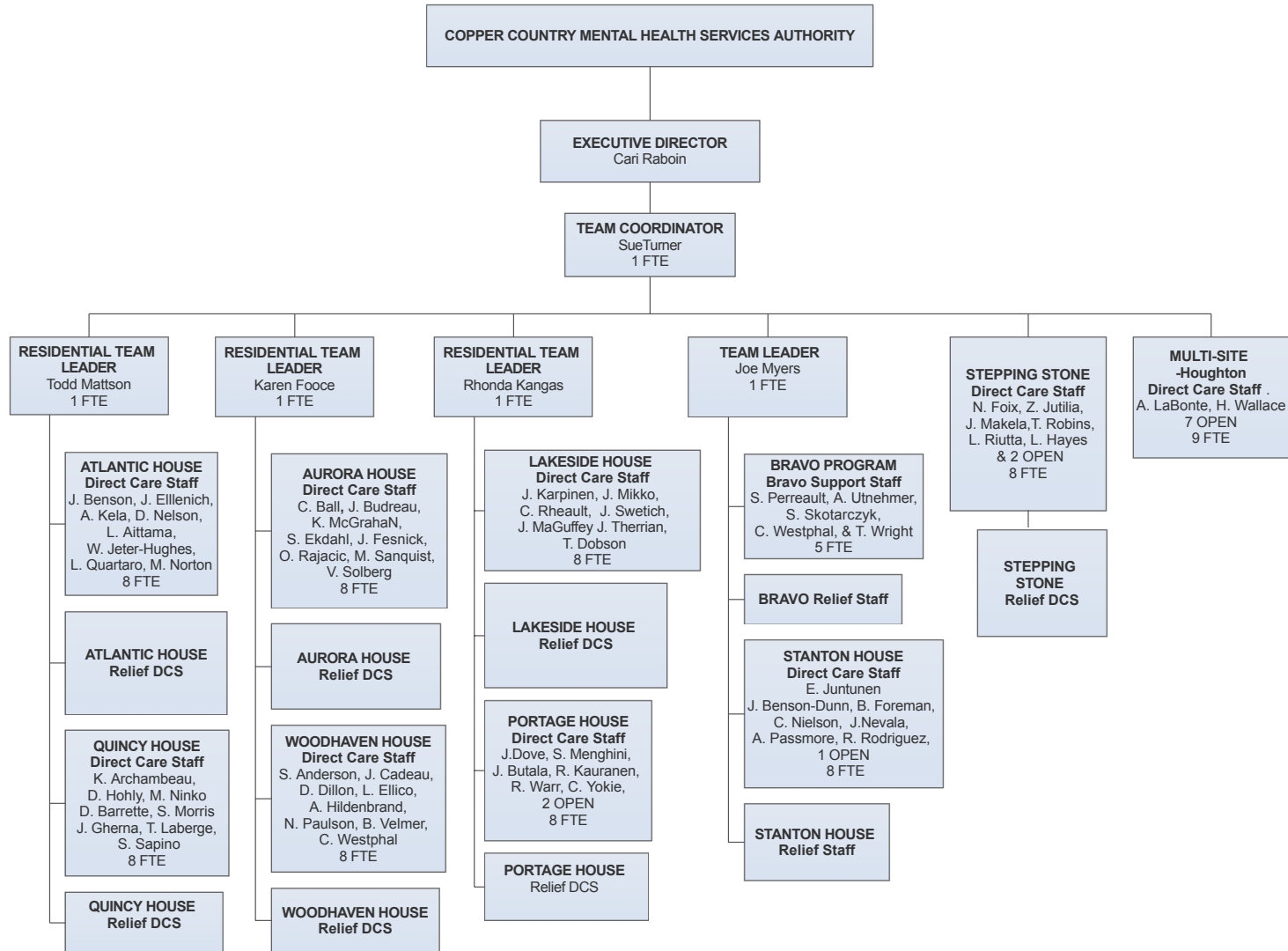
CCCMHSA ORGANIZATIONAL CHART - JUNE 2020

ADMINISTRATIVE SERVICES



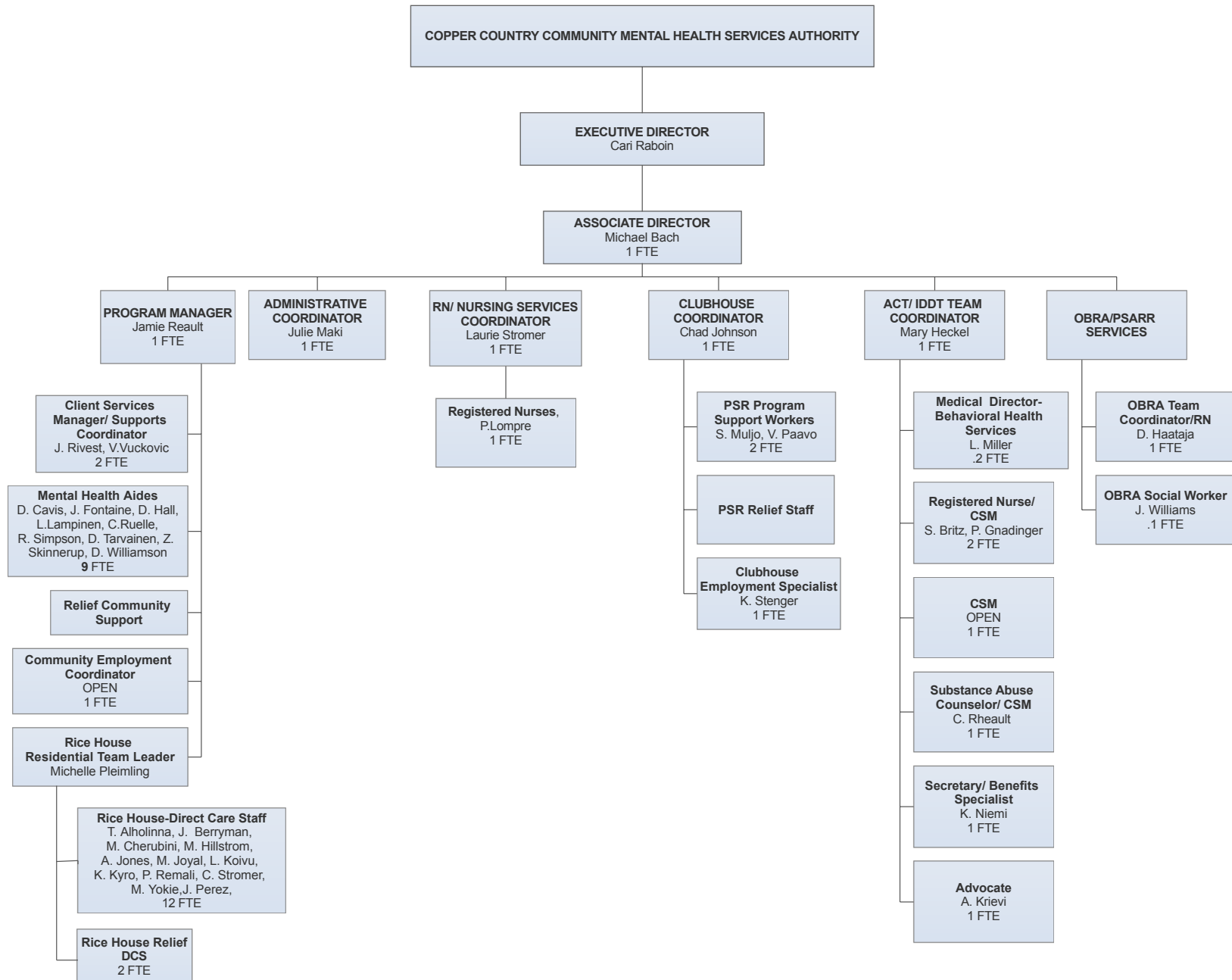
CCCMHSA ORGANIZATIONAL CHART- JUNE 2020

RESIDENTIAL SERVICES



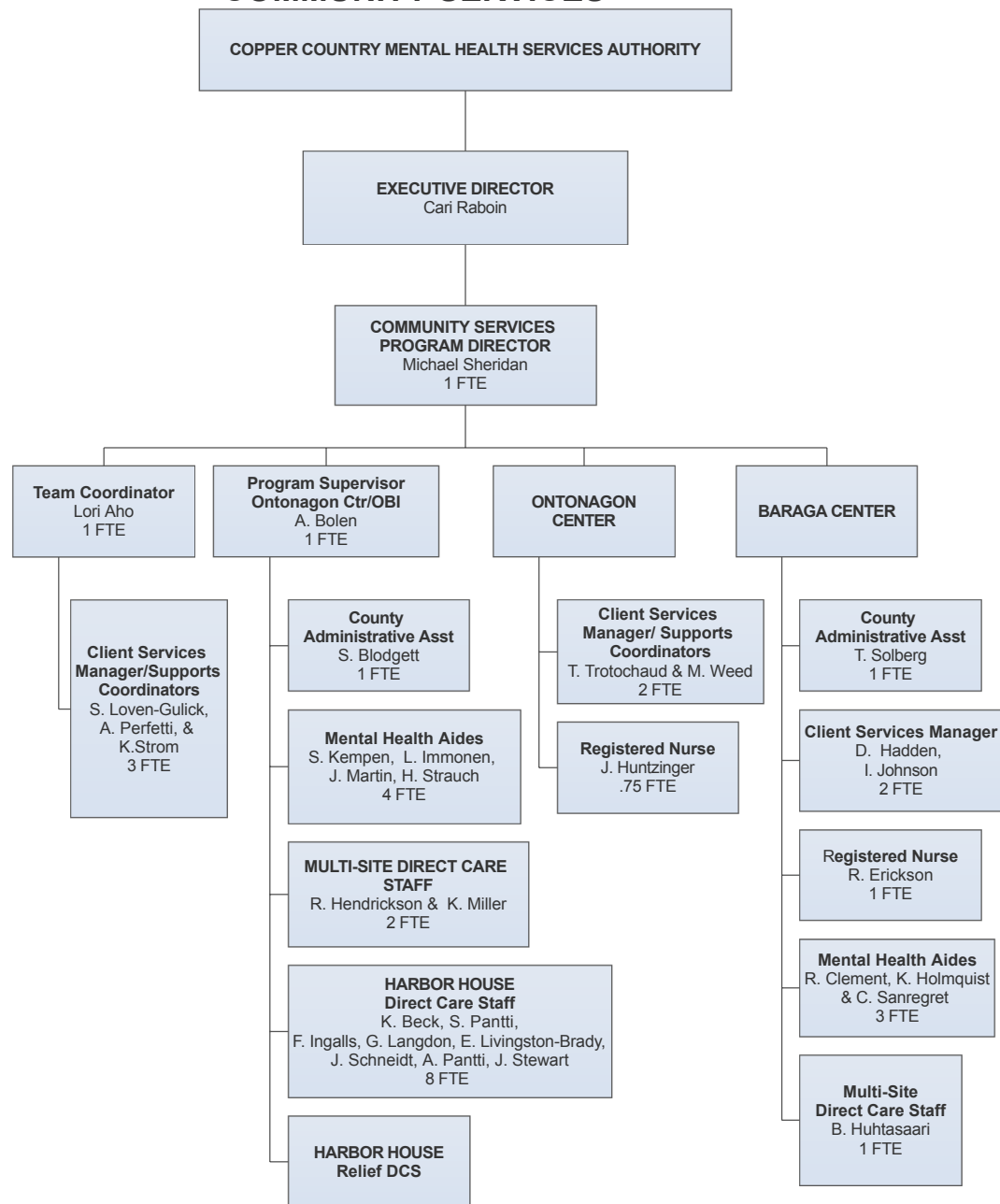
CCCMHSA ORGANIZATIONAL CHART - JUNE 2020

COMMUNITY SERVICES



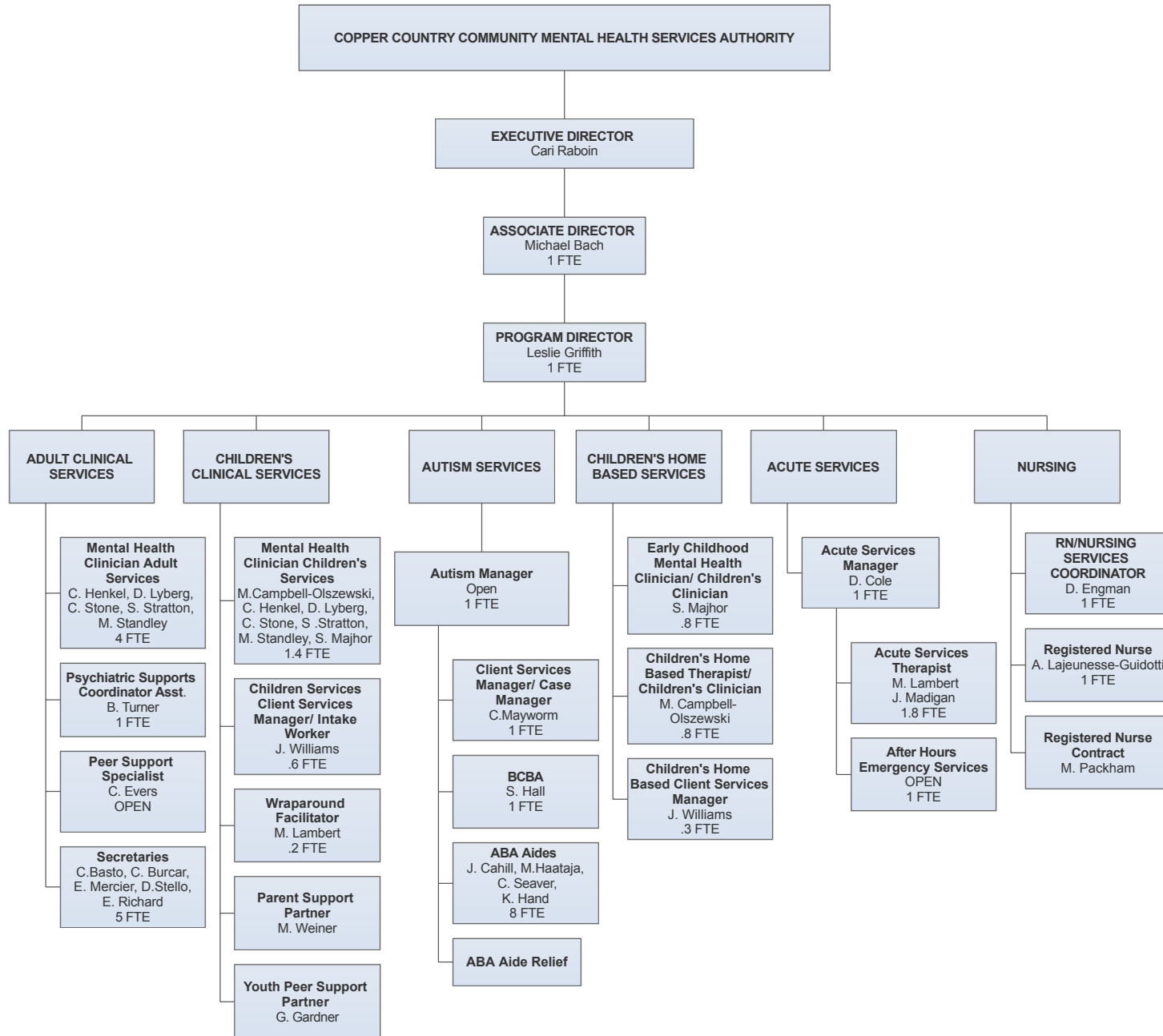
CCCMHSA ORGANIZATIONAL CHART - JUNE 2020

COMMUNITY SERVICES



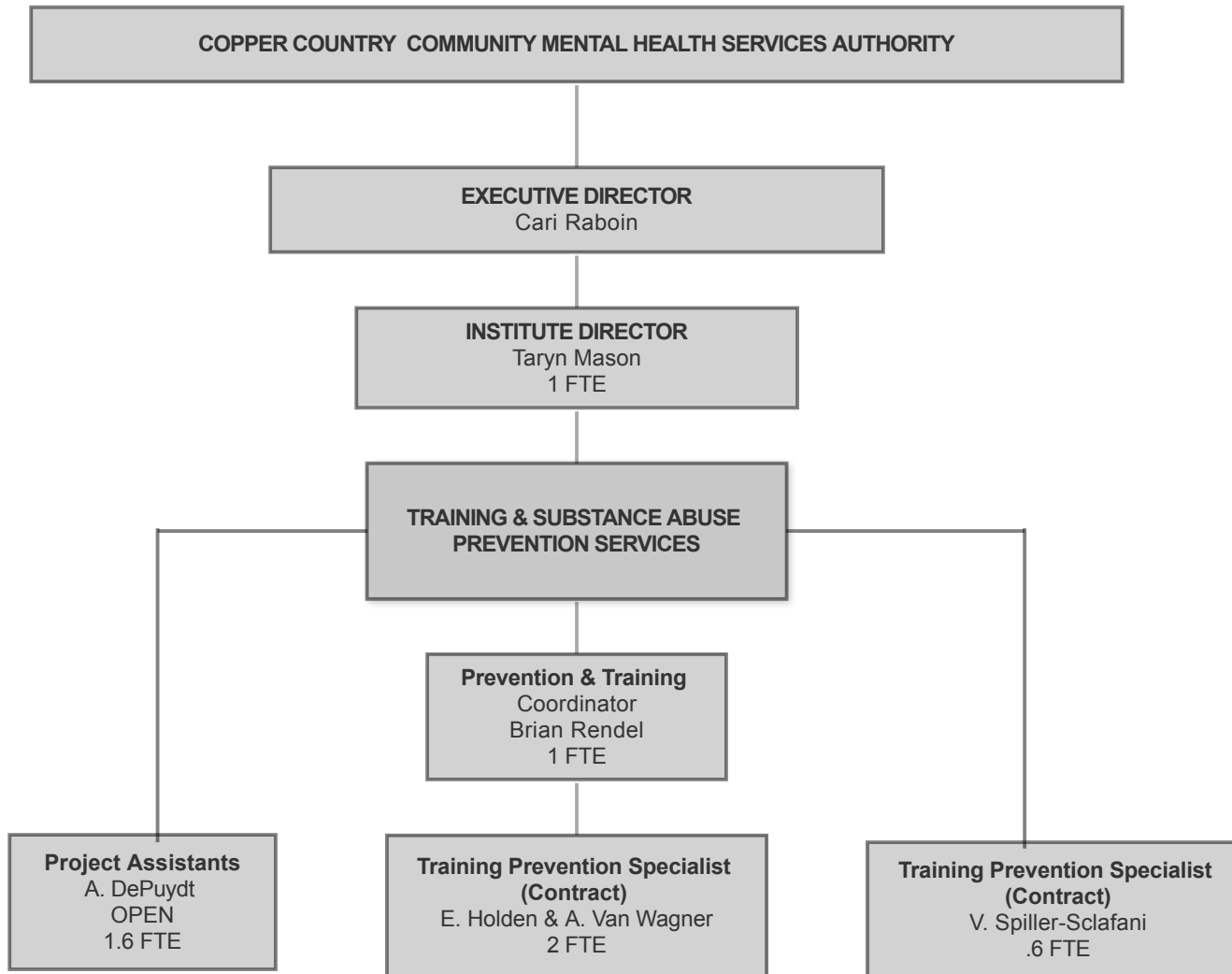
CCMHSA ORGANIZATIONAL CHART- JUNE 2020

CLINIC SERVICES



CCCMHA ORGANIZATIONAL CHART - JUNE 2020

THE INSTITUTE



CCCMHA ORGANIZATIONAL CHART- JUNE 2020 PSYCHIATRIC SERVICES

