

Copper Country Community Mental Health Services Authority

ORGANIZATIONAL CHART

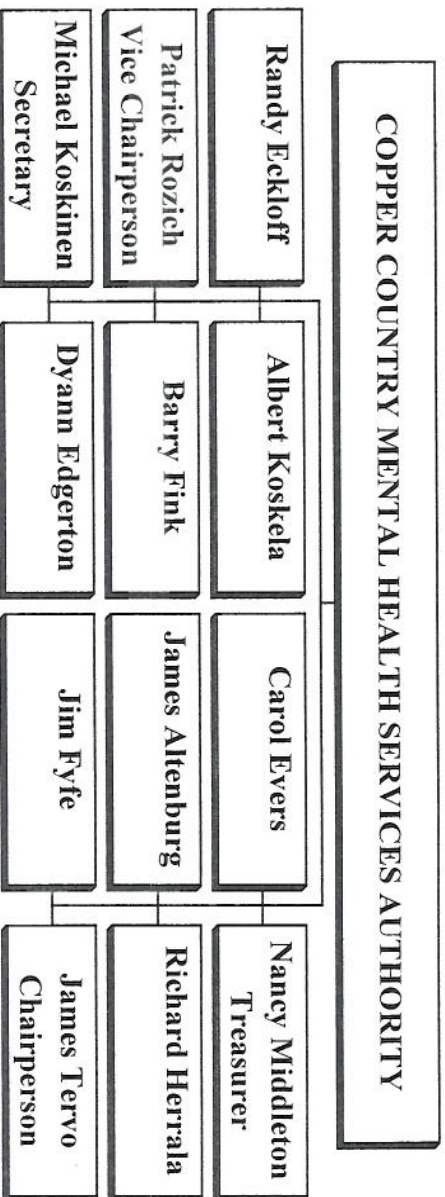
April, 2014

It is the mission of Copper Country Community Mental Health Services Authority to ensure that appropriate, cost-effective, and quality behavioral health services are accessible to persons in Baraga, Houghton, Keweenaw, and Ontonagon counties.

In the service of its mission, Copper Country Mental Health will strive to provide a comprehensive array of behavioral health services for persons living within its four county catchment area. The continuum of services are intended to increase independence, improve quality of life, and support community integration and inclusion. Service is tailored to the needs and strengths of consumers.

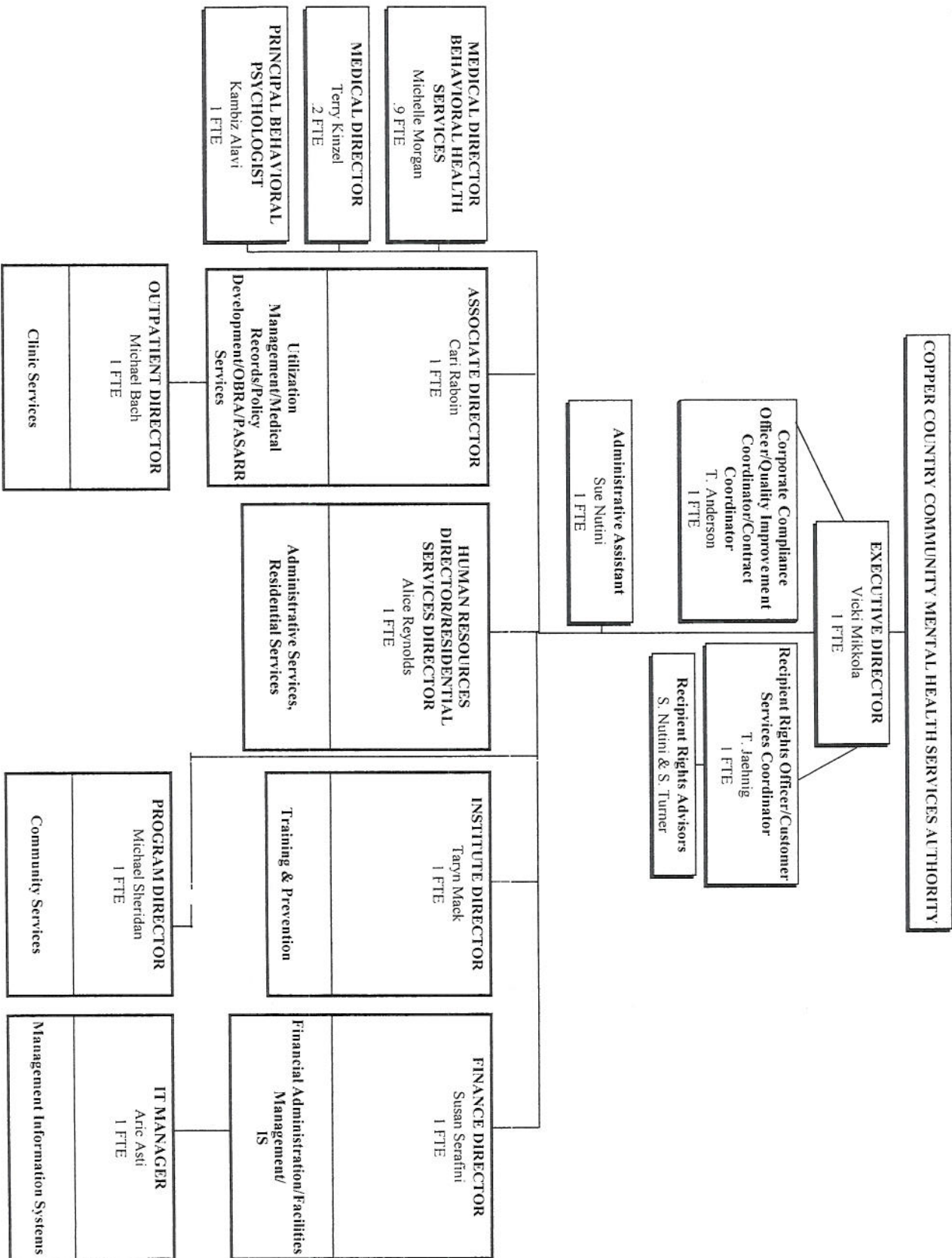
CCCMHSA ORGANIZATIONAL CHART - APRIL, 2014

BOARD STRUCTURE

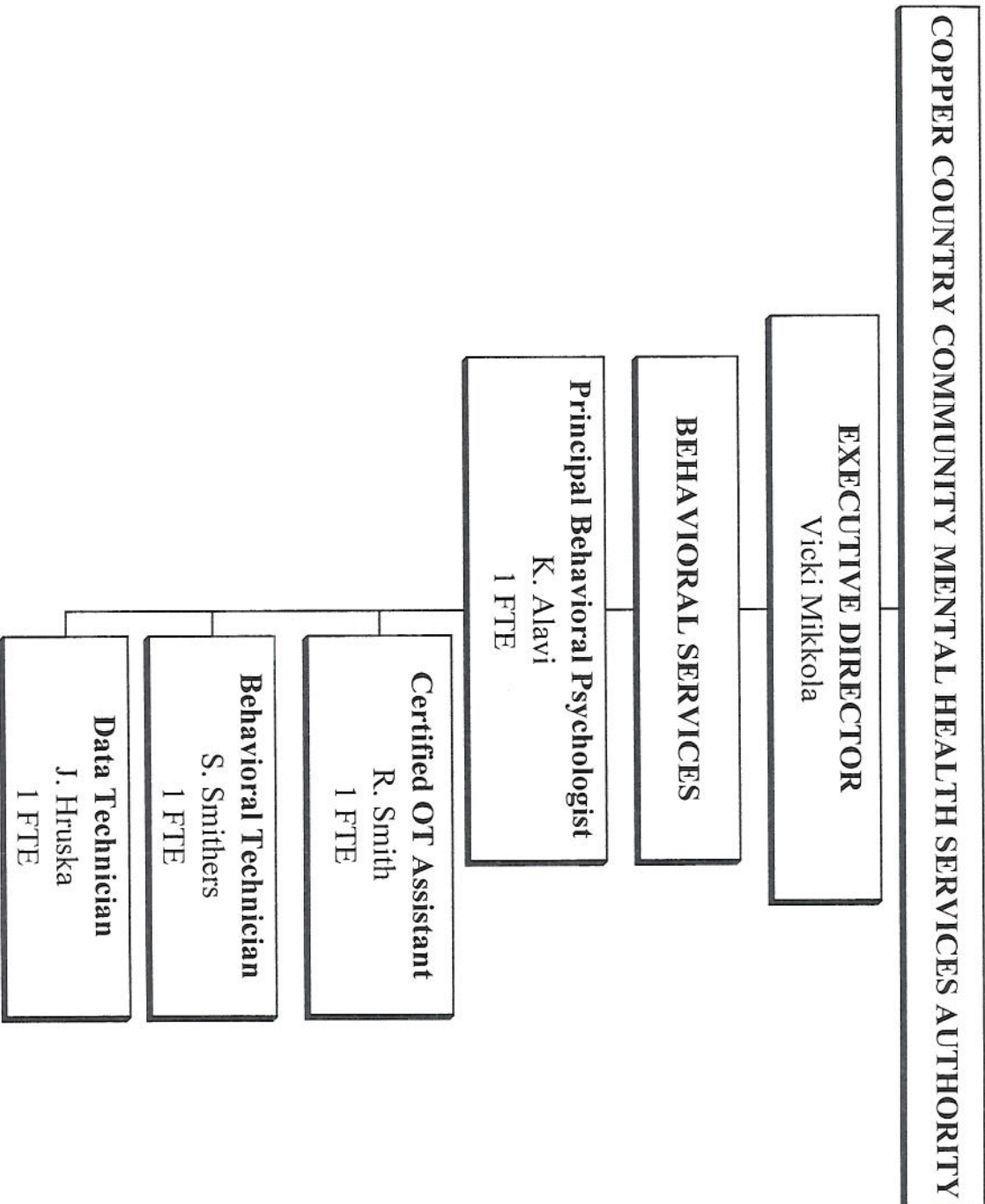


CCCMHSA ORGANIZATIONAL CHART - APRIL, 2014

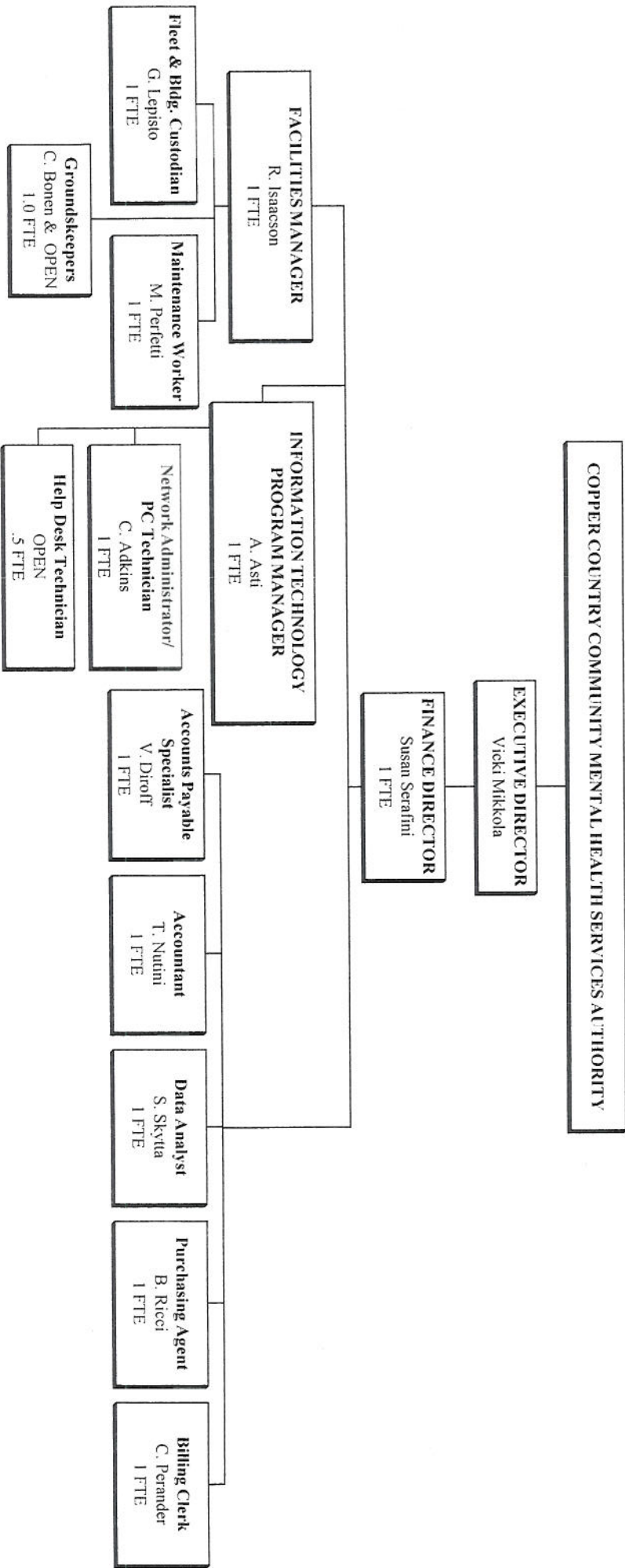
MANAGEMENT STRUCTURE



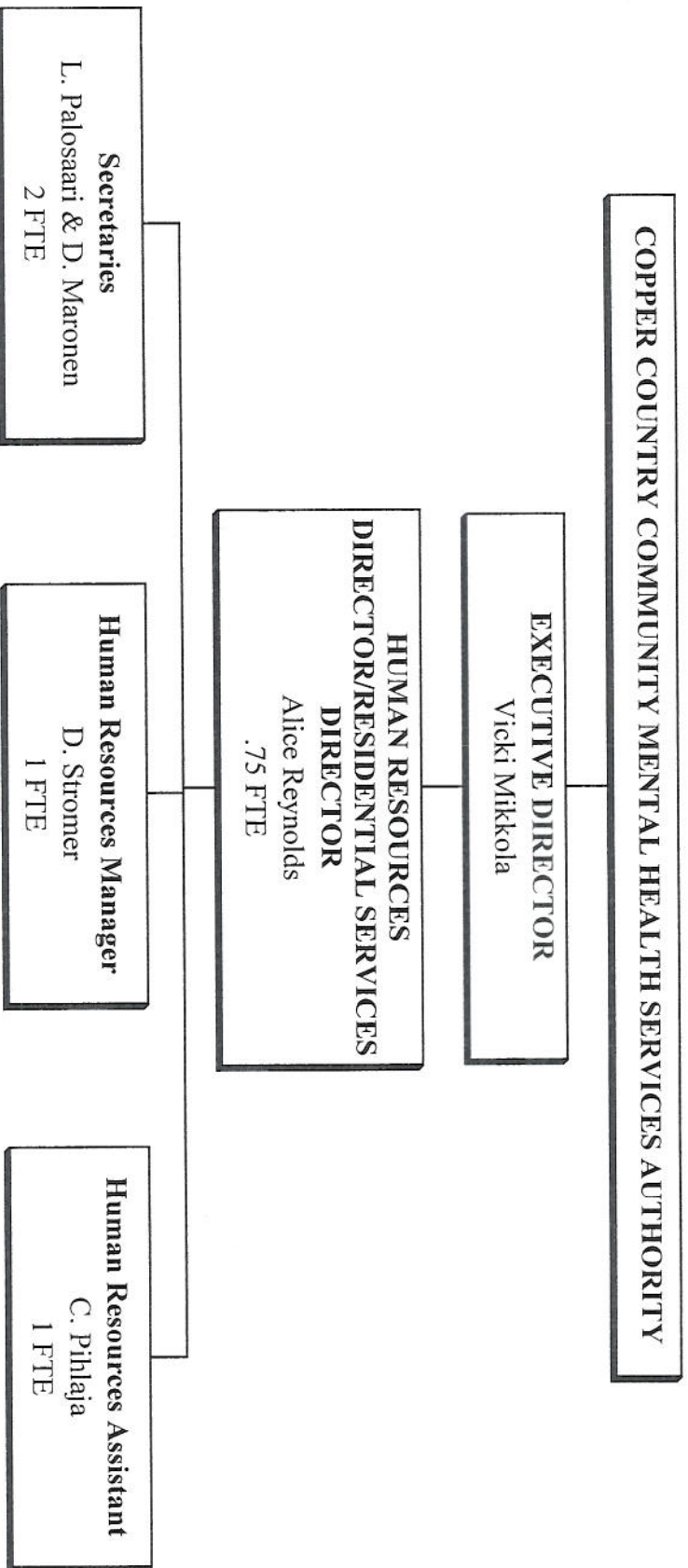
CCCMHSA ORGANIZATIONAL CHART - APRIL, 2014
BEHAVIORAL SERVICES



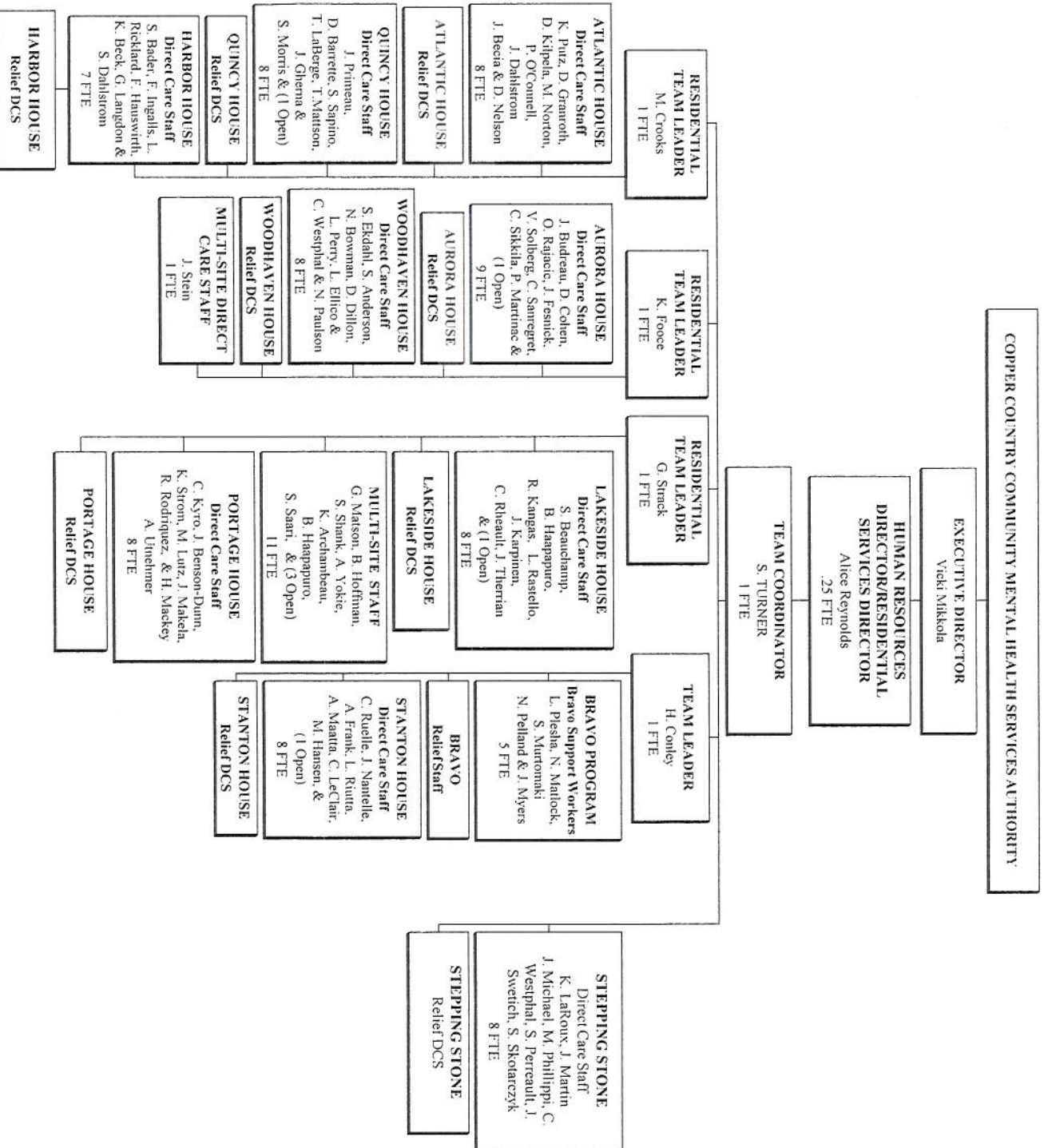
CCCMHSA ORGANIZATIONAL CHART APRIL, 2014
FINANCIAL ADMINISTRATION / FACILITIES MANAGEMENT/INFORMATION SERVICES



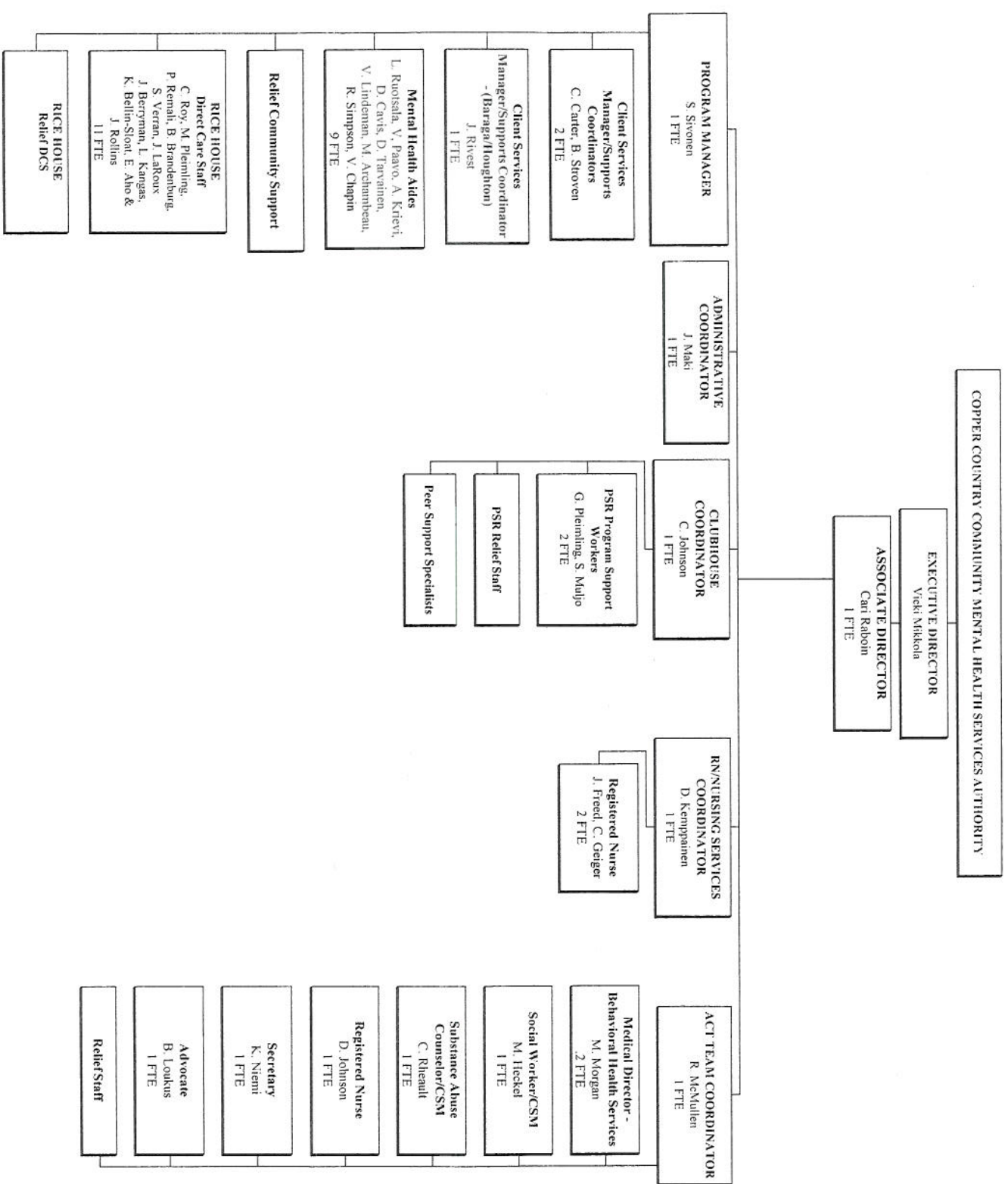
CCCMHSA ORGANIZATIONAL CHART - APRIL, 2014
ADMINISTRATIVE SERVICES



CCCMHSA ORGANIZATIONAL CHART - APRIL, 2014
RESIDENTIAL SERVICES

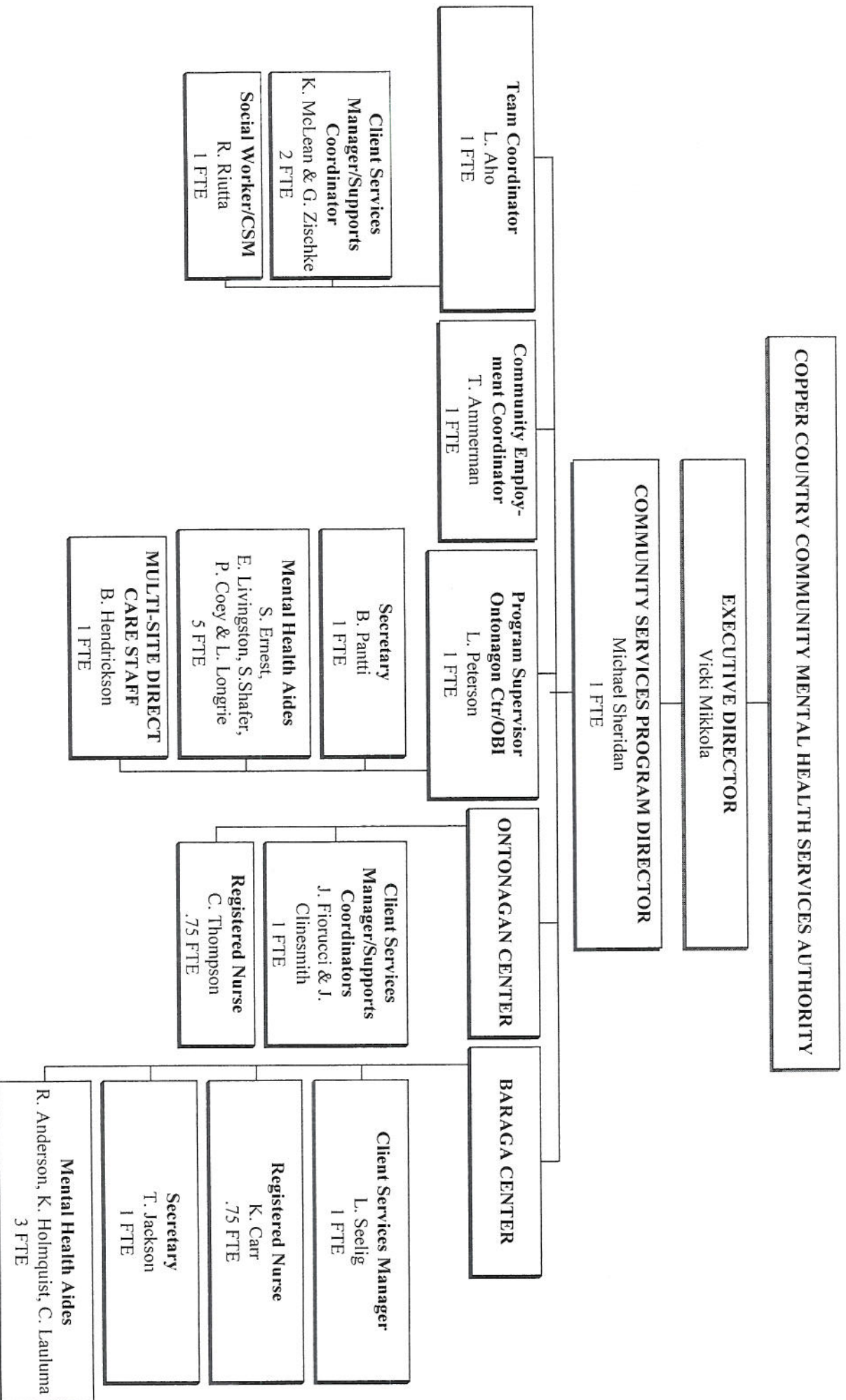


CCCMHSA ORGANIZATIONAL CHART - APRIL, 2014
COMMUNITY SERVICES

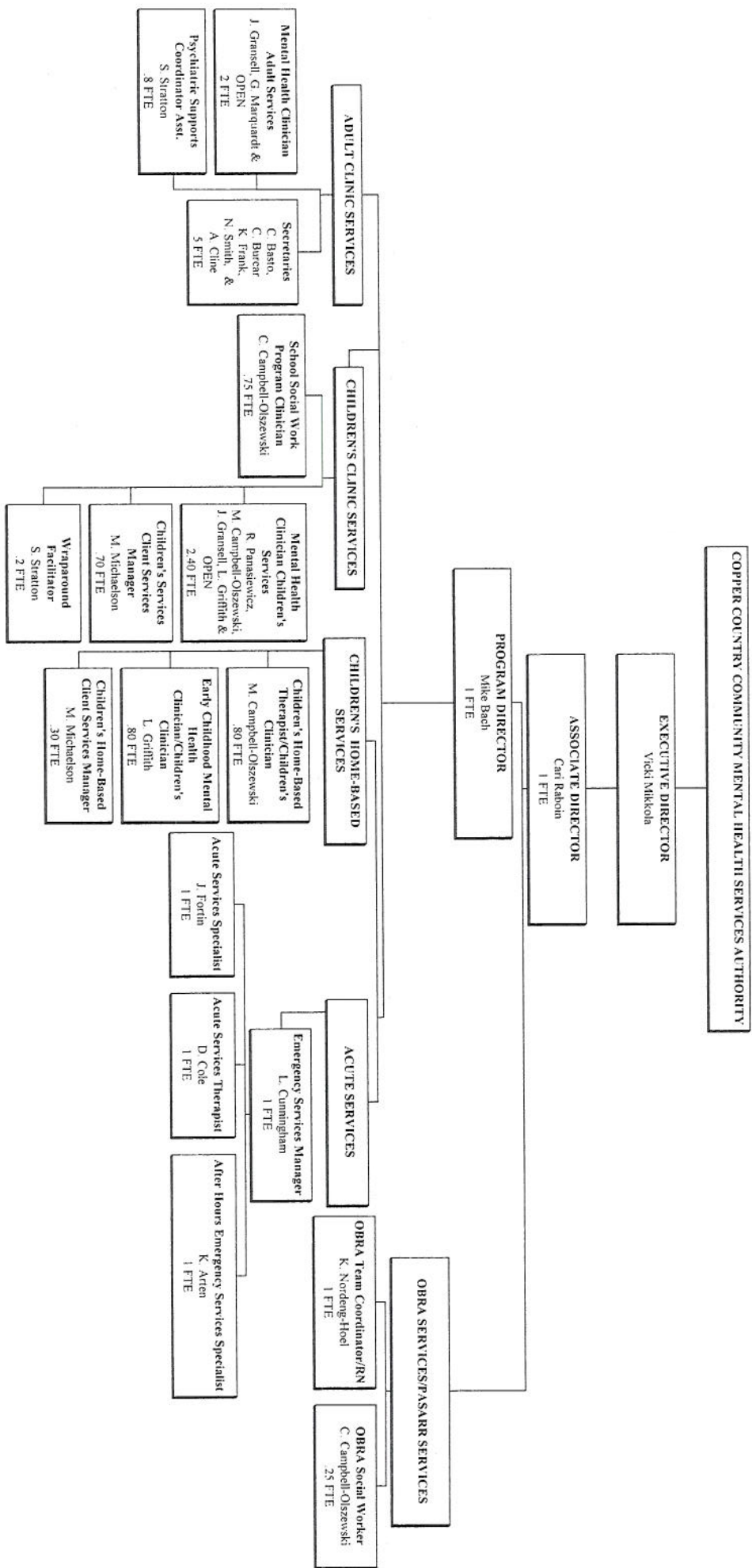


CCCMHSA ORGANIZATIONAL CHART - APRIL, 2014

COMMUNITY SERVICES

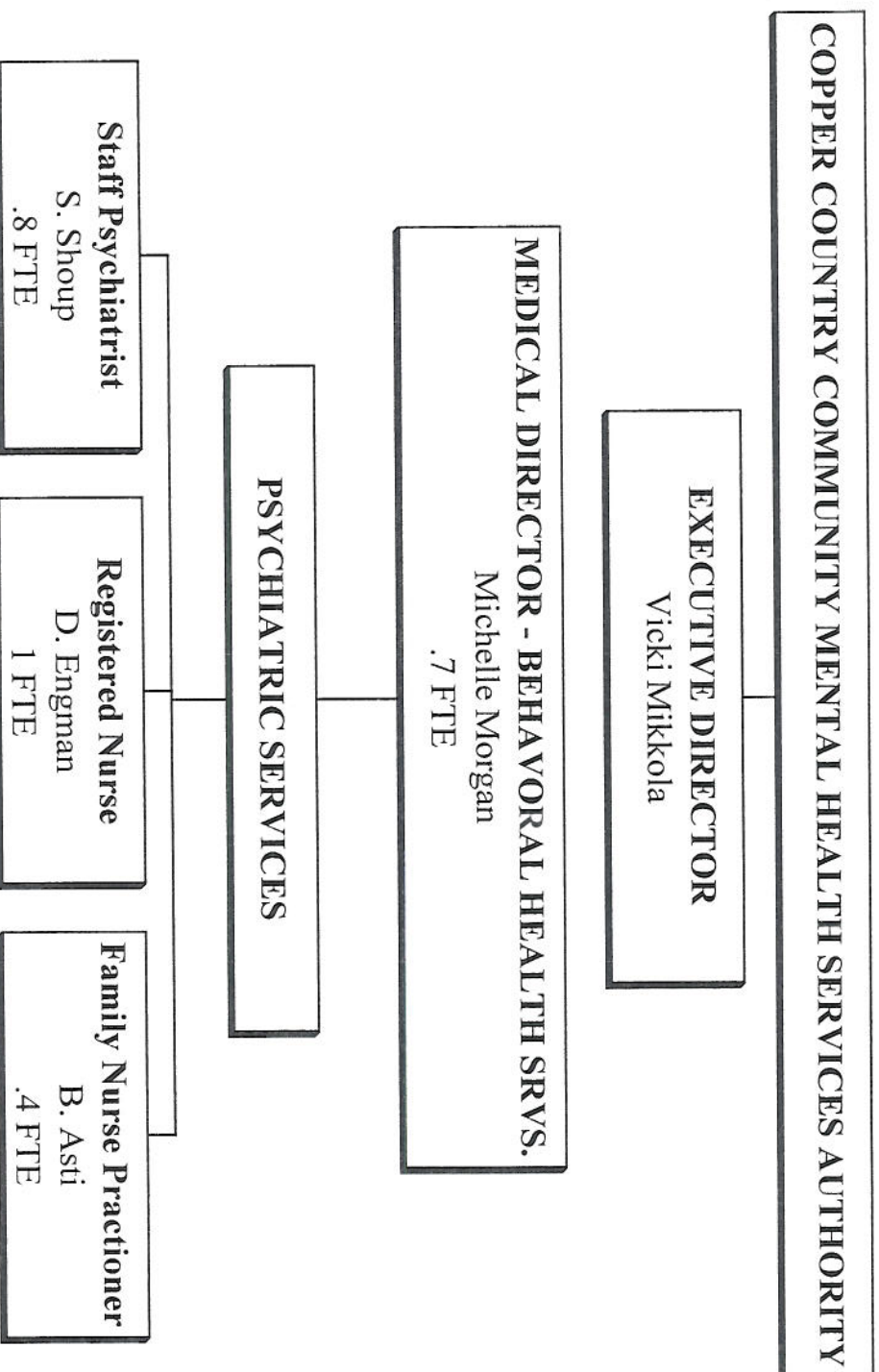


CCCMHSA ORGANIZATIONAL CHART - APRIL, 2014
 CLINIC & OBRA/PASARR SERVICES



CCCMHSA ORGANIZATIONAL CHART -APRIL, 2014

PSYCHIATRIC SERVICES



CCCMHSA ORGANIZATIONAL CHART - APRIL, 2014
THE INSTITUTE

