

Copper Country Community Mental Health Services Authority

ORGANIZATIONAL CHART

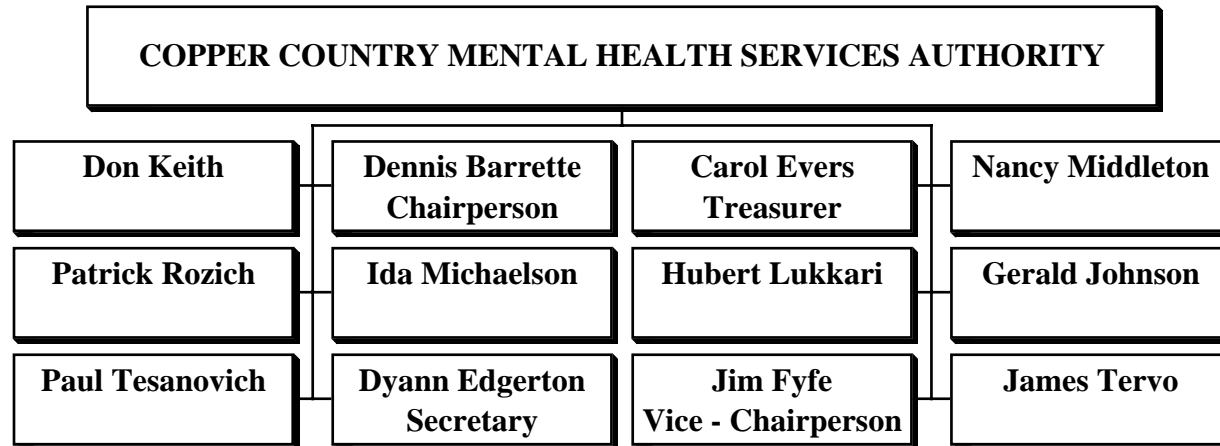
November, 2009

It is the mission of Copper Country Community Mental Health Services Authority to ensure that appropriate, cost-effective, and quality behavioral health services are accessible to persons in Baraga, Houghton, Keweenaw, and Ontonagon counties.

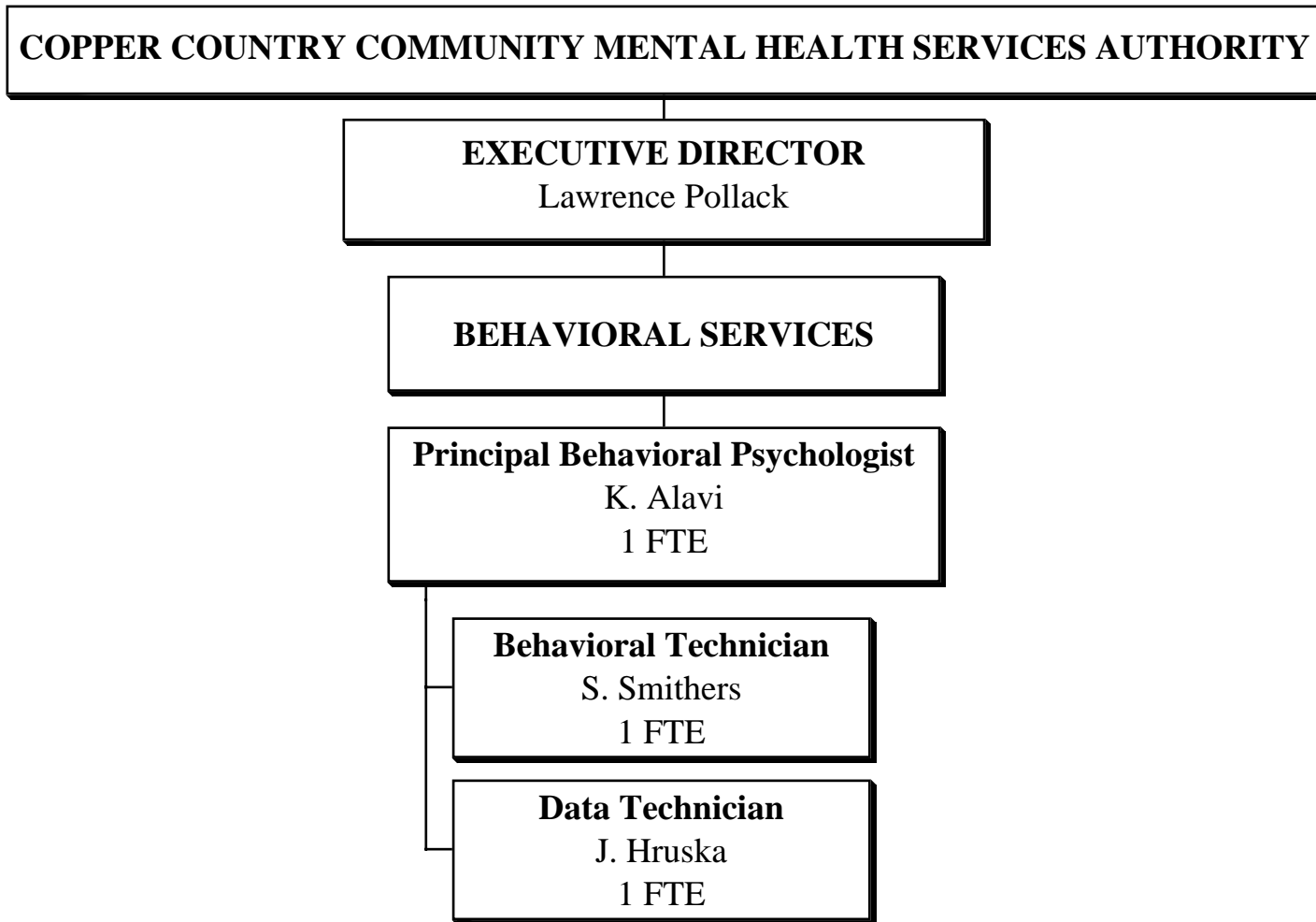
In the service of its mission, Copper Country Mental Health will strive to provide a comprehensive array of behavioral health services for persons living within its four county catchment area. The continuum of services are intended to increase independence, improve quality of life, and support community integration and inclusion. Service is tailored to the needs and strengths of consumers.

CCCMHSA ORGANIZATIONAL CHART - November, 2009

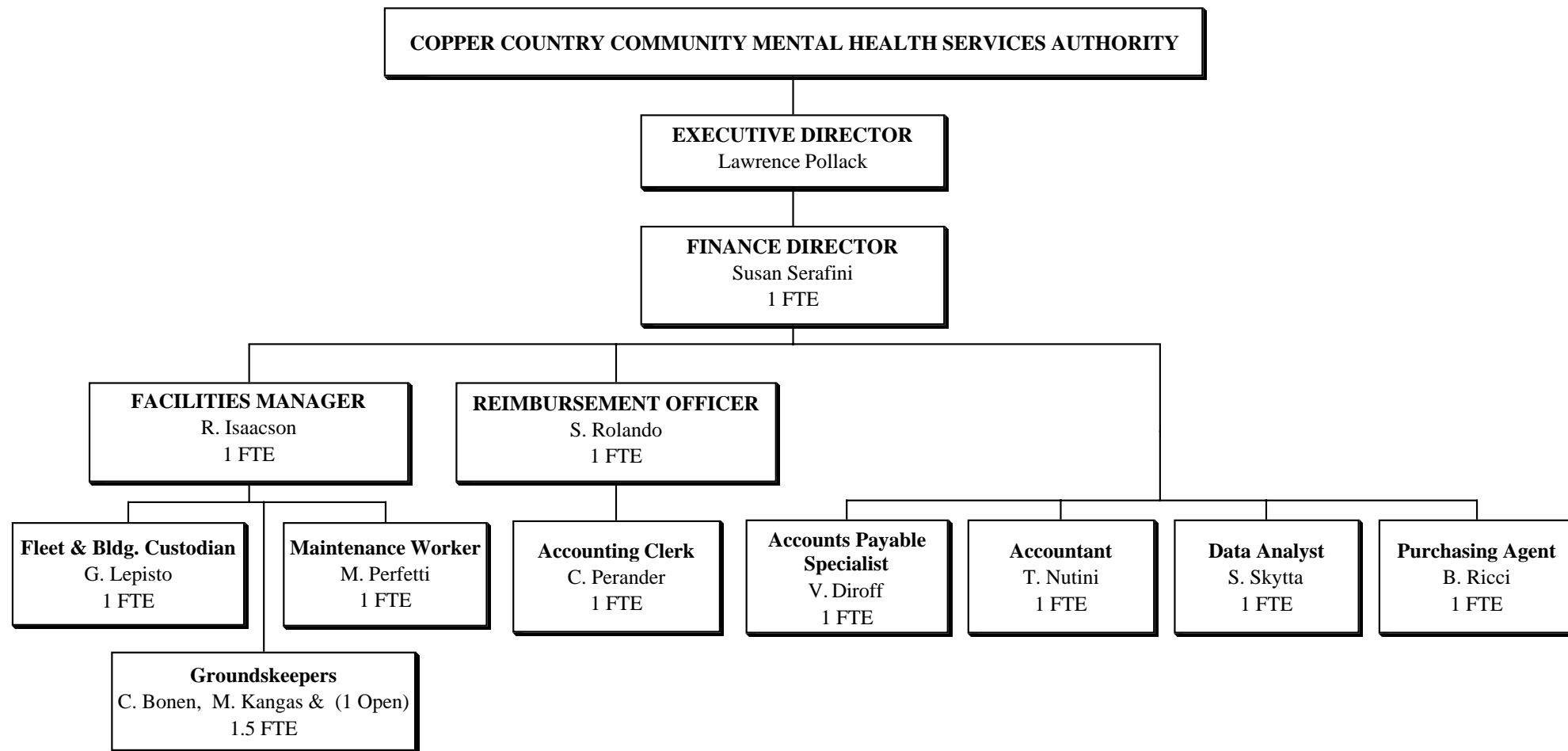
BOARD STRUCTURE



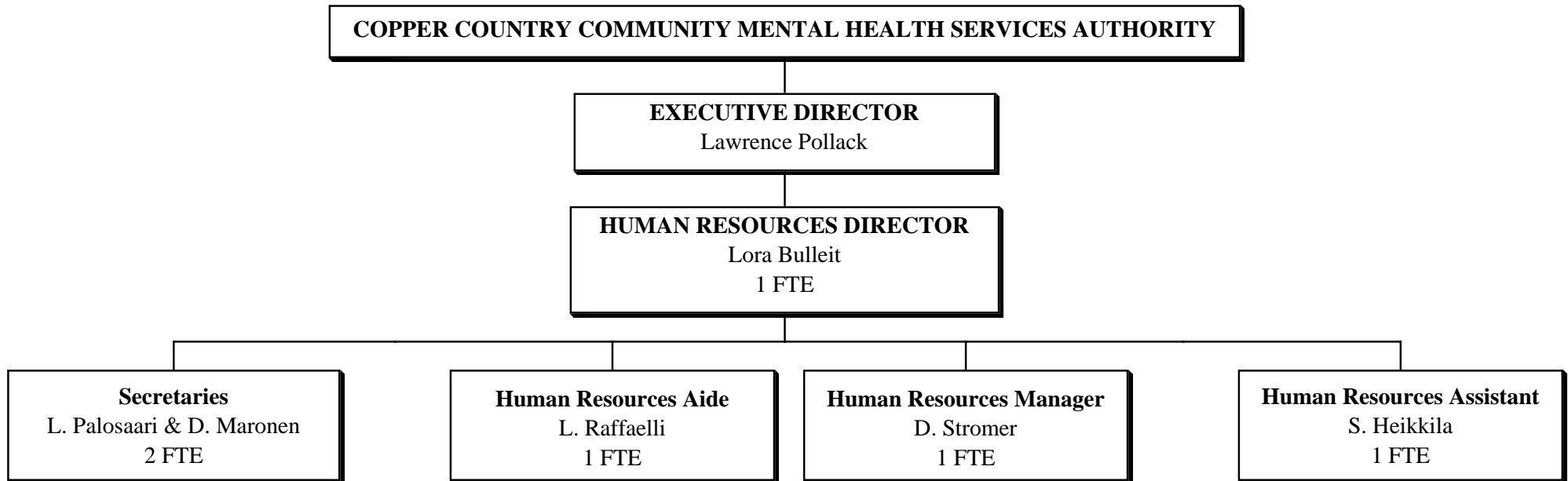
CCCMHSA ORGANIZATIONAL CHART - November, 2009
BEHAVIORAL SERVICES



CCCMHSA ORGANIZATIONAL CHART - November, 2009
FINANCIAL ADMINISTRATION / MAINTENANCE



CCCMHSA ORGANIZATIONAL CHART - November, 2009
ADMINISTRATIVE SERVICES

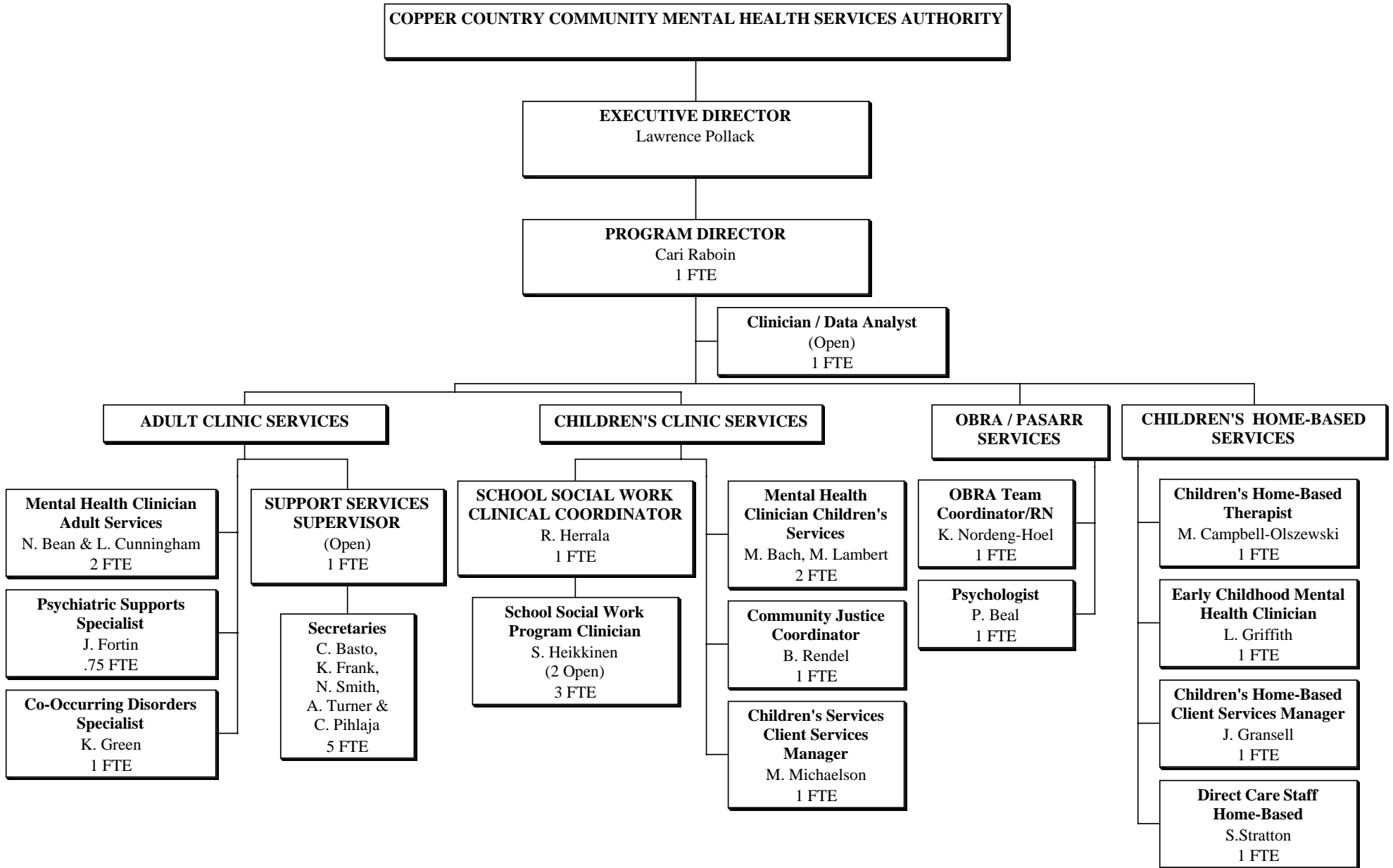


CCCMHSA ORGANIZATIONAL CHART - November, 2009
ADMINISTRATIVE SERVICES

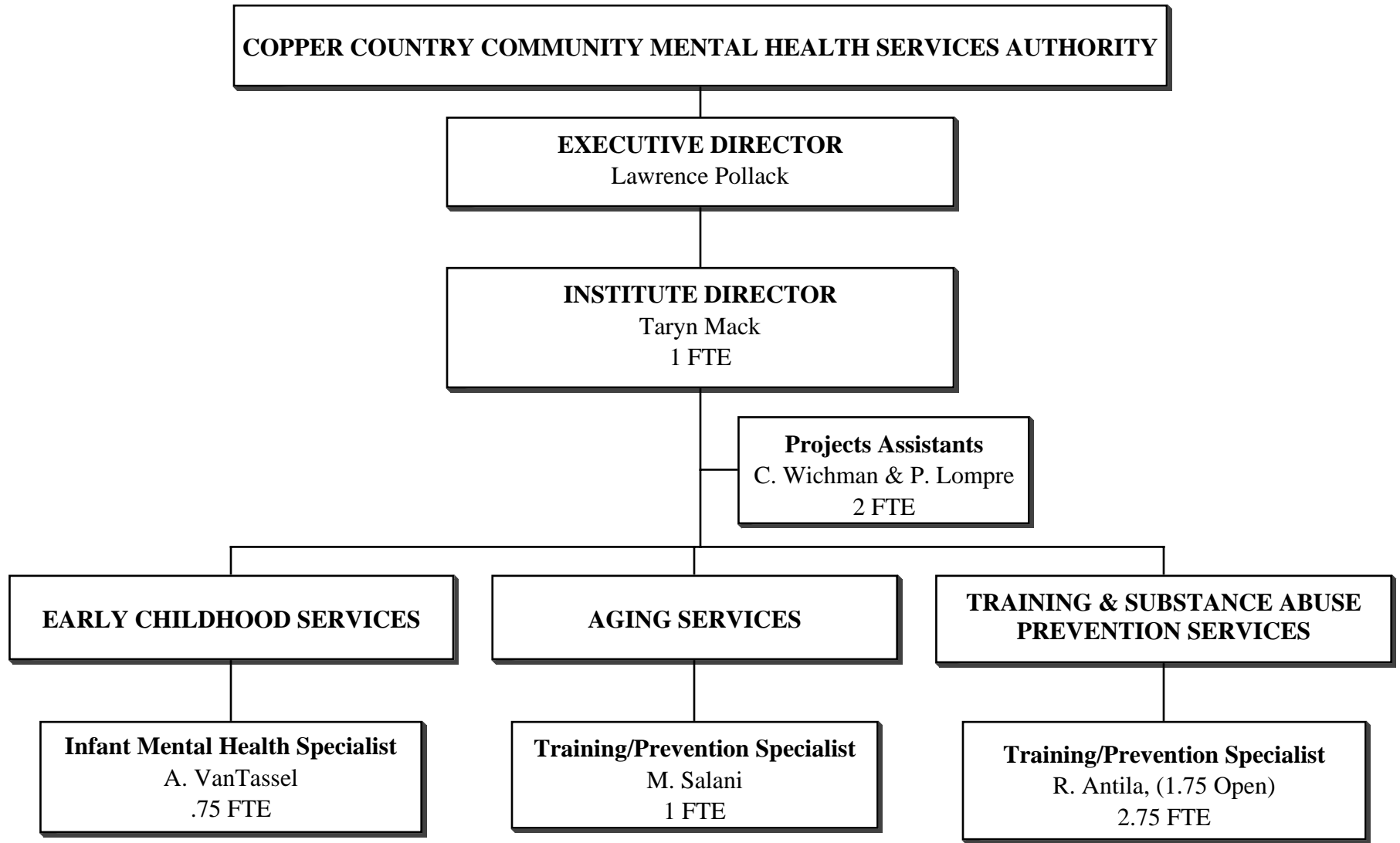


CCCMHSA ORGANIZATIONAL CHART - November, 2009

CLINIC & OBRA/PASARR SERVICES

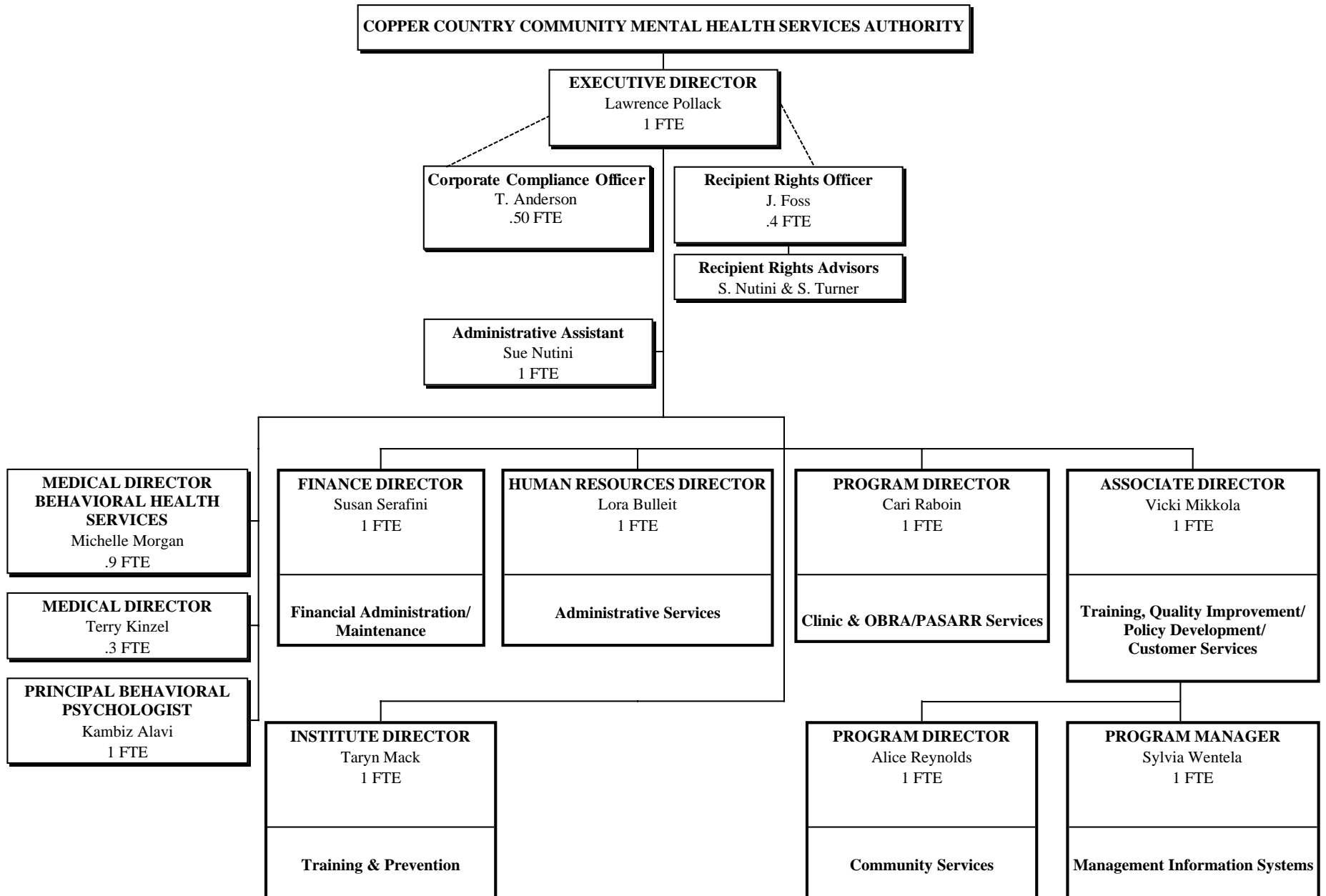


CCCMHSA ORGANIZATIONAL CHART - November, 2009
THE INSTITUTE



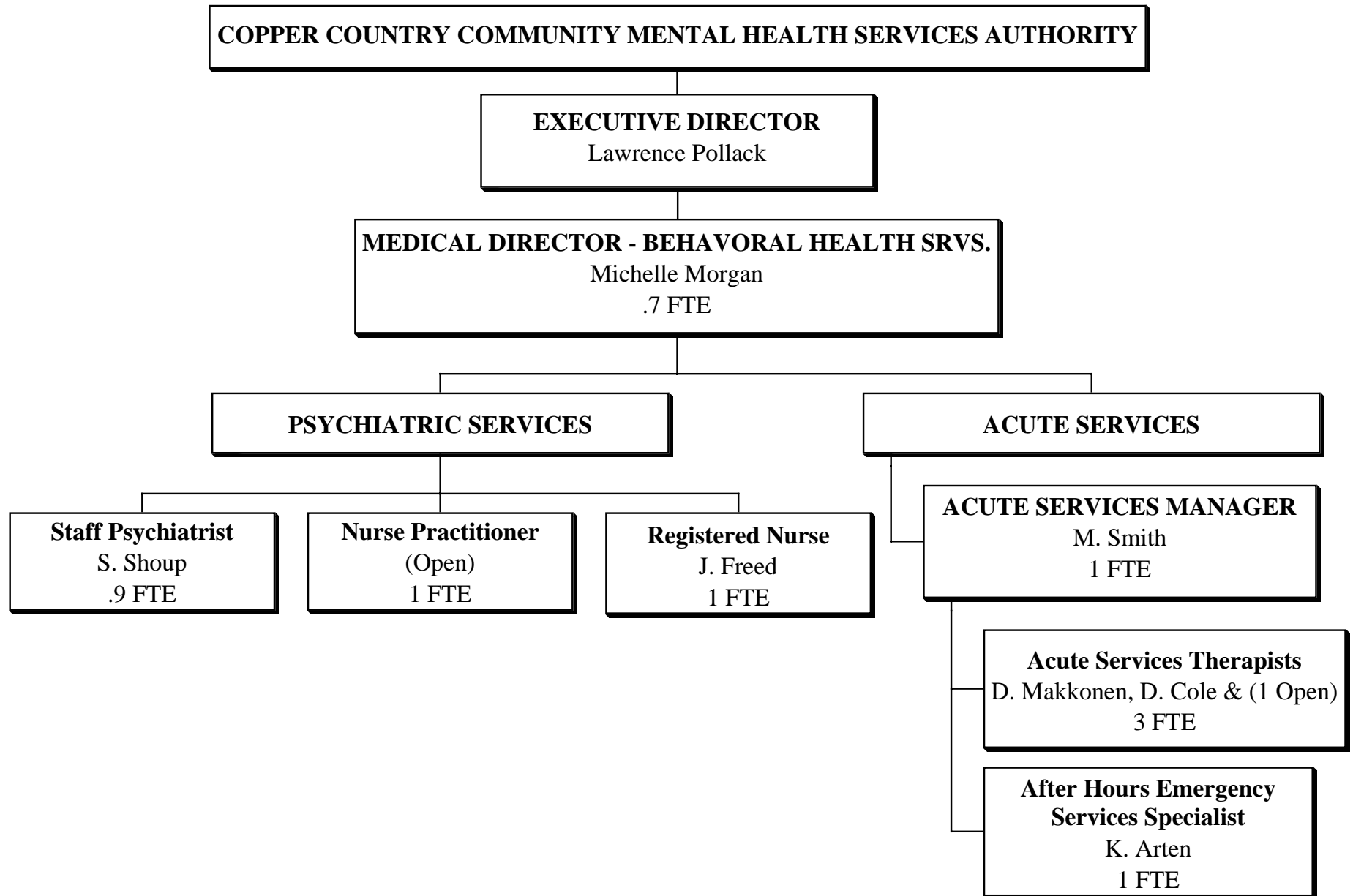
CCCMHSA ORGANIZATIONAL CHART - November, 2009

MANAGEMENT STRUCTURE

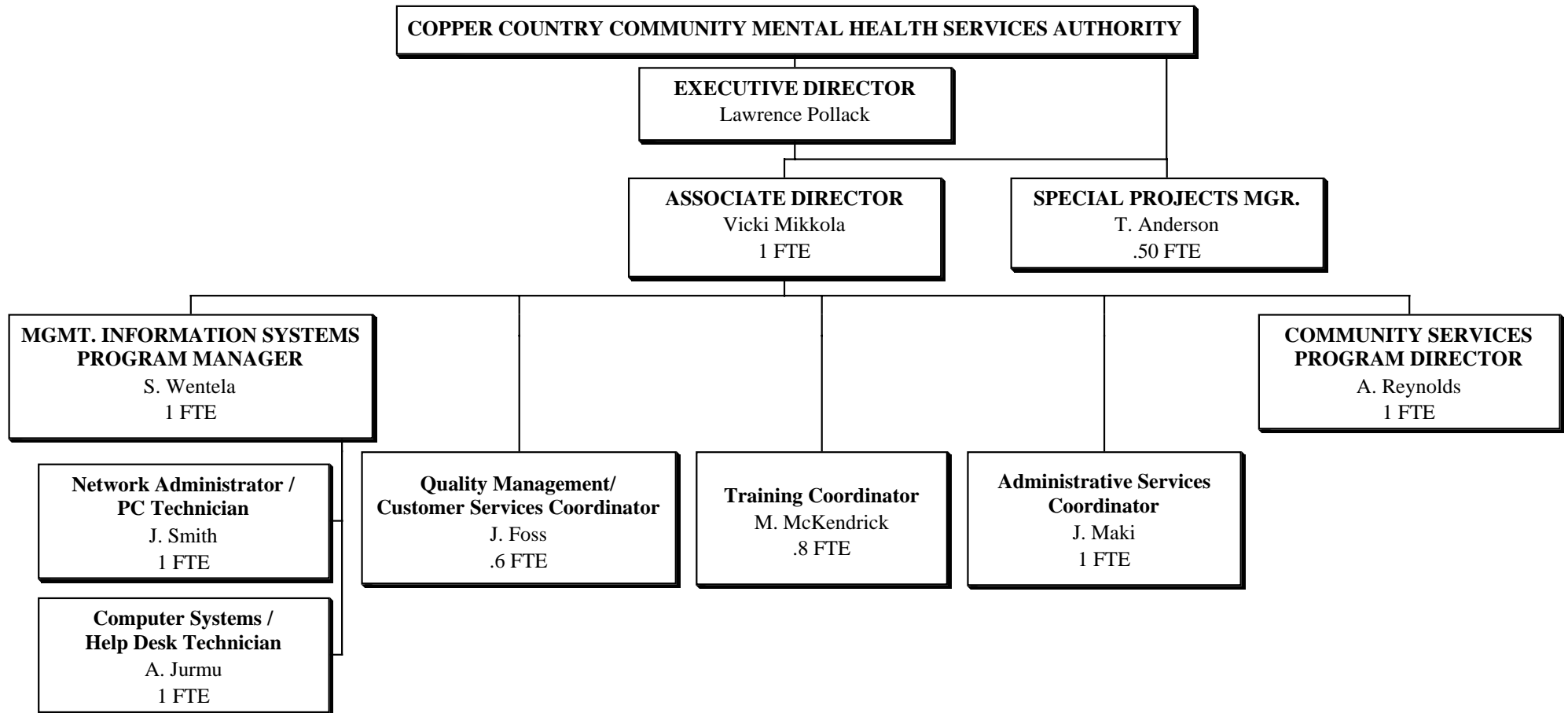


CCCMHSA ORGANIZATIONAL CHART - November, 2009

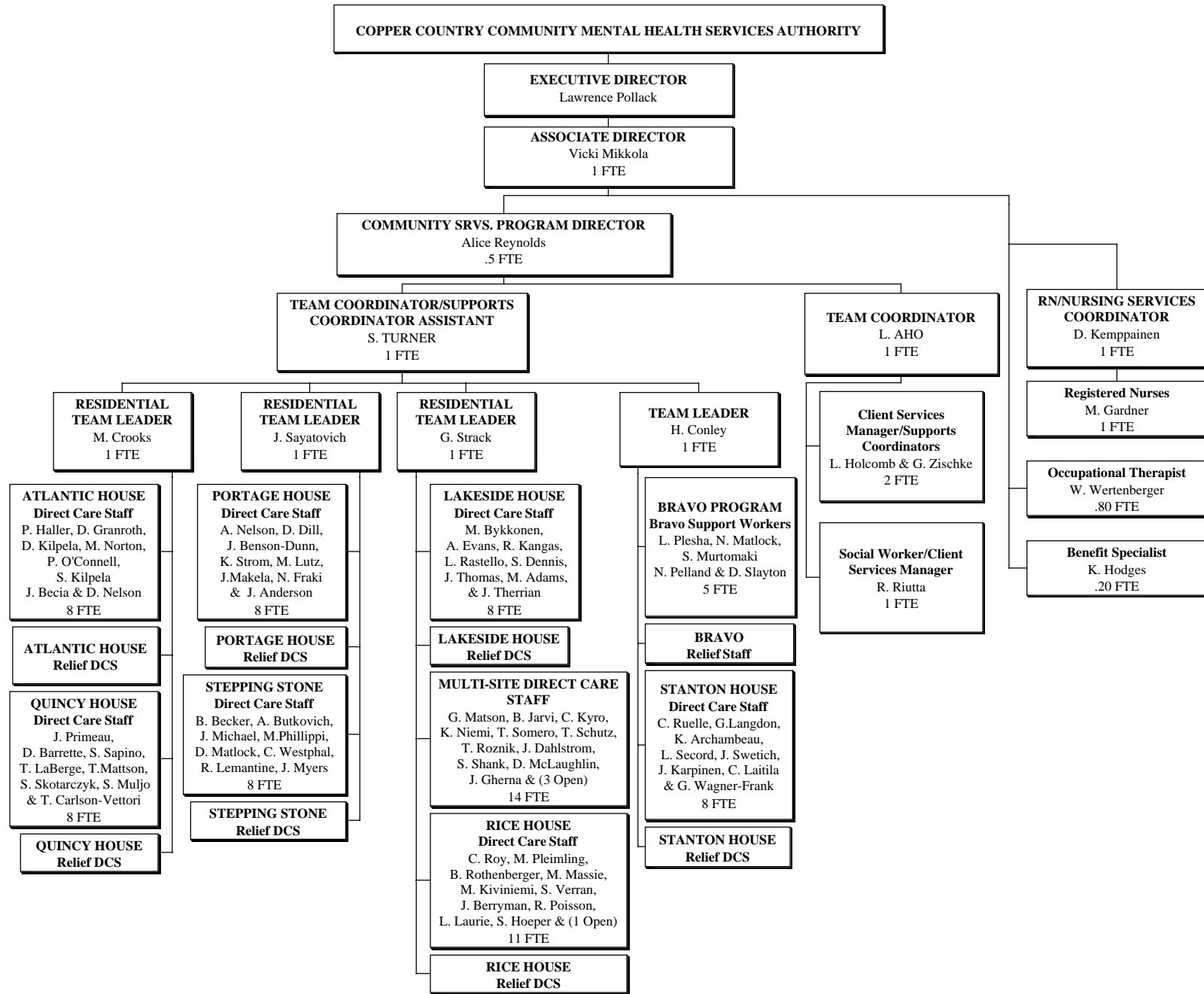
PSYCHIATRIC / ACUTE SERVICES



CCCMHSA ORGANIZATIONAL CHART - November, 2009
TRAINING, QUALITY IMPROVEMENT / POLICY DEVELOPMENT /
CUSTOMER SERVICES / MANAGEMENT INFORMATION SERVICES



**CCCMHSA ORGANIZATIONAL CHART - November, 2009
COMMUNITY SERVICES**



**CCCMHSA ORGANIZATIONAL CHART - November, 2009
COMMUNITY SERVICES**

