

Copper Country Community Mental Health Services Authority

ORGANIZATIONAL CHART

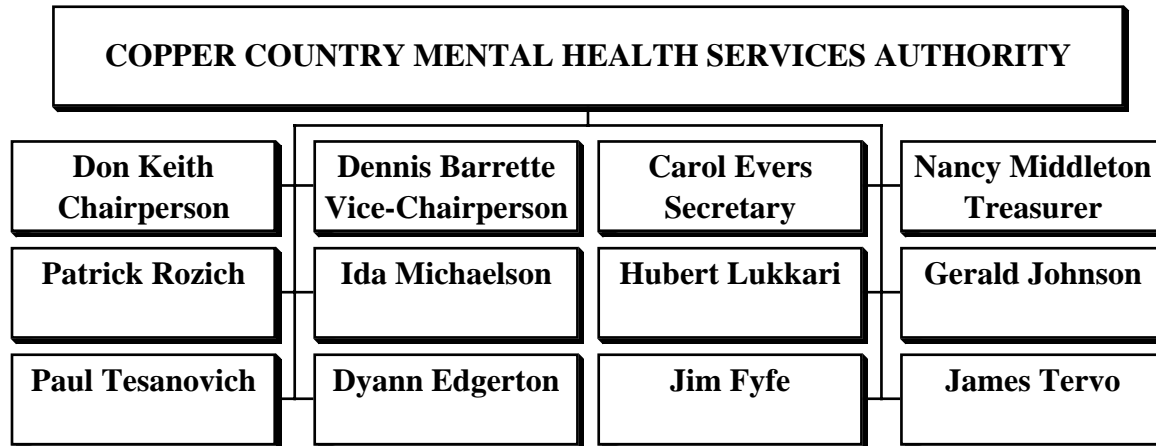
November, 2008

It is the mission of Copper Country Community Mental Health Services Authority to ensure that appropriate, cost-effective, and quality behavioral health services are accessible to persons in Baraga, Houghton, Keweenaw, and Ontonagon counties.

In the service of its mission, Copper Country Mental Health will strive to provide a comprehensive array of behavioral health services for persons living within its four county catchment area. The continuum of services are intended to increase independence, improve quality of life, and support community integration and inclusion. Service is tailored to the needs and strengths of consumers.

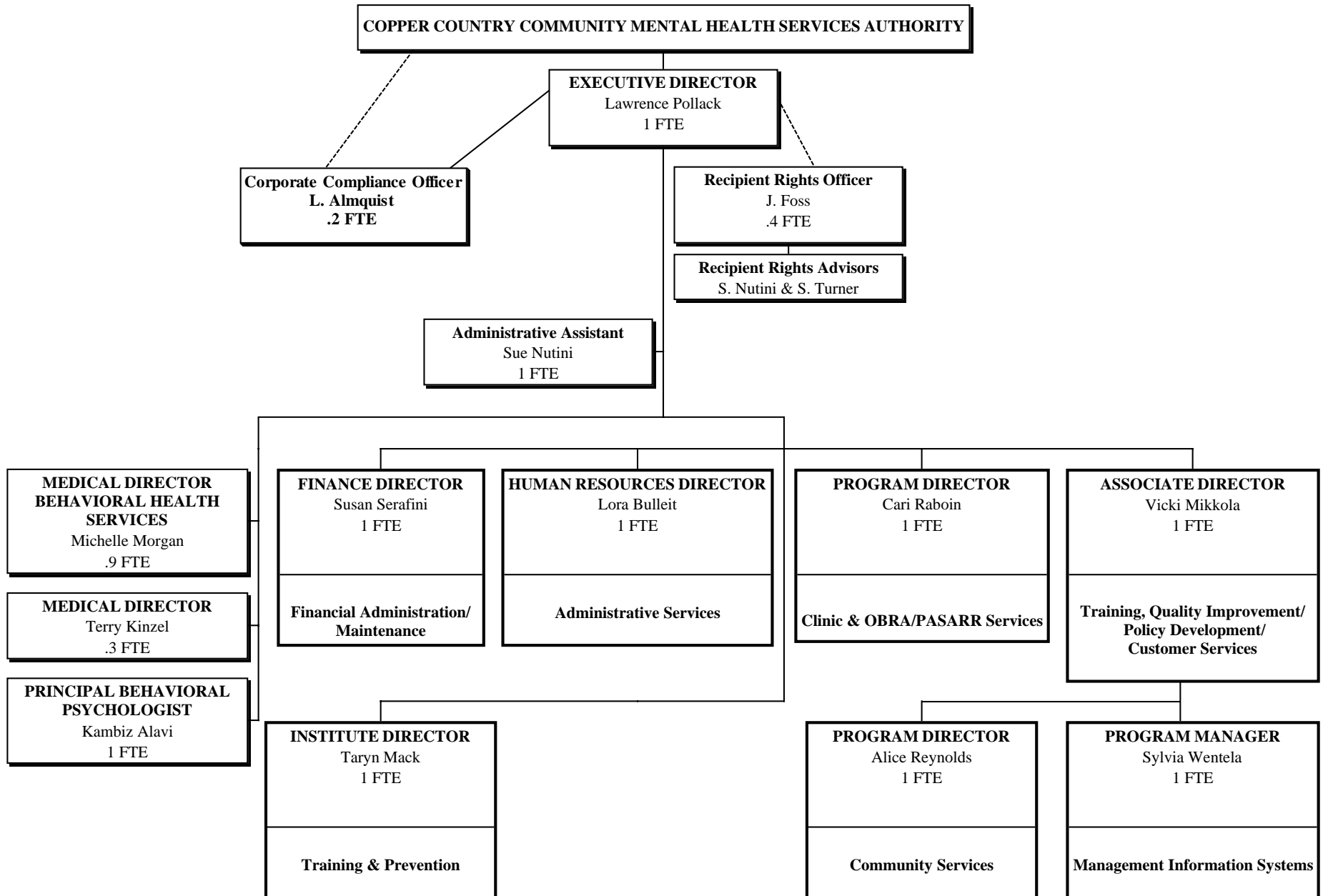
CCCMHSA ORGANIZATIONAL CHART - November, 2008

BOARD STRUCTURE

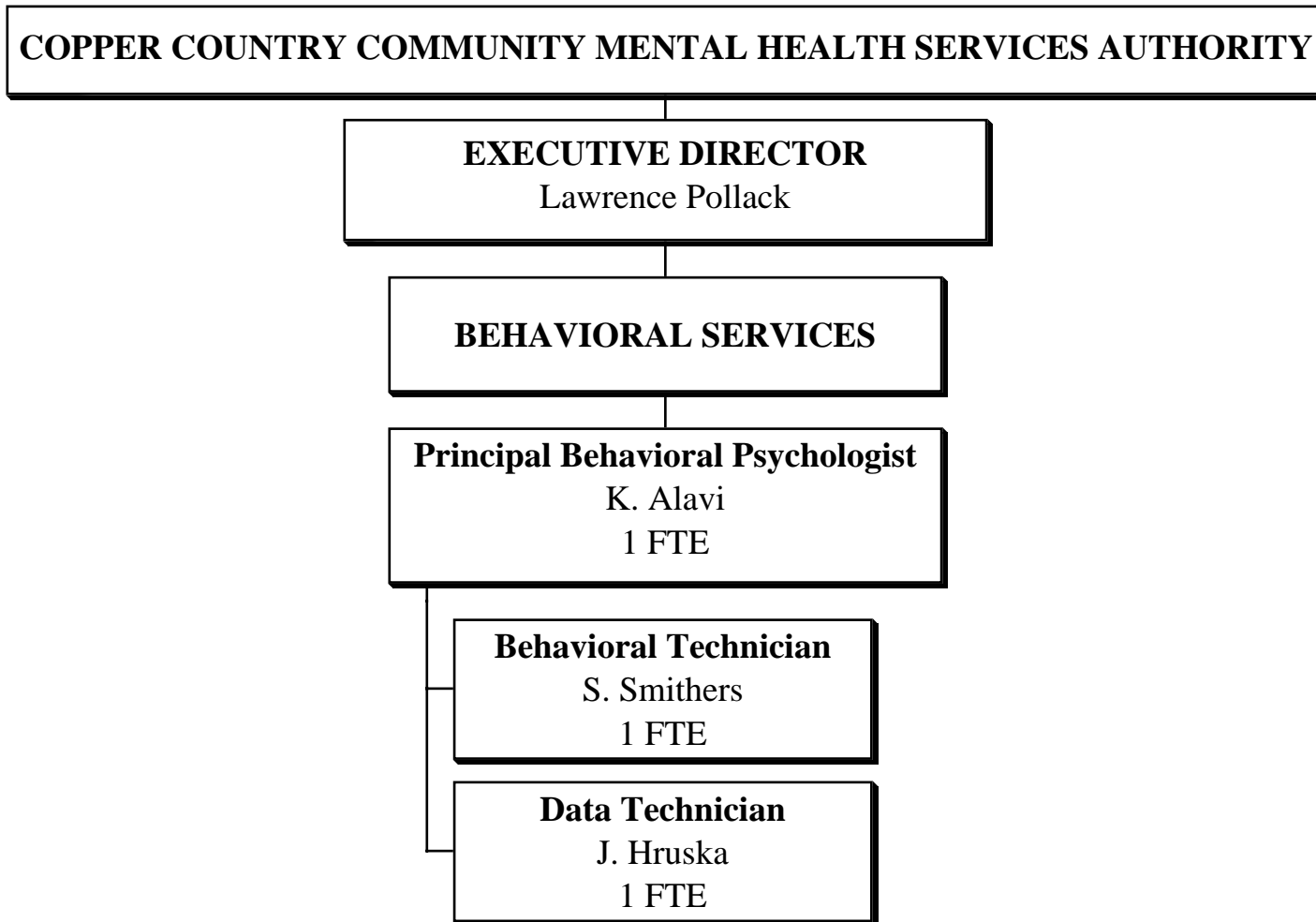


CCCMHSA ORGANIZATIONAL CHART - November, 2008

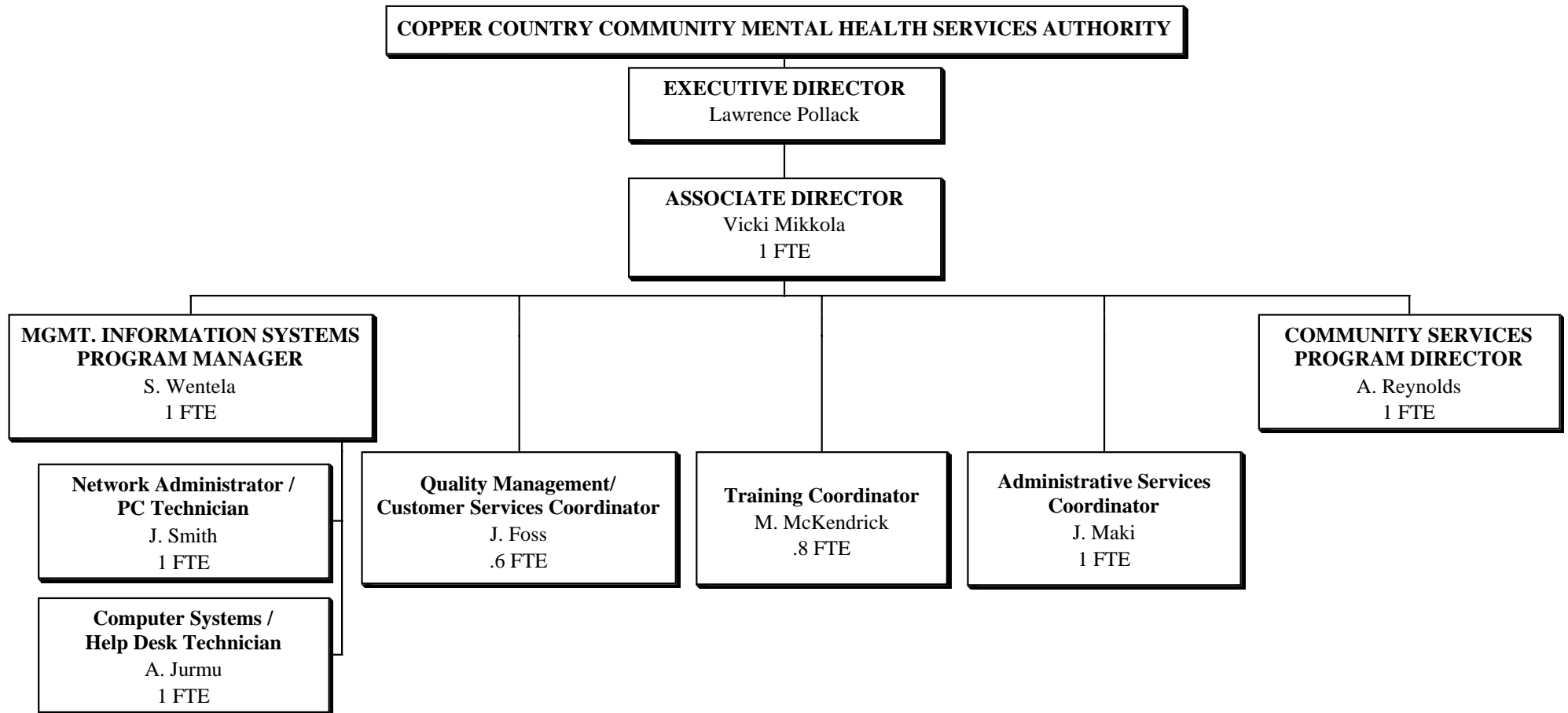
MANAGEMENT STRUCTURE



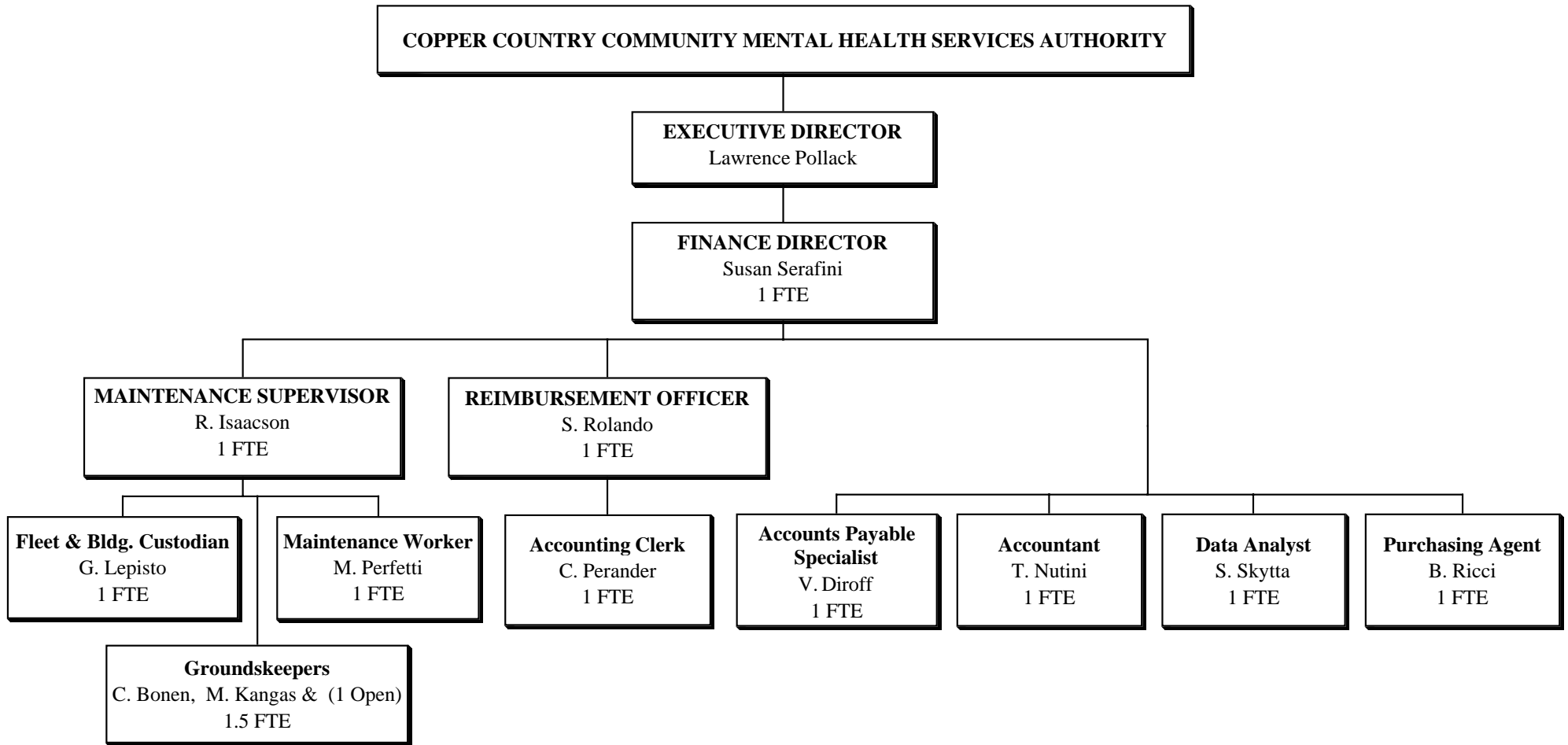
CCCMHSA ORGANIZATIONAL CHART - November, 2008
BEHAVIORAL SERVICES



CCCMHSA ORGANIZATIONAL CHART - November, 2008
TRAINING, QUALITY IMPROVEMENT / POLICY DEVELOPMENT /
CUSTOMER SERVICES / MANAGEMENT INFORMATION SERVICES



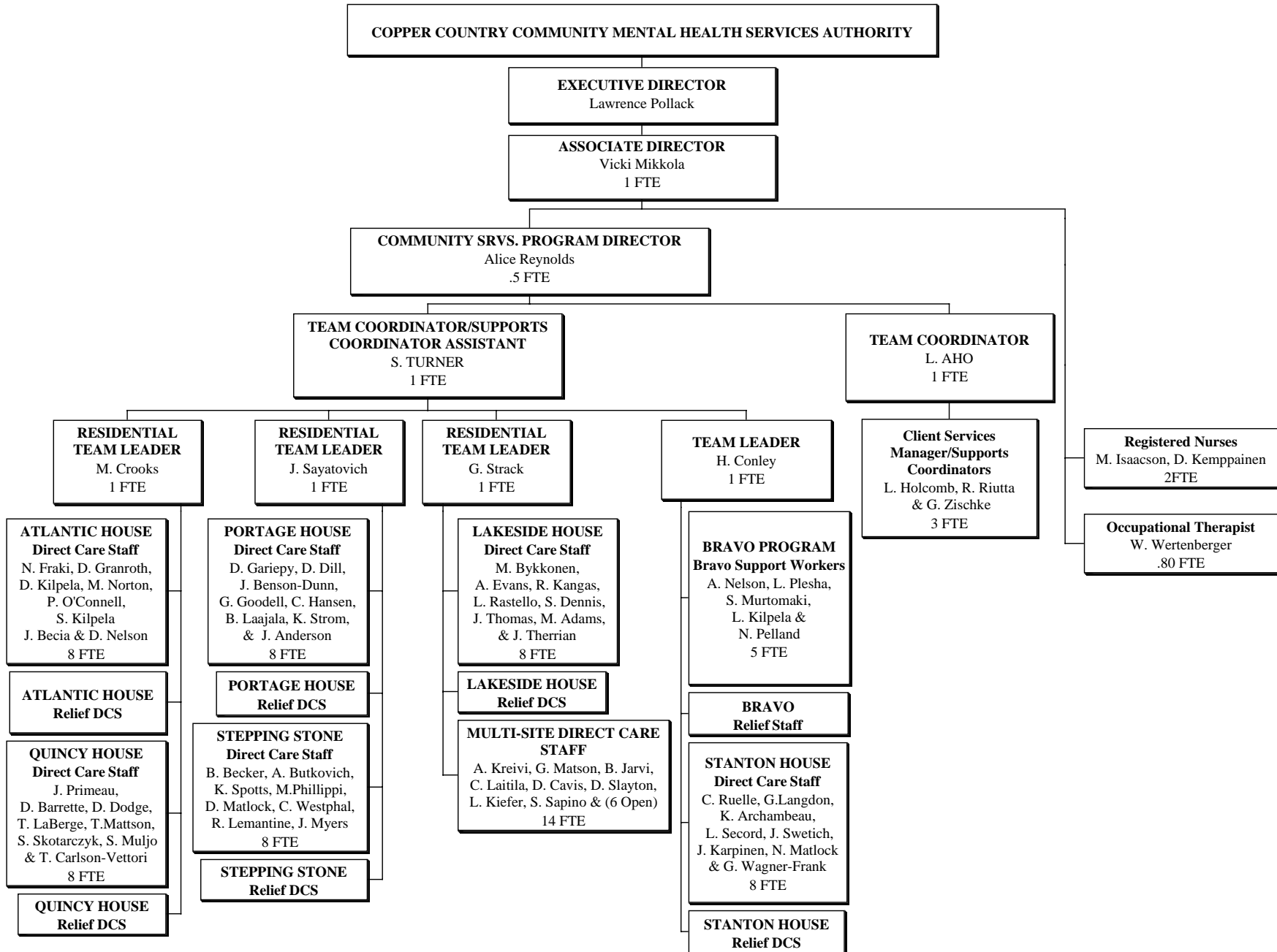
CCCMHSA ORGANIZATIONAL CHART - November, 2008
FINANCIAL ADMINISTRATION / MAINTENANCE



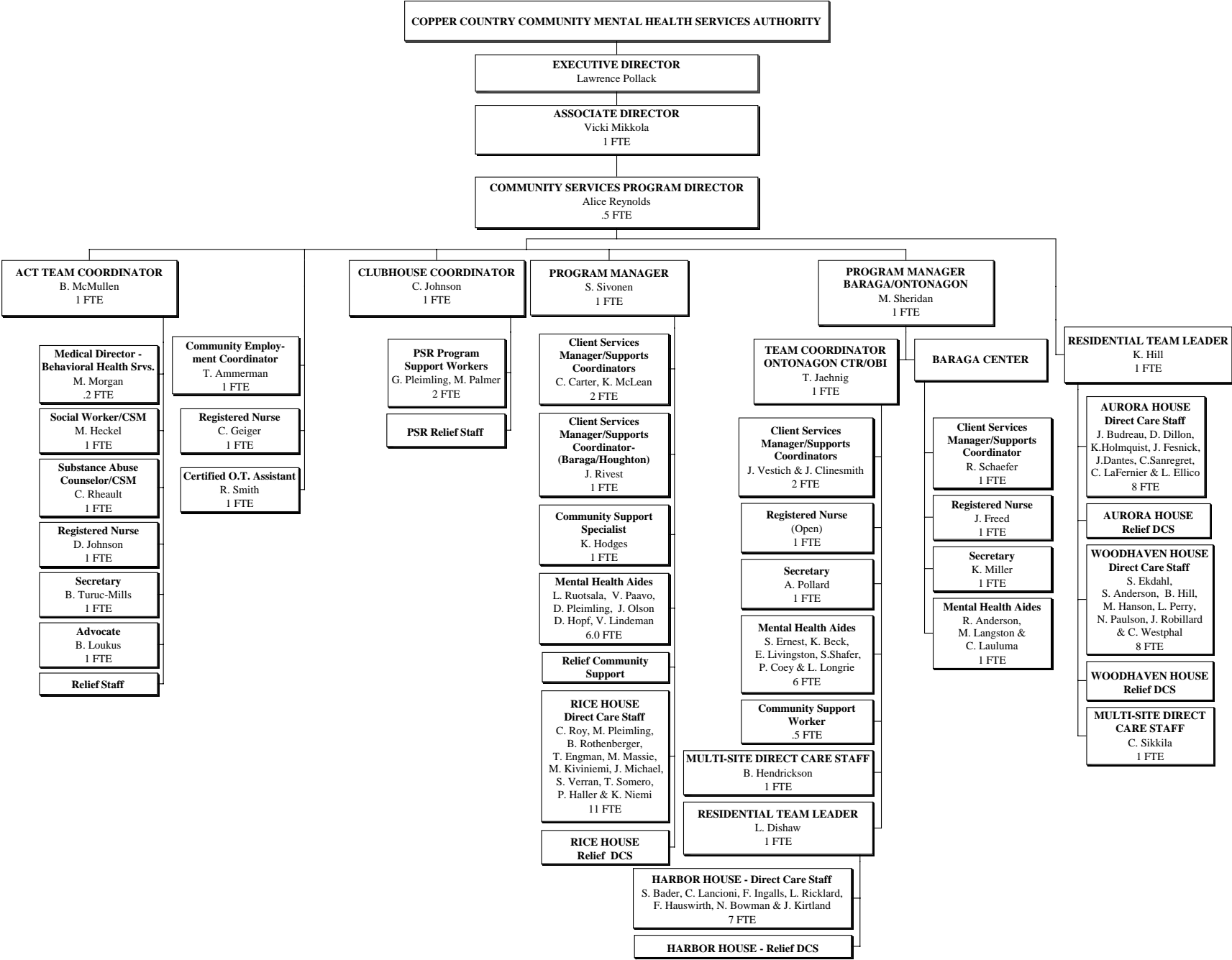
CCCMHSA ORGANIZATIONAL CHART - November, 2008
ADMINISTRATIVE SERVICES



**CCCMHSA ORGANIZATIONAL CHART - November, 2008
COMMUNITY SERVICES**

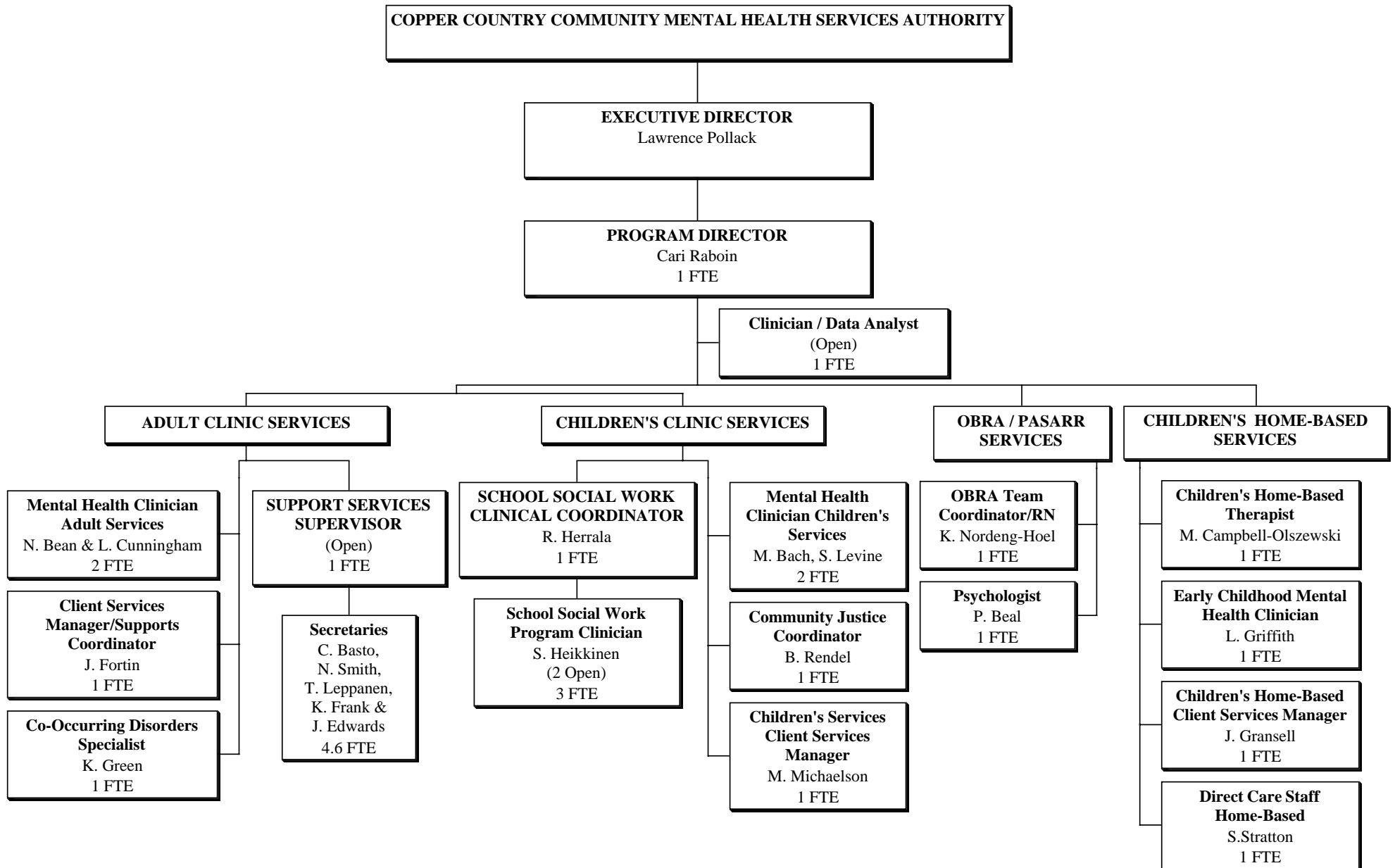


**CCCMHSA ORGANIZATIONAL CHART - November, 2008
COMMUNITY SERVICES**



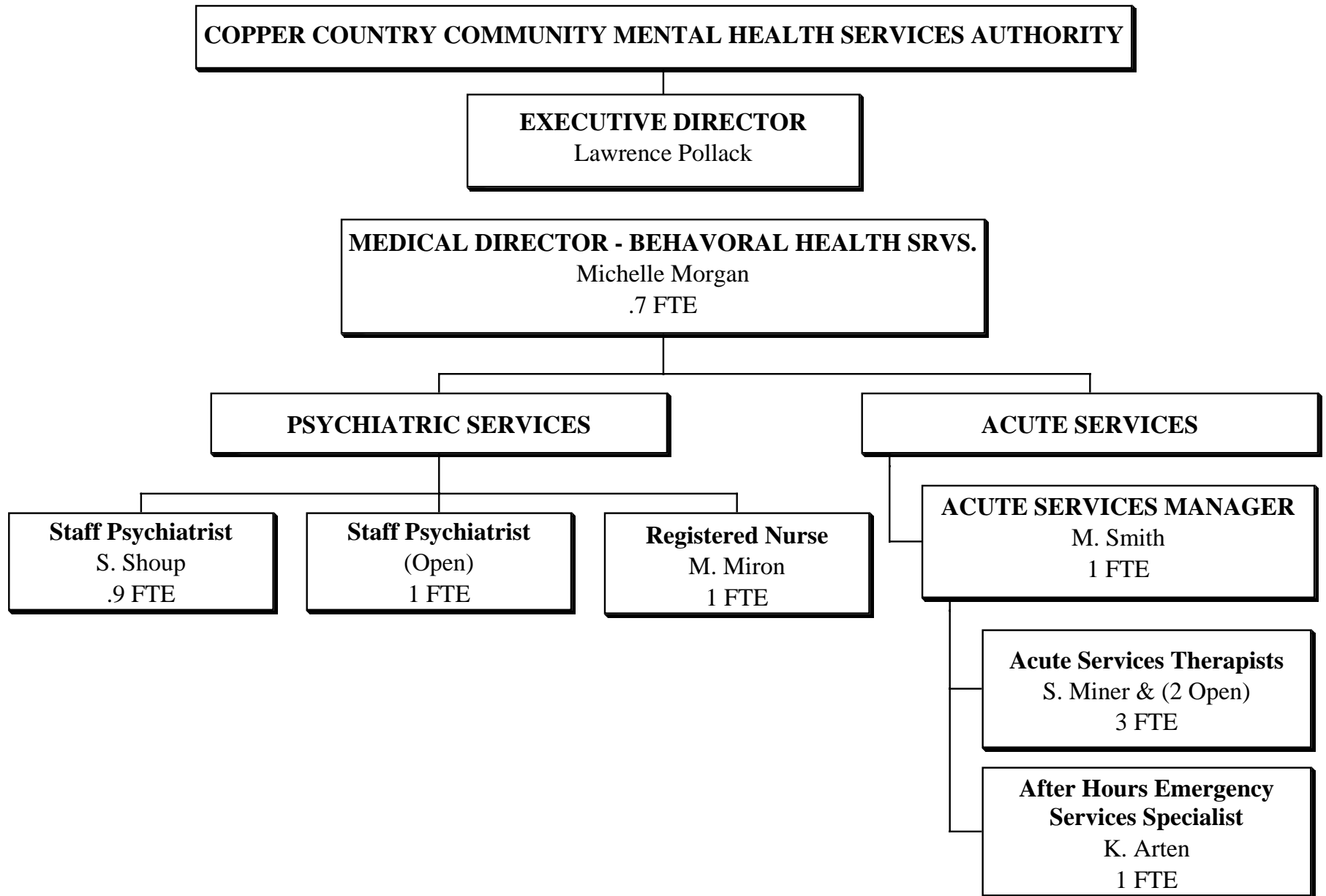
CCCMHSA ORGANIZATIONAL CHART - November, 2008

CLINIC & OBRA/PASARR SERVICES



CCCMHSA ORGANIZATIONAL CHART - November, 2008

PSYCHIATRIC / ACUTE SERVICES



CCCMHSA ORGANIZATIONAL CHART - November, 2008
THE INSTITUTE

