

# **Copper Country Community Mental Health Services Authority**

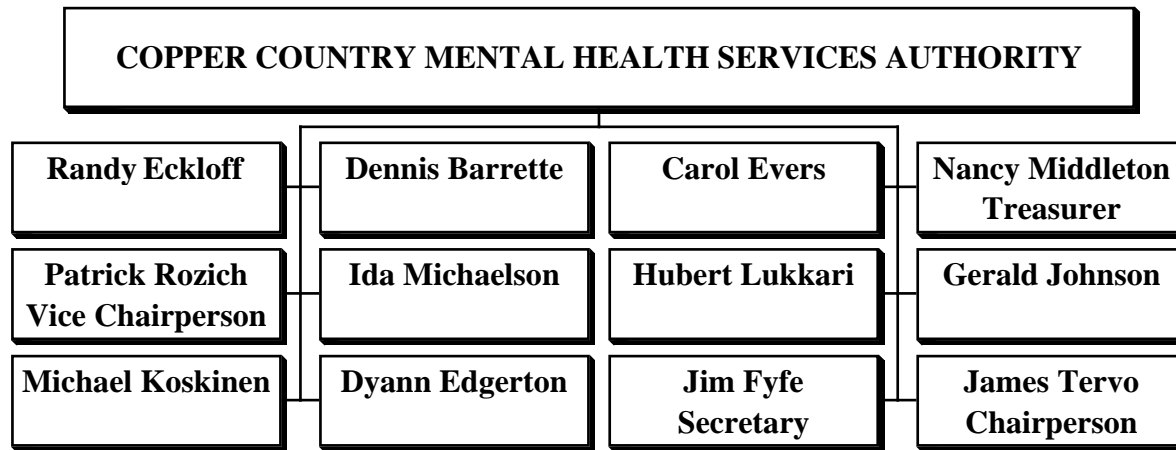
## **ORGANIZATIONAL CHART**

**October, 2011**

It is the mission of Copper Country Community Mental Health Services Authority to ensure that appropriate, cost-effective, and quality behavioral health services are accessible to persons in Baraga, Houghton, Keweenaw, and Ontonagon counties.

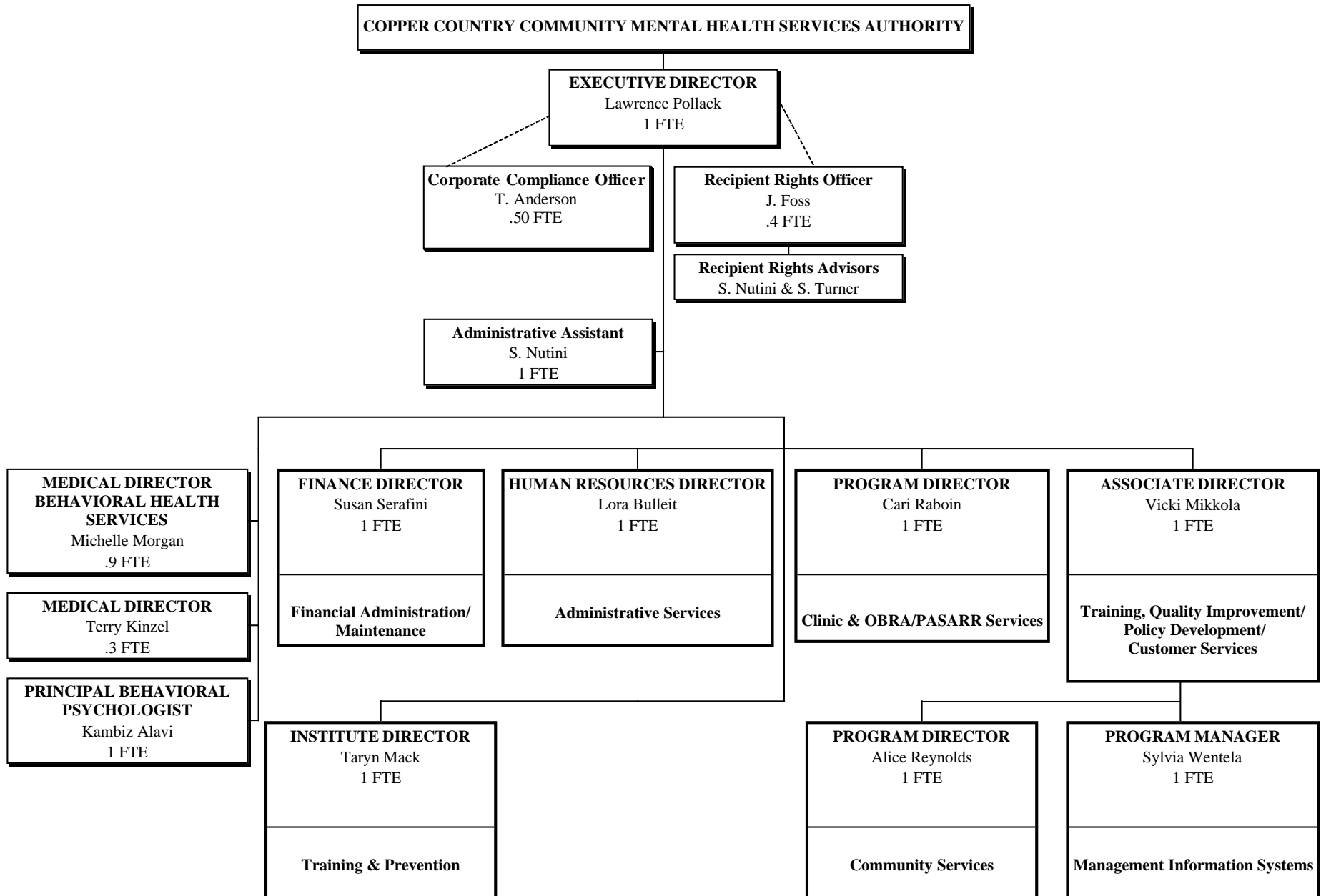
In the service of its mission, Copper Country Mental Health will strive to provide a comprehensive array of behavioral health services for persons living within its four county catchment area. The continuum of services are intended to increase independence, improve quality of life, and support community integration and inclusion. Service is tailored to the needs and strengths of consumers.

**CCCMHSA ORGANIZATIONAL CHART - OCTOBER,  
2011  
BOARD STRUCTURE**

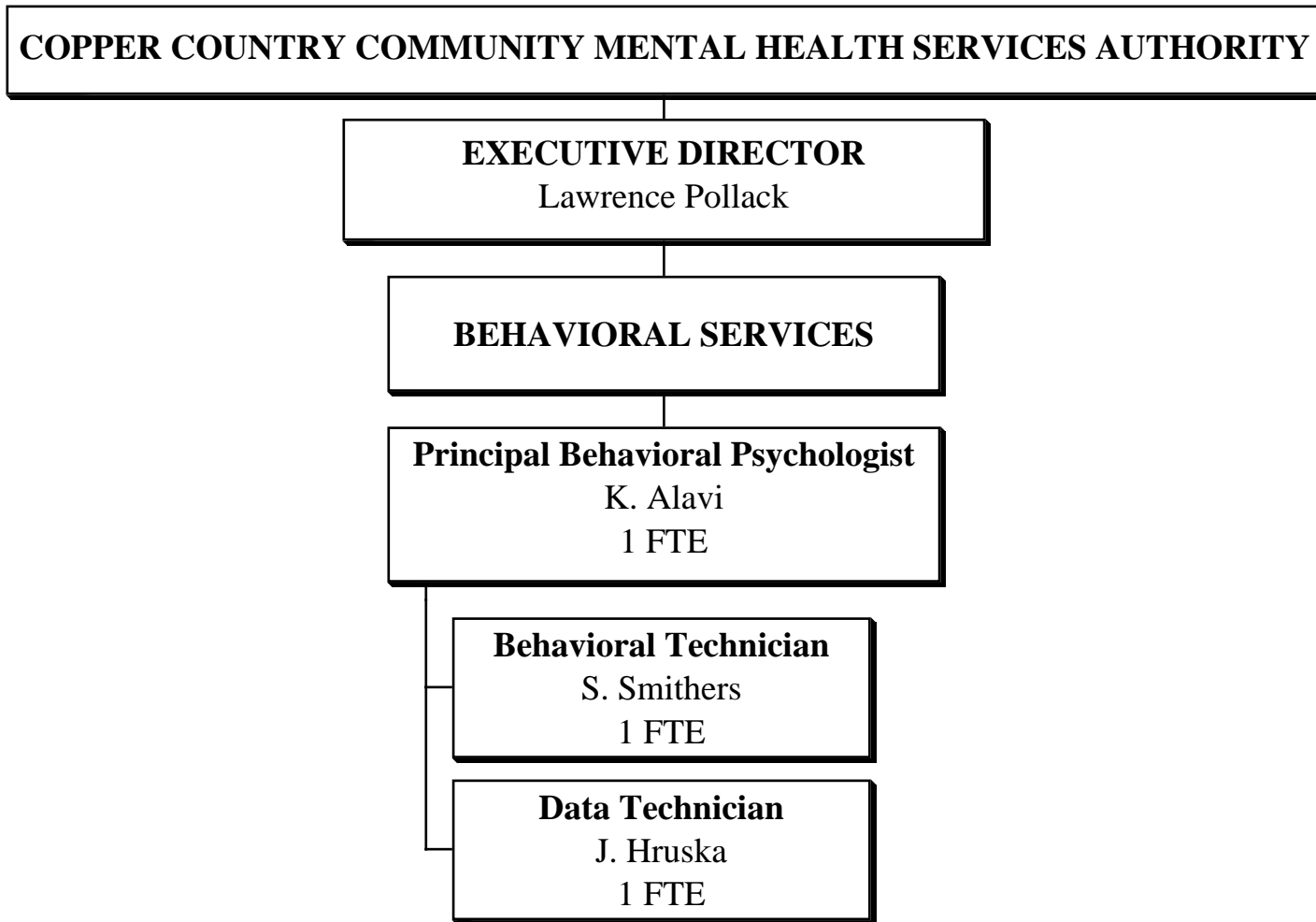


# CCCMHSA ORGANIZATIONAL CHART - OCTOBER, 2011

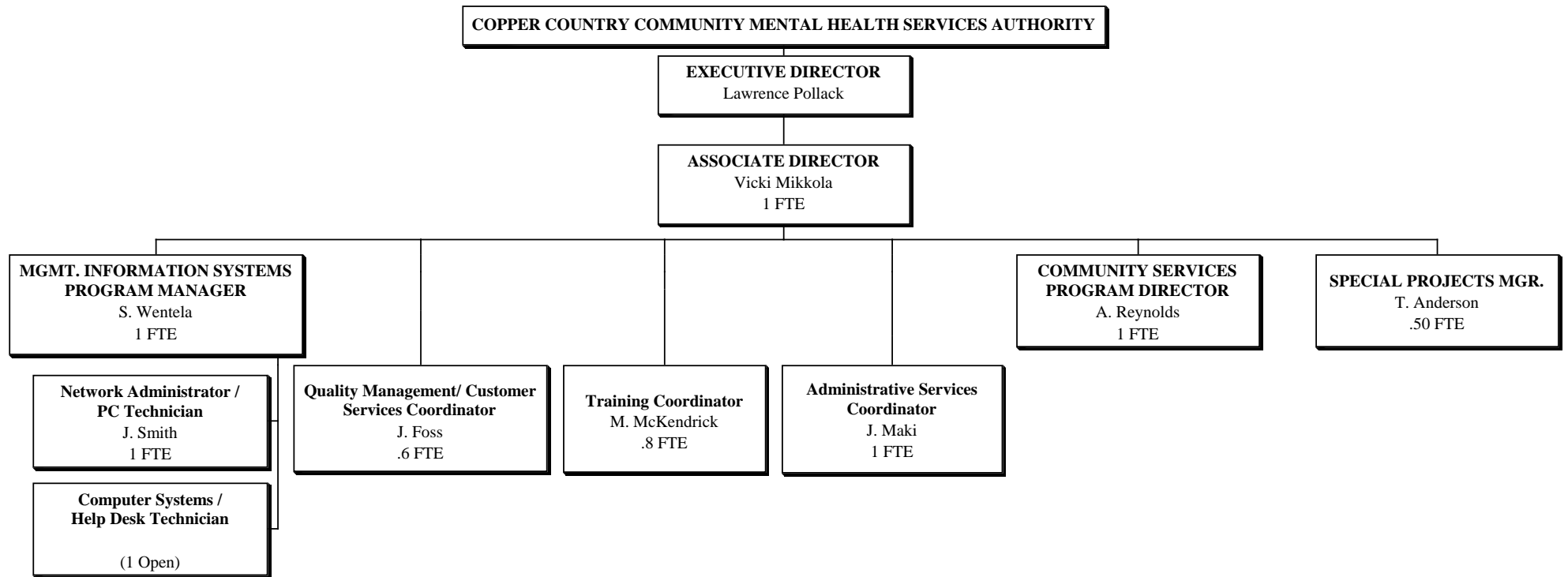
## MANAGEMENT STRUCTURE



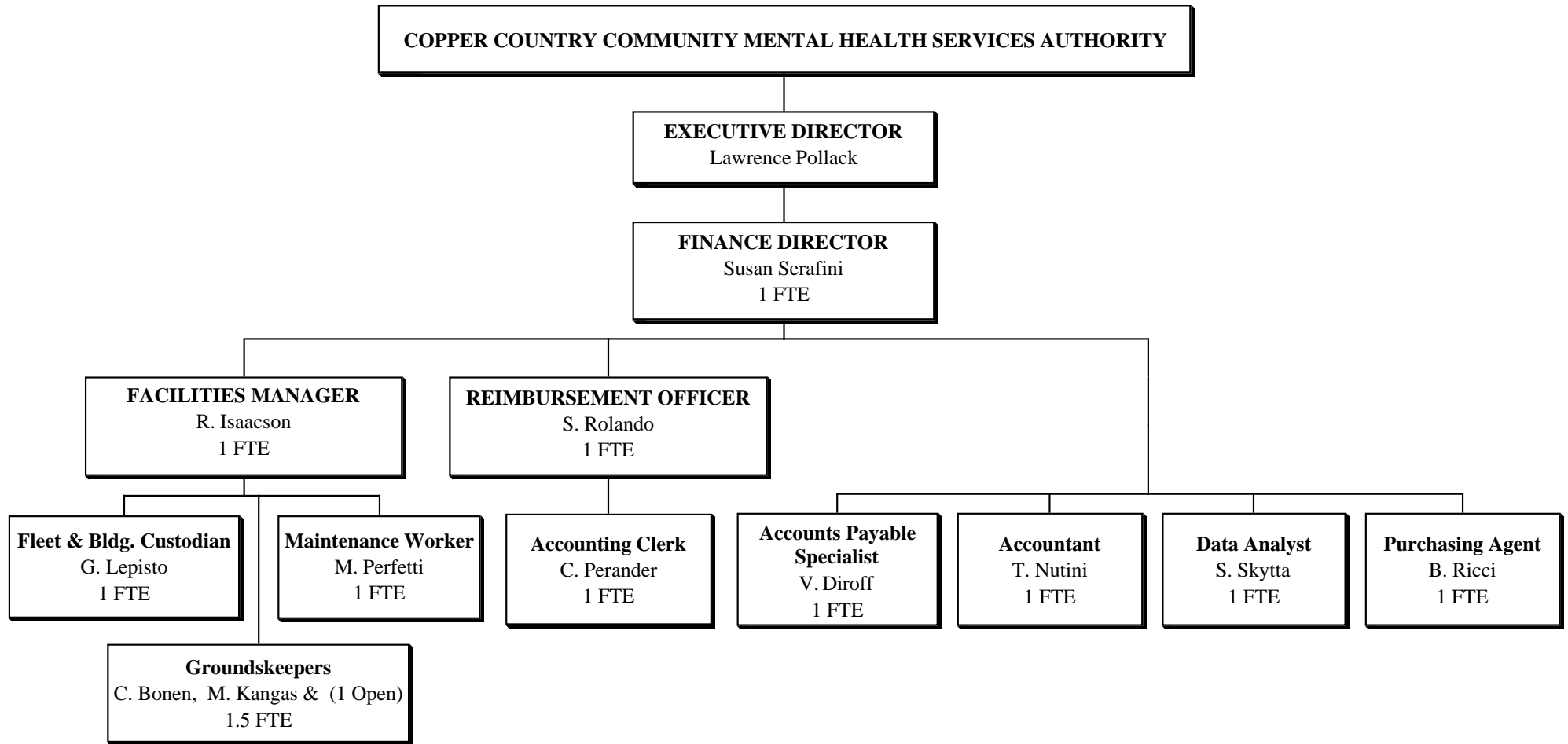
**CCCMHSA ORGANIZATIONAL CHART - OCTOBER, 2011**  
**BEHAVIORAL SERVICES**



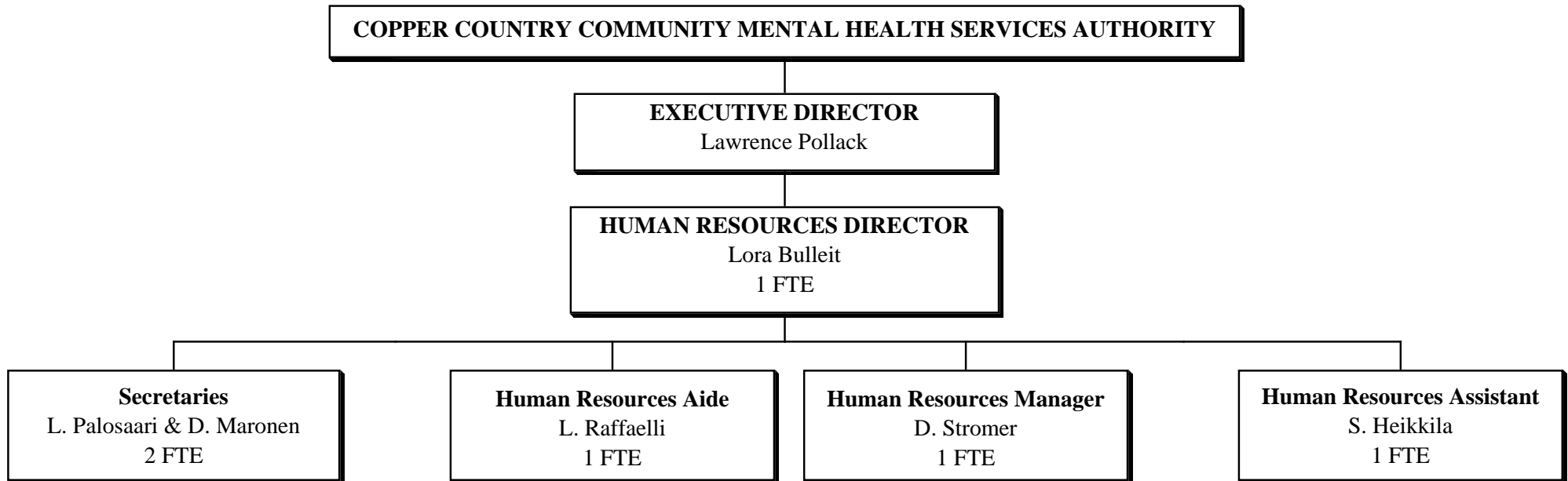
**CCCMHSA ORGANIZATIONAL CHART - OCTOBER, 2011**  
**TRAINING, QUALITY IMPROVEMENT / POLICY DEVELOPMENT /**  
**CUSTOMER SERVICES / MANAGEMENT INFORMATION SERVICES**



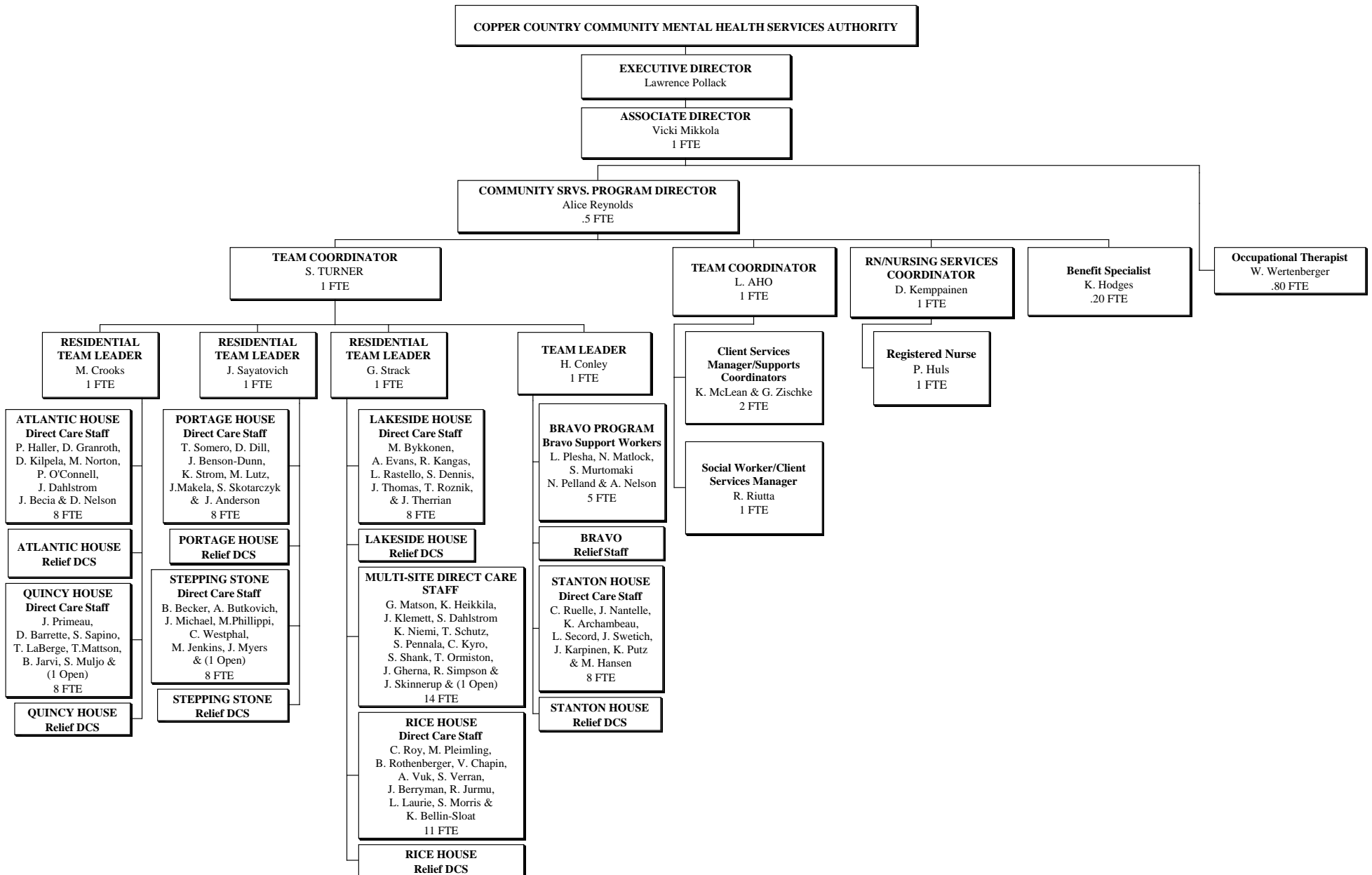
**CCCMHSA ORGANIZATIONAL CHART - OCTOBER, 2011**  
**FINANCIAL ADMINISTRATION / MAINTENANCE**



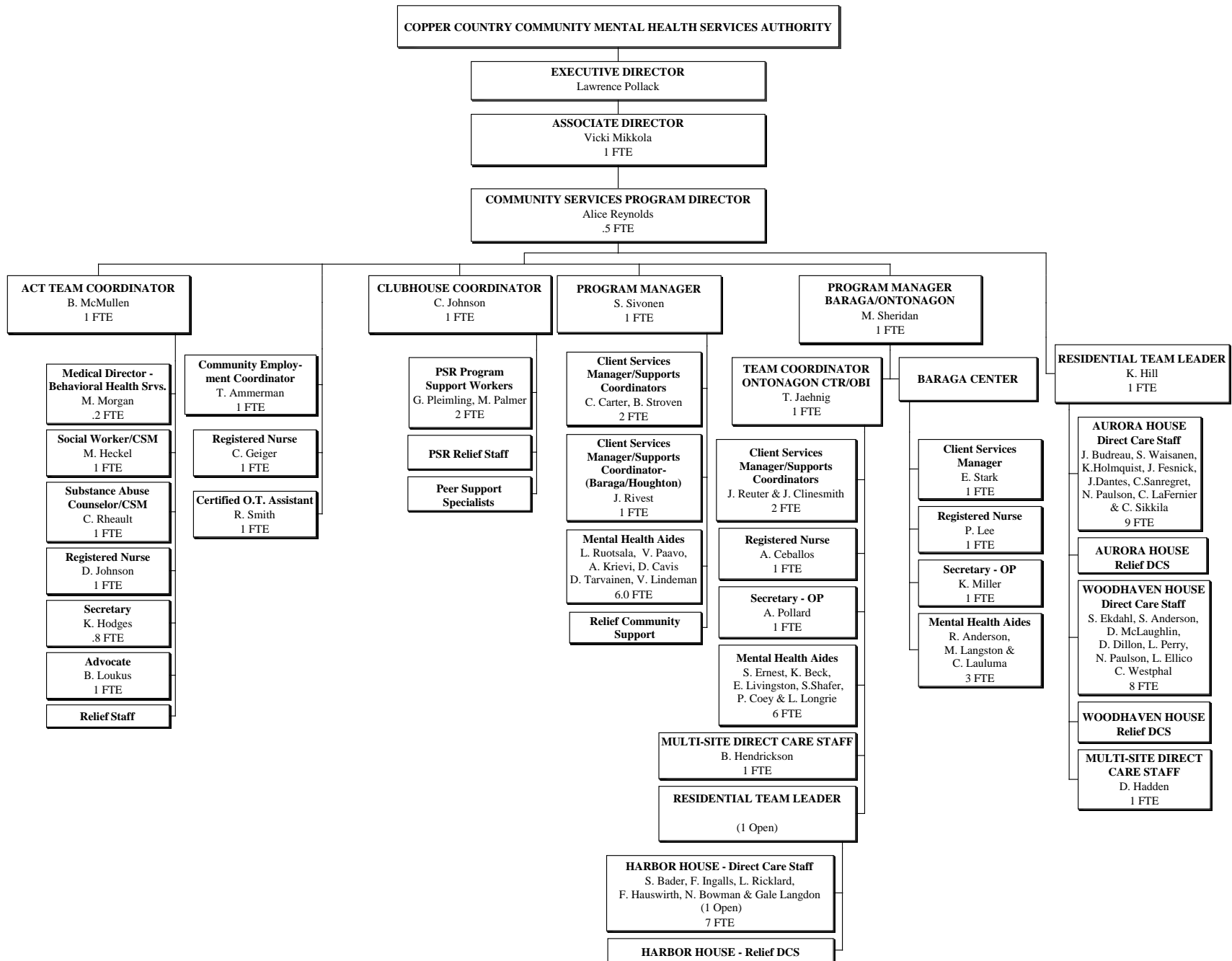
**CCCMHSA ORGANIZATIONAL CHART - OCTOBER, 2011**  
**ADMINISTRATIVE SERVICES**



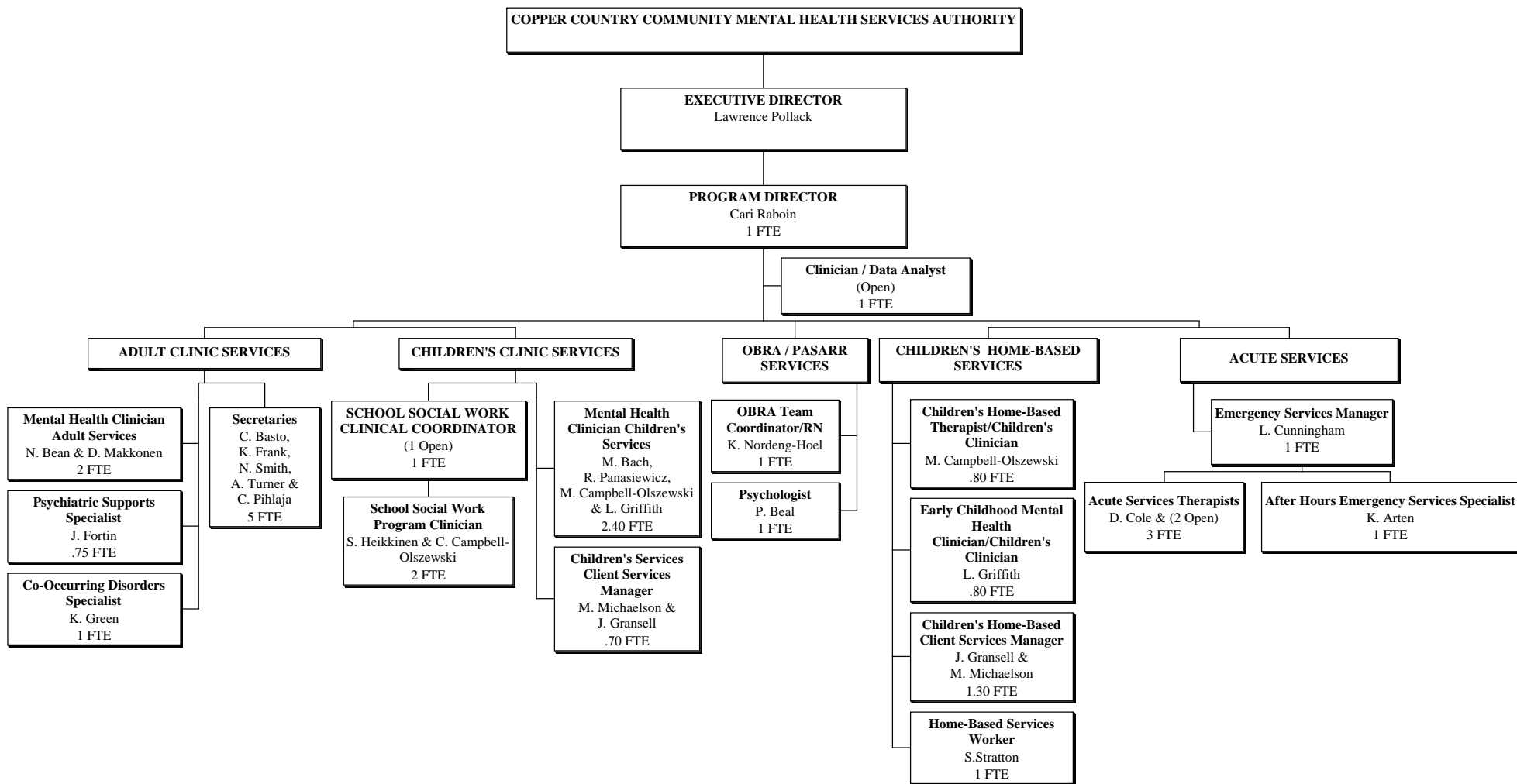
**CCCMHSA ORGANIZATIONAL CHART - OCTOBER, 2011  
COMMUNITY SERVICES**



**CCCMHSA ORGANIZATIONAL CHART - OCTOBER, 2011  
COMMUNITY SERVICES**

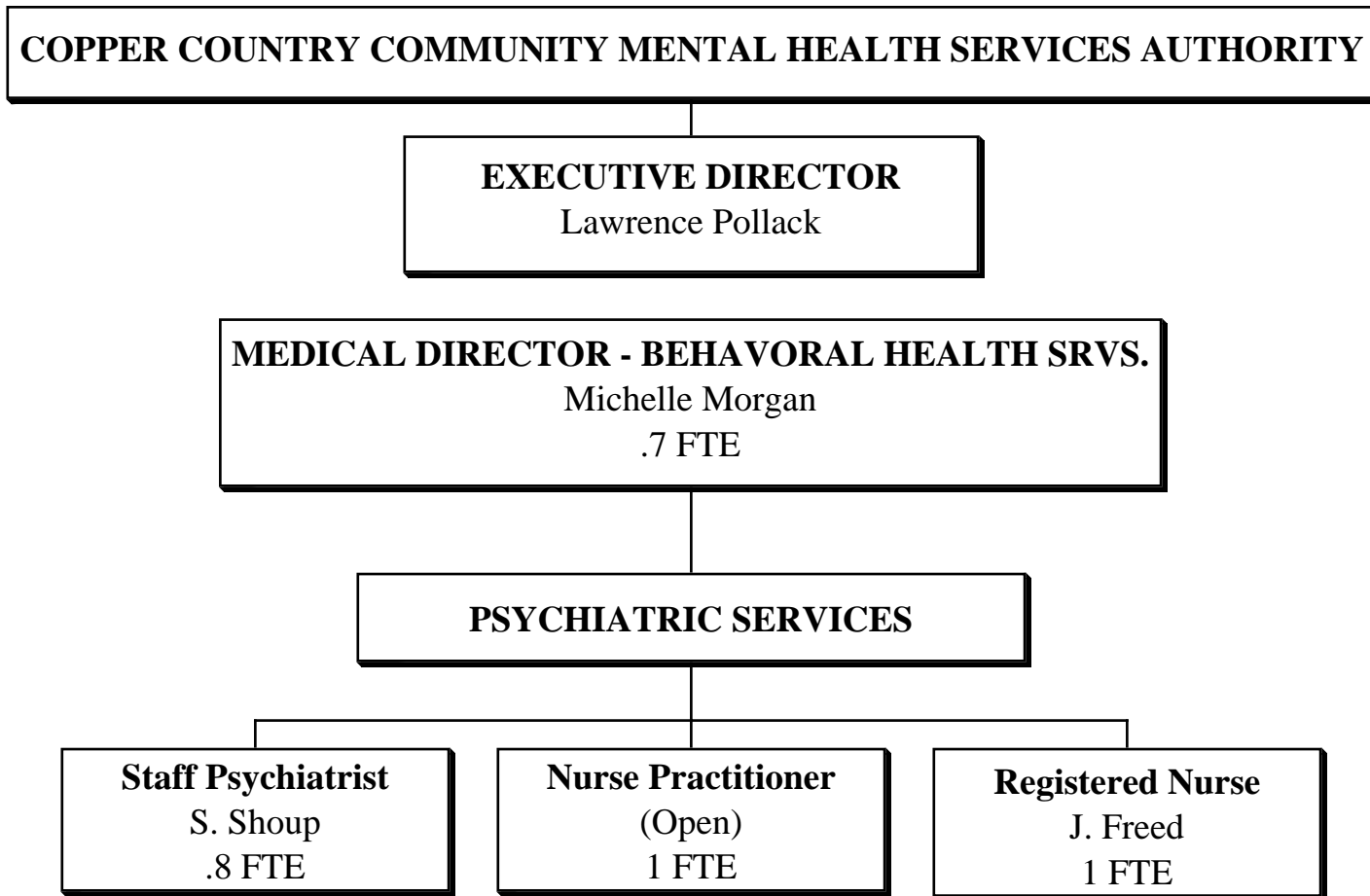


**CCCMHSA ORGANIZATIONAL CHART - OCTOBER, 2011**  
**CLINIC & OBRA/PASARR SERVICES**



**CCCMHSA ORGANIZATIONAL CHART - OCTOBER,  
2011**

**PSYCHIATRIC / ACUTE SERVICES**



**CCCMHSA ORGANIZATIONAL CHART - OCTOBER, 2011**  
**THE INSTITUTE**

